

PARTS BOOK

HDB9230

LOADMASTER 2X

Part #94046

Rev. #02

HSMFG021025

Starting Ser. # 521HDB3007

TABLE OF CONTENTS

FIGURE #	CONTENTS	PAGE #
*	INSTRUCTIONS FOR ORDERING PARTS	1
1	HITCH MOUNT AND JACK ARM COMPONENTS	2-3
2	HOSE HOLDER AND COMPONENTS	4-5
3	POLE HOSE HOLDER AND COMPONENTS	6-7
4	FRONT POLE AND COMPONENTS	8-9
5	SUITCASE WEIGHTS AND COMPONENTS	10-11
6	FRONT HOPPER AND COMPONENTS	12-13
7	REAR HOPPER AND COMPONENTS	14-15
8	FRONT HOPPER PANELS AND COMPONENTS	16-17
9	REAR HOPPER PANELS AND COMPONENTS	18-19
10	ELEVATOR AND COMPONENTS	20-21
11	GREASE LINES AND COMPONENTS	22-23
12	HYDRAULICS AND COMPONENTS	24-27
13	HYDRAULICS AND COMPONENTS	28-29
14	HYDRAULICS AND COMPONENTS	30-31
15	LIGHTS	32-33
16	ELECTRICAL	34-35
17	OPTIONAL HDBODE36	36-39
	DUMPING EXTENSION FOR UNLOADING INTO A 36' SEMI	
18	OPTIONAL HDBODE40	40-43
	DUMPING EXTENSION FOR UNLOADING INTO A 40' SEMI	
19	OPTIONAL HTCHB4 - CATEGORY 4 BULLNOSE HITCH	44-45
20	OPTIONAL HTCHB5 - CATEGORY 5 BULLNOSE HITCH	46-47
*	TRACK SYSTEM	48-71
1	TRACK AND UNDERCARRIAGE	50-51
2	FRAME ASSEMBLY	52-53
3	TENSION LINK ASSEMBLY	54-55
4	TENSIONER ASSEMBLY	56-57
5	ALIGNMENT ASSEMBLY	58-59
6	BOGIE ASSEMBLY - MID ROLLER	60-61
7	CARRIER ASSEMBLY	62-63
8	HUB - IDLER	64-65
9	HUB - MID ROLLER	66-67
10	STRAIGHT PINS - FITMENT KIT	68-69
11	STABILIZER ASSEMBLY	70-71
12	HDBO2XTA HEAVY TANDEM OPTION	72-73
13	TWP75010S (4) 750/60 X 30.5 TIRE/RIMS OPTION	74
14	TRACKS FOR 9230 LOADMASTER 2X OPTION	75

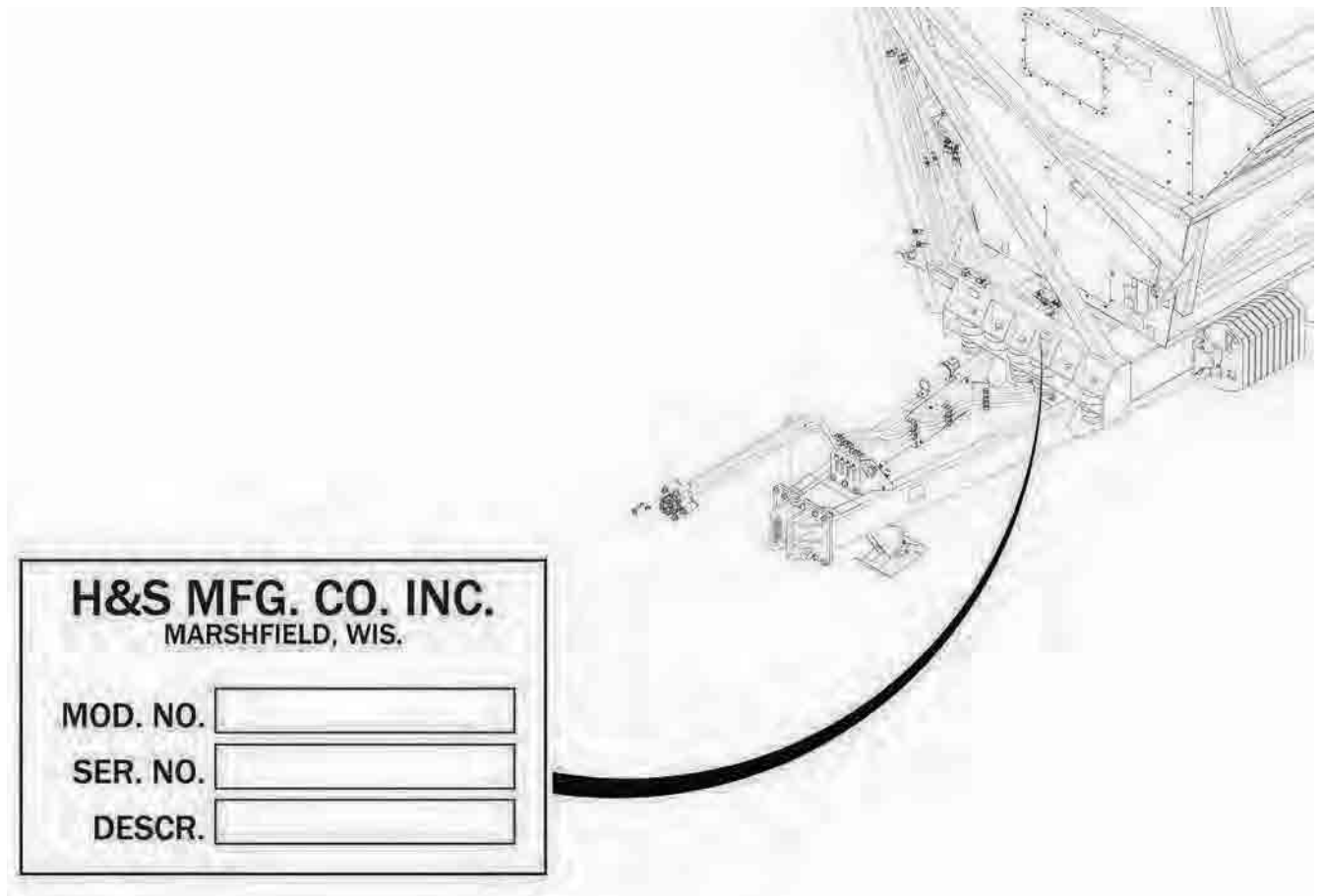
INSTRUCTIONS FOR ORDERING PARTS

All service parts should be ordered through your authorized H&S dealer. Your Dealership will be able to give you faster service if you will provide them with the following:

1. All references to left or right apply to the machine as viewed from the rear.
2. Parts should not be ordered from illustration only. Please order complete part number.
3. If your dealer has to order parts - give shipping instructions:

VIA truck - large pieces (please specify local truck lines)

VIA United Parcel Service (include full address)



PLEASE RECORD NUMBERS FOR YOUR UNIT FOR QUICK REFERENCE

H&S IS CONTINUALLY STRIVING TO IMPROVE ITS PRODUCTS

We must, therefore, reserve the right to make improvements or changes whenever it becomes practical to do so, without incurring any obligation to make changes or additions to the equipment previously sold.

FIGURE 1

HITCH MOUNT & JACK ARM COMPONENTS

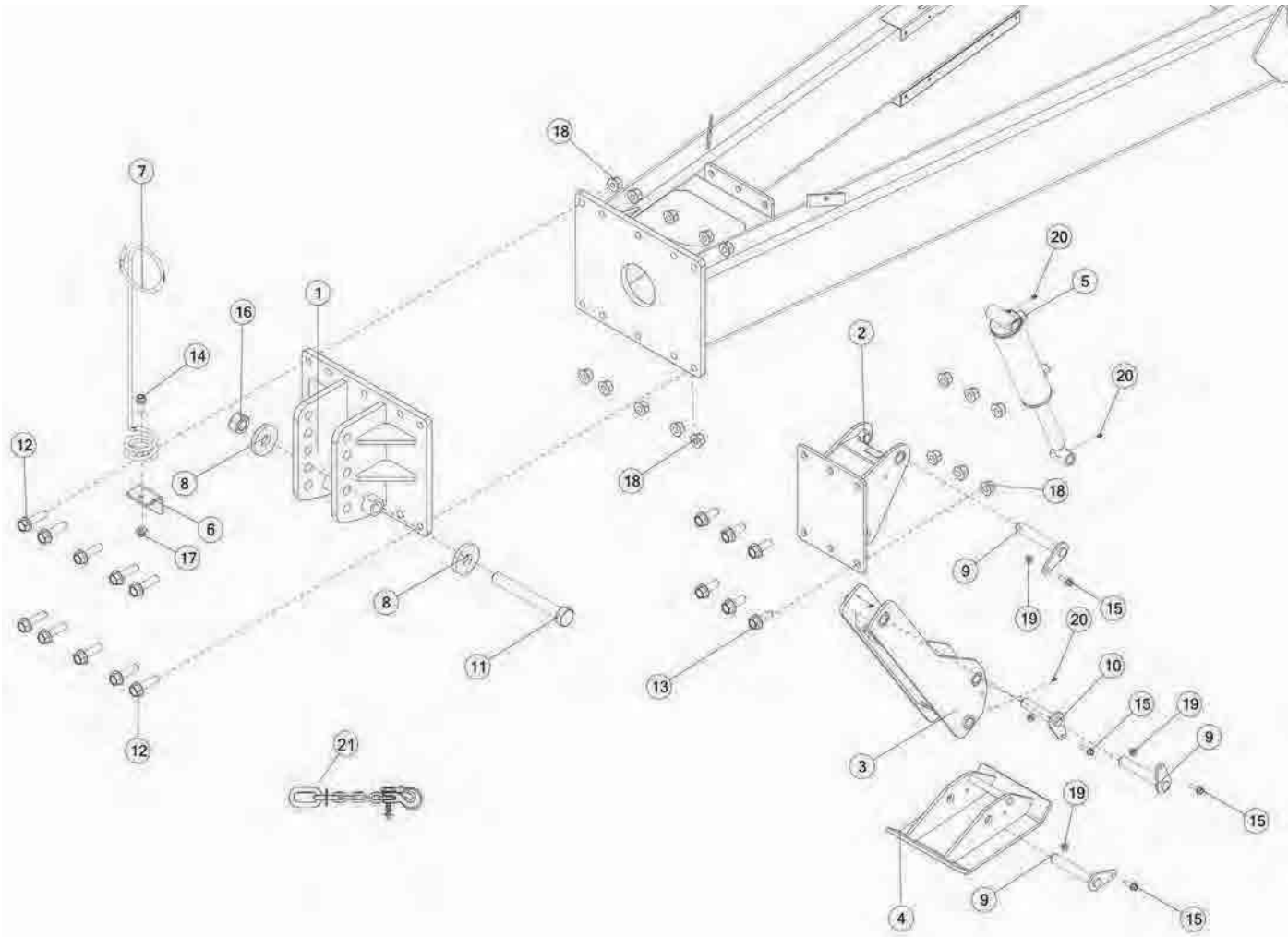


FIGURE 1

HITCH MOUNT & JACK ARM COMPONENTS

REF #	PART #	DESCRIPTION	QTY
1	92487	HITCH MOUNT	1
2	92454	JACK BASE	1
3	92450	JACK ARM	1
4	92456	JACK FOOT	1
5	92420	CYLINDER, 3 X 6	1
*	94015	SEAL KIT	1
6	94003	HOSE HOLDER TAB	1
7	94001	HOSE HOLDER	1
8	88825	WASHER, FLAT, 1-1/4	2
9	92609	JACK PIN	3
10	92610	JACK PIN SHORT	1
11	YBHH40110	BOLT HEX, 1-1/4 X 11, G5	1
12	YBFB24010	BOLT FLANGE, 3/4-10 X 2-3/4 G8 YZ	10
13	YBFB24200	BOLT FLANGE, 3/4 X 2.00 G5	6
14	YBFB16150	BOLT FLANGE, 1/2 X 1-1/2 G5	1
15	YBFB12125	BOLT FLANGE, 3/8 X 1-1/4 G5	4
16	YNHX36010	NUT HEX, 1-1/4-7 NA A ZC	1
17	YNFG16003	NUT FLANGE, 1/2 GF	1
18	YNFG24006	NUT FLANGE, 3/4-10 LKTL G ZC	16
19	YNFG12006	NUT FLANGE, 3/8 GF	4
20	G89	STRAIGHT ZERK, 1/4-28	3
21	SC60000	SAFETY CHAIN, 60,000 LB RATING	2
*	98758	HYDRAULIC JACK COMPLETE	1

FIGURE 2

HOSE HOLDER & COMPONENTS

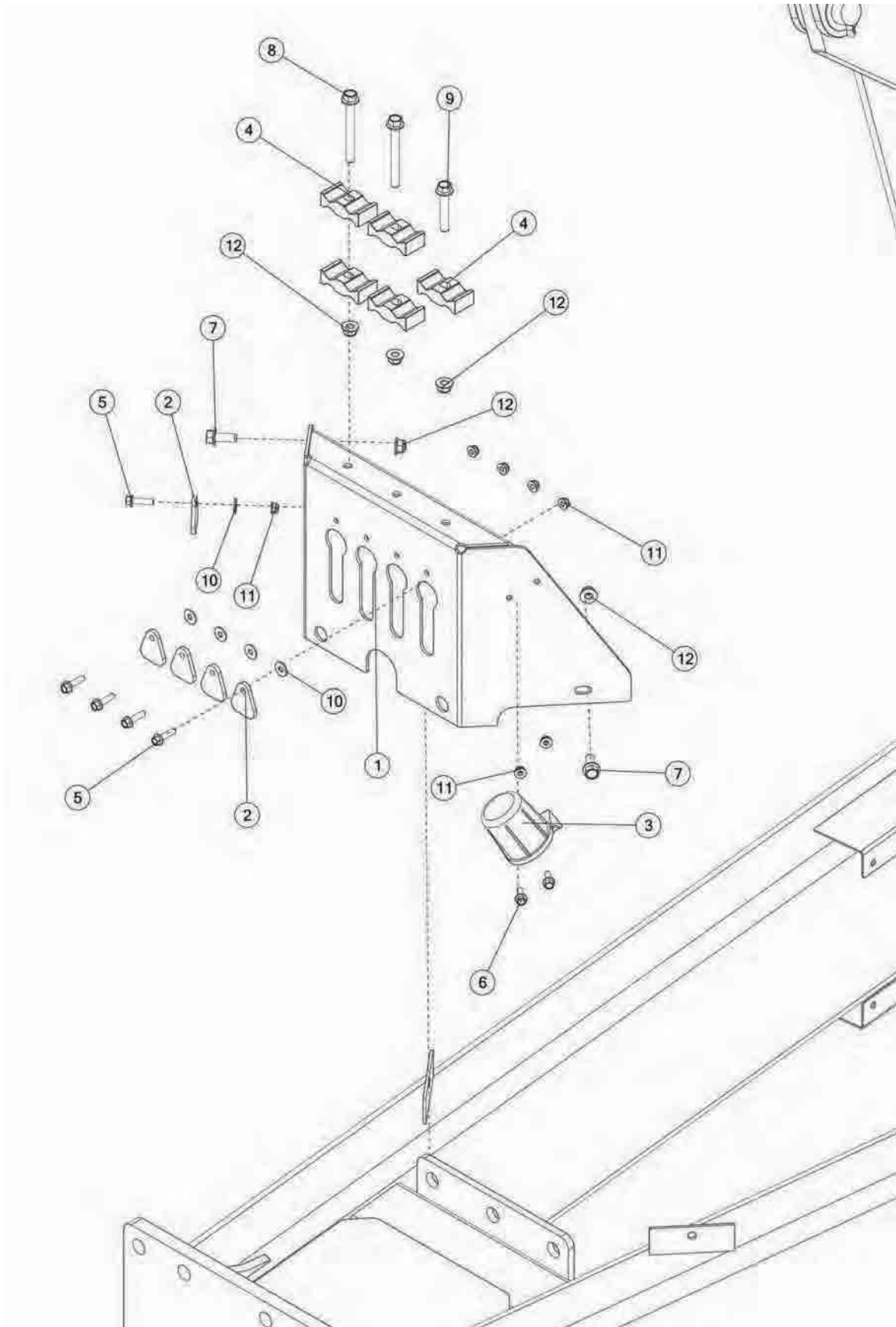


FIGURE 2

HOSE HOLDER & COMPONENTS

REF #	PART #	DESCRIPTION	QTY
1	92561	HOSE HOLDER	1
2	77200	PLATE, 1.75 X 1.5 X 0.19	5
3	CHM38	PLUG STORAGE	1
4	86567	DOUBLE CLAMP, UNIVERSAL	5
5	YBFB08100	BOLT FLANGE, 1/4 X 1 G5	5
6	YBFB08075	BOLT FLANGE, 1/4 X 3/4 G5	2
7	YBFB12003	BOLT FLANGE, 3/8 X 1 G5	2
8	YBFB12350	BOLT FLANGE, 3/8 X 3-1/2 G5	2
9	YBFB12225	BOLT FLANGE, 3/8 X 2-1/4 G5	1
10	YWFL08005	WASHER, FLAT, 1/4 USS	5
11	YNFG08010	NUT FLANGE, 1/4 GF	7
12	YNFG12006	NUT FLANGE, 3/8 GF	5

FIGURE 3

POLE HOSE HOLDER & COMPONENTS

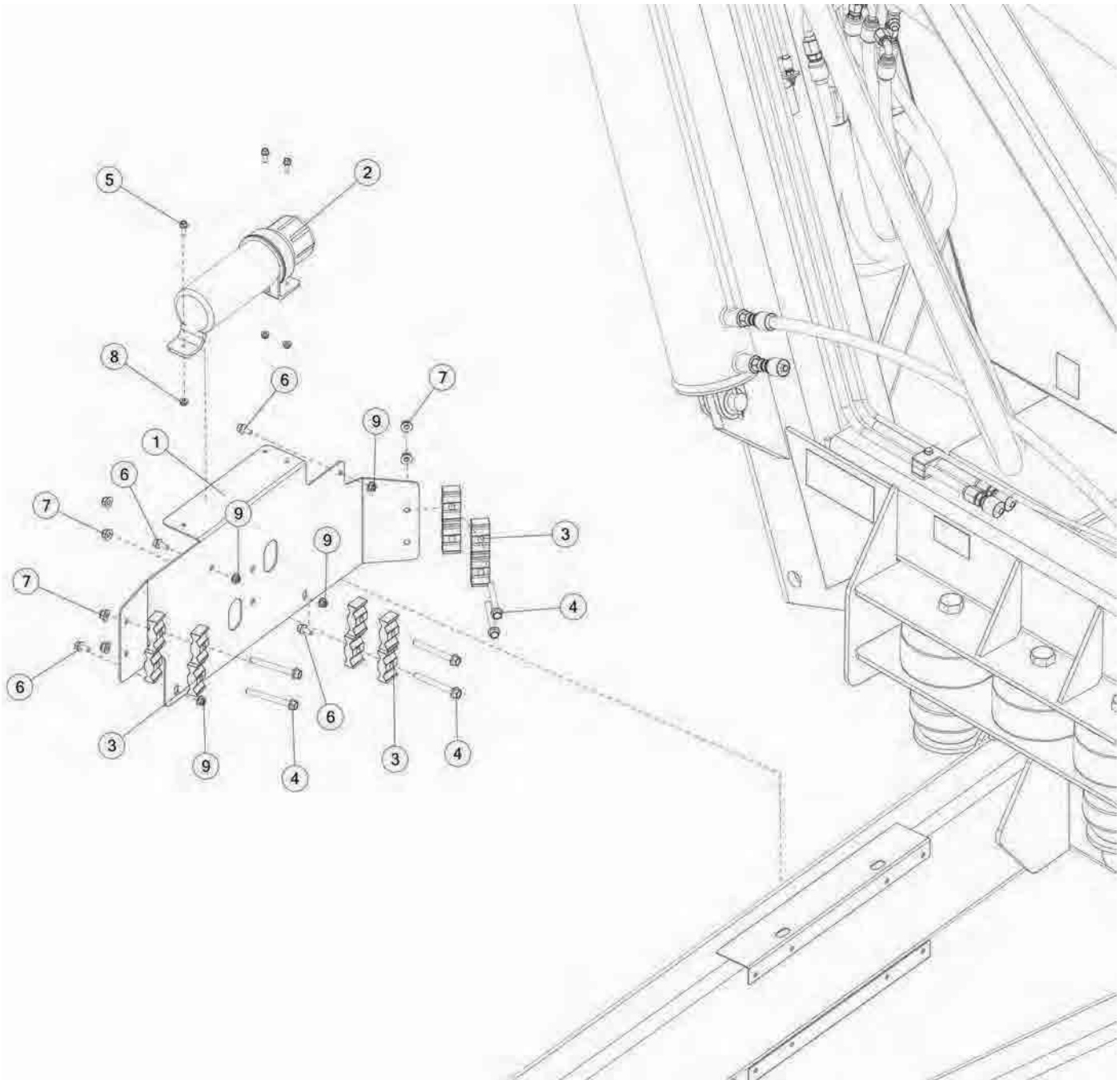


FIGURE 3

POLE HOSE HOLDER & COMPONENTS

REF #	PART #	DESCRIPTION	QTY
1	92556	POLE HOSE HOLDER	1
2	85453	MANUAL HOLDER	1
3	86567	DOUBLE CLAMP, UNIVERSAL	12
4	YBFB12350	BOLT FLANGE, 3/8 X 3-1/2 G5	6
5	YBFB08075	BOLT FLANGE, 1/4 X 3/4 G5	3
6	YBFB10075	BOLT FLANGE, 5/16 X 3/4 G5	4
7	YNFG12006	NUT FLANGE, 3/8 GF	6
8	YNFG08010	NUT FLANGE, 1/4 GF	3
9	YNFG10005	NUT FLANGE, 5/16 GF	4

FIGURE 4

FRONT POLE & COMPONENTS

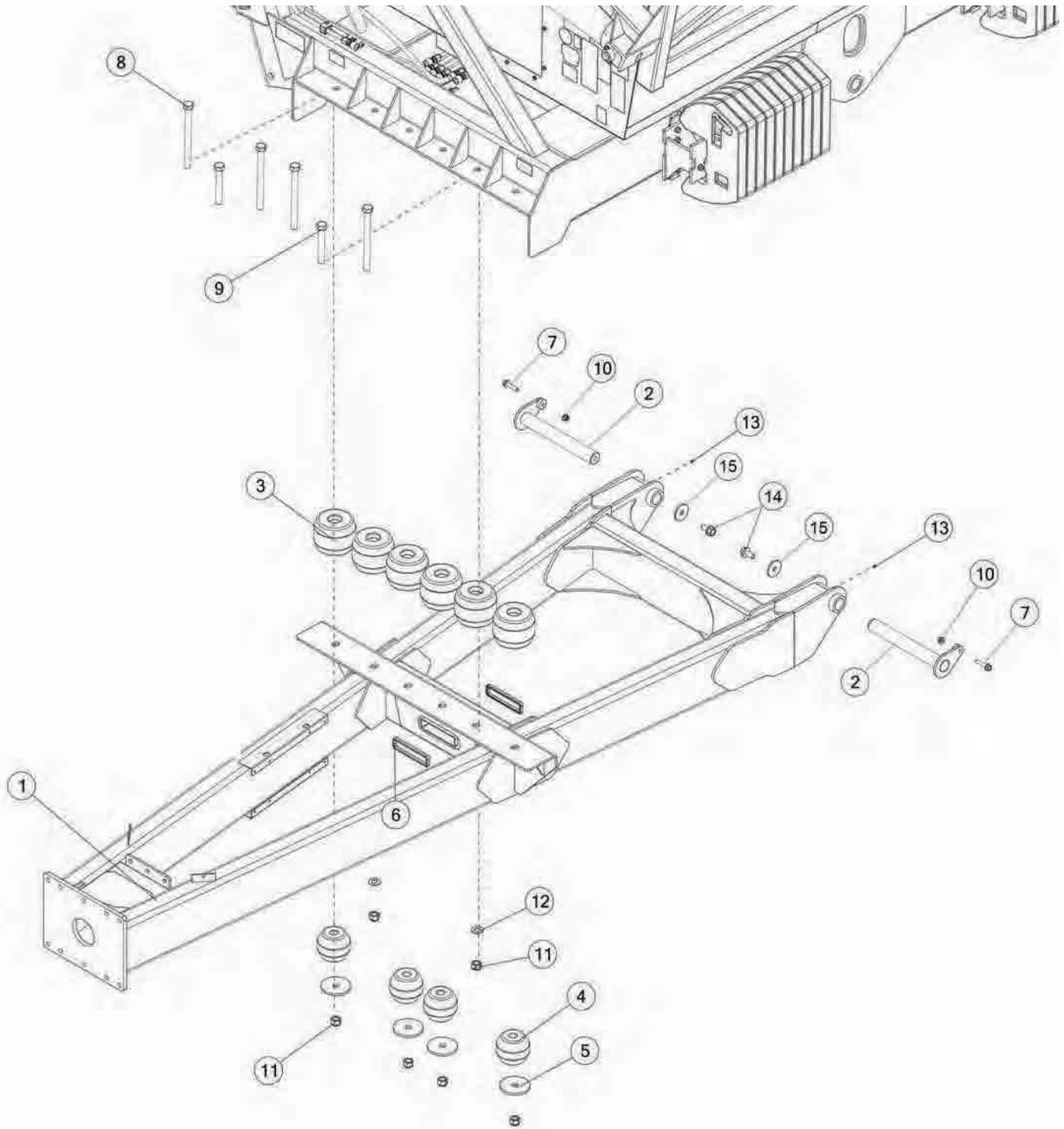


FIGURE 4

FRONT POLE & COMPONENTS

REF #	PART #	DESCRIPTION	QTY
1	92385B	POLE	1
2	98725	POLE PIN	2
3	94309	RUBBER SPRING	6
4	91058	RUBBER SPRING	4
5	91153	WASHER, FLAT, 1	4
6	94017	EDGING, 2 X 8	2
7	YBFB16225	BOLT FLANGE, 1/2 X 2-1/4 G5	2
8	YBHH32120	BOLT HEX, 1-8 X 12 G5 ZC	4
9	YBHH32030	BOLT HEX, 1-8 X 7 G5	2
10	YNFG16003	NUT FLANGE, 1/2 GF	2
11	YNNY32005	NUT HEX, 1-8 LKNY G2 ZC	6
12	YWFL32005	WASHER, FLAT, SAE 1 ZC	2
13	G89	STRAIGHT ZERK, 1/4-28	2
14	YBFB24150	BOLT FLANGE, 3/4 X 1-1/2 G5	2
15	82233	WASHER	2

FIGURE 5
SUITCASE WEIGHTS & COMPONENTS

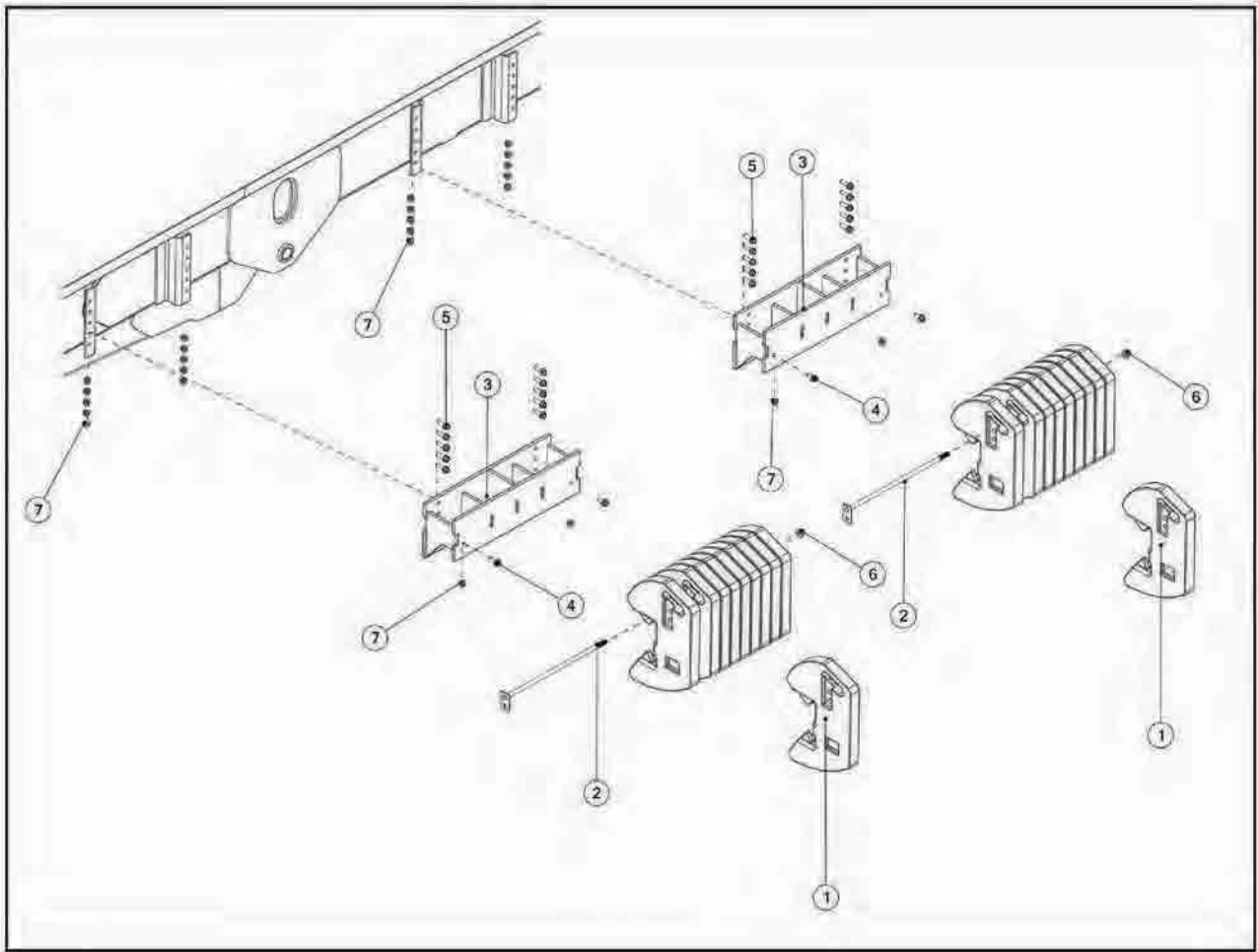
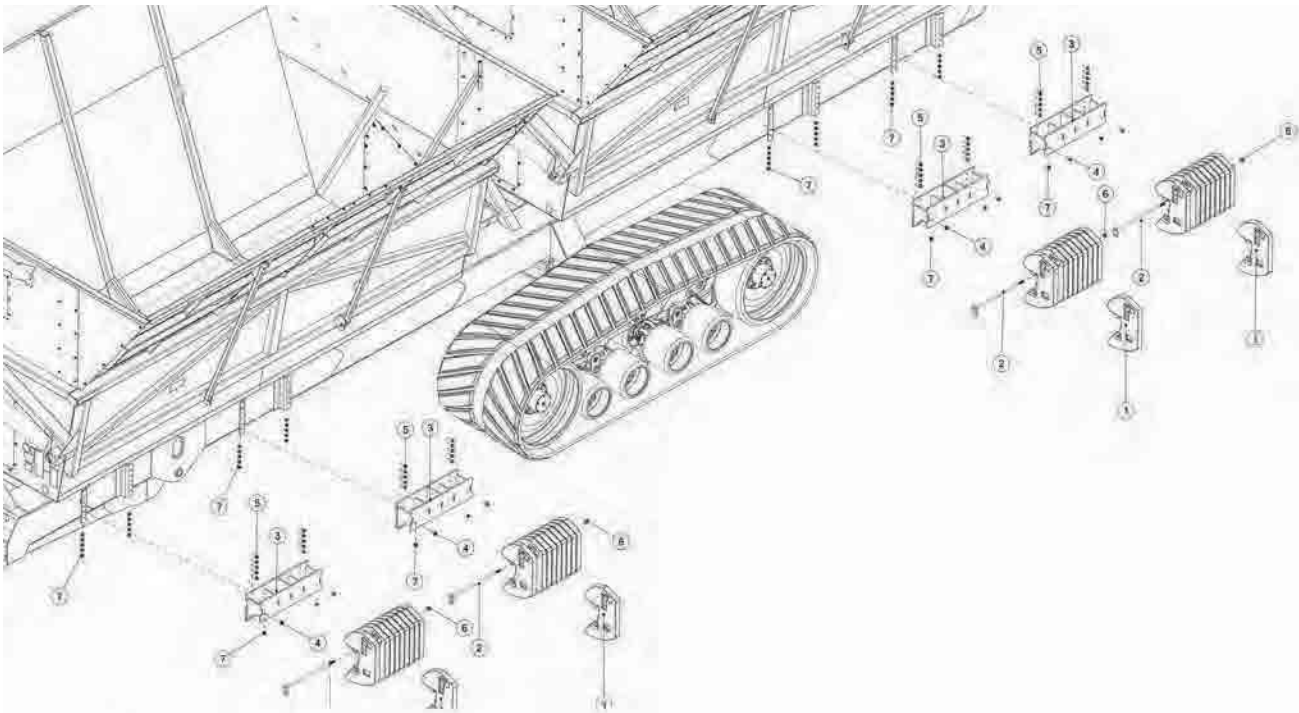


FIGURE 5

SUITCASE WEIGHTS & COMPONENTS

REF #	PART #	DESCRIPTION	QTY
1	90172	SUITCASE WEIGHT, 100 LB	40
2	90659	SUITCASE WEIGHT ROD	4
3	90174	SUITCASE WEIGHT BRACKET	4
4	YBFB16125	BOLT FLANGE, 1/2 X 1-1/4 G5	8
5	YBFB16175	BOLT FLANGE, 1/2 X 1-3/4 G5	40
6	YNFG20005	NUT FLANGE, 5/8-11 LKTL F ZC	4
7	YNFG16003	NUT FLANGE, 1/2 GF	48

FIGURE 6
FRONT HOPPER & COMPONENTS

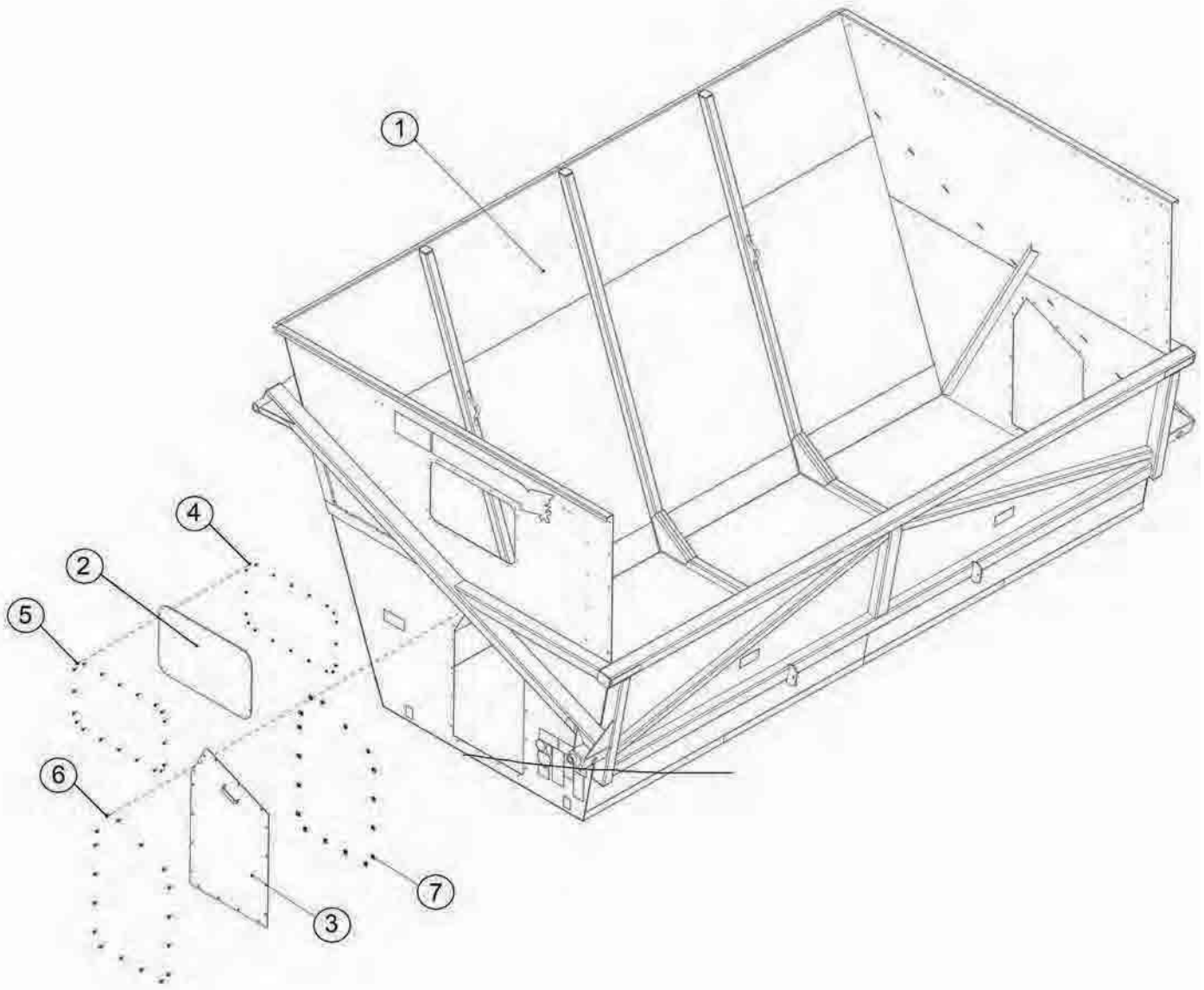


FIGURE 6

FRONT HOPPER & COMPONENTS

REF #	PART #	DESCRIPTION	QTY
1	88536B	HI DUMP HOPPER	1
2	55839	WINDOW WITH HOLES	1
3	90012	FRONT ACCESS PANEL	1
4	YNFG08010	NUT FLANGE, 1/4 GF	20
5	YBFB08075	BOLT FLANGE, 1/4 X 3/4 G5	20
6	YBFB10075	BOLT FLANGE, 5/16 X 3/4 G5	17
7	84124	U NUT, 5/16-18, .15 X .562	17

FIGURE 7

REAR HOPPER & COMPONENTS

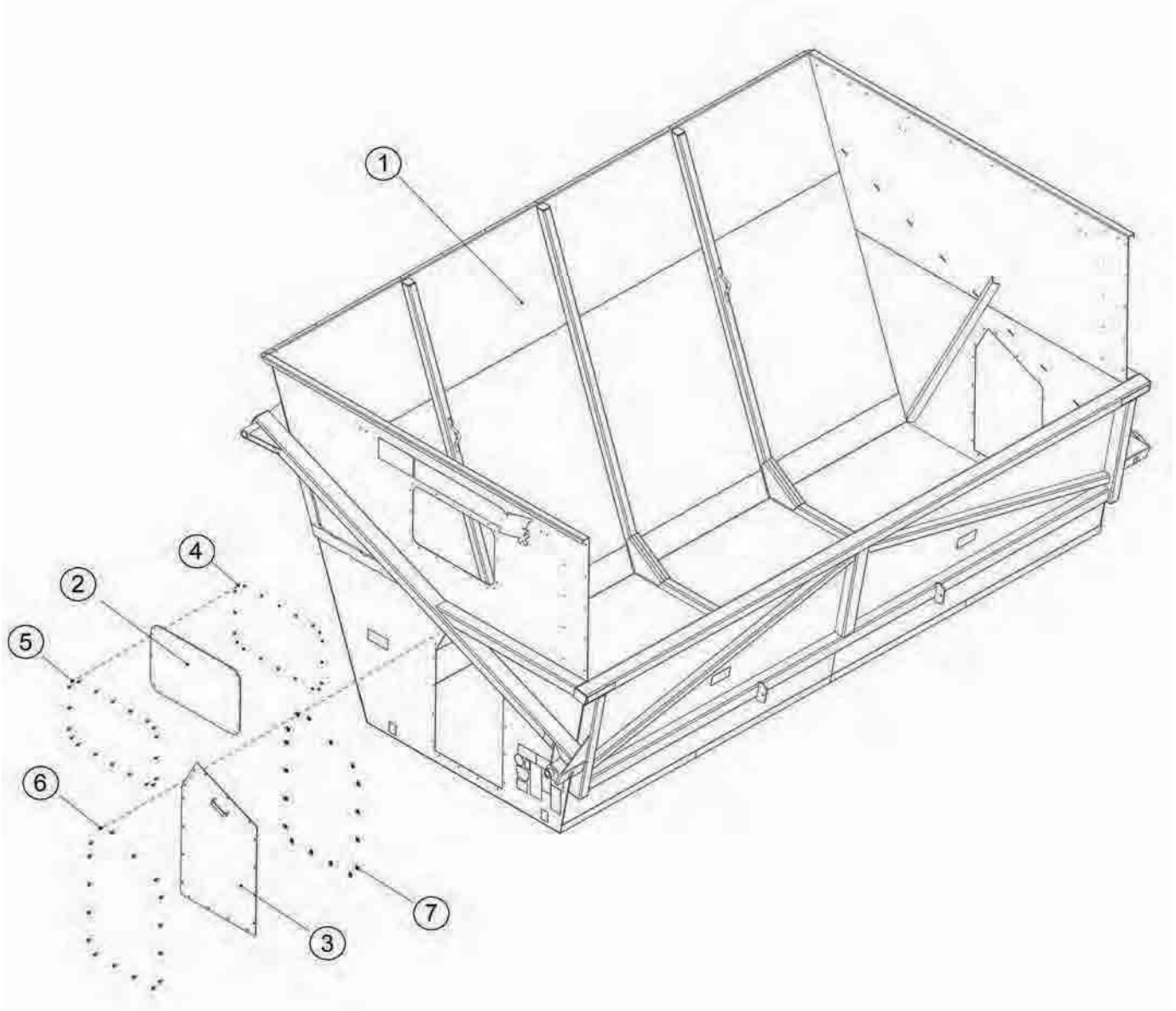


FIGURE 7

REAR HOPPER & COMPONENTS

REF #	PART #	DESCRIPTION	QTY
1	88536B	HI DUMP HOPPER	1
2	92645	WINDOW COVER	1
3	90012	FRONT ACCESS PANEL	1
4	YNFG08010	NUT FLANGE, 1/4 GF	20
5	YBFB08075	BOLT FLANGE, 1/4 X 3/4 G5	20
6	YBFB10075	BOLT FLANGE, 5/16 X 3/4 G5	17
7	84124	U NUT, 5/16-18, .15 X .562	17

FIGURE 8

FRONT HOPPER PANELS & COMPONENTS

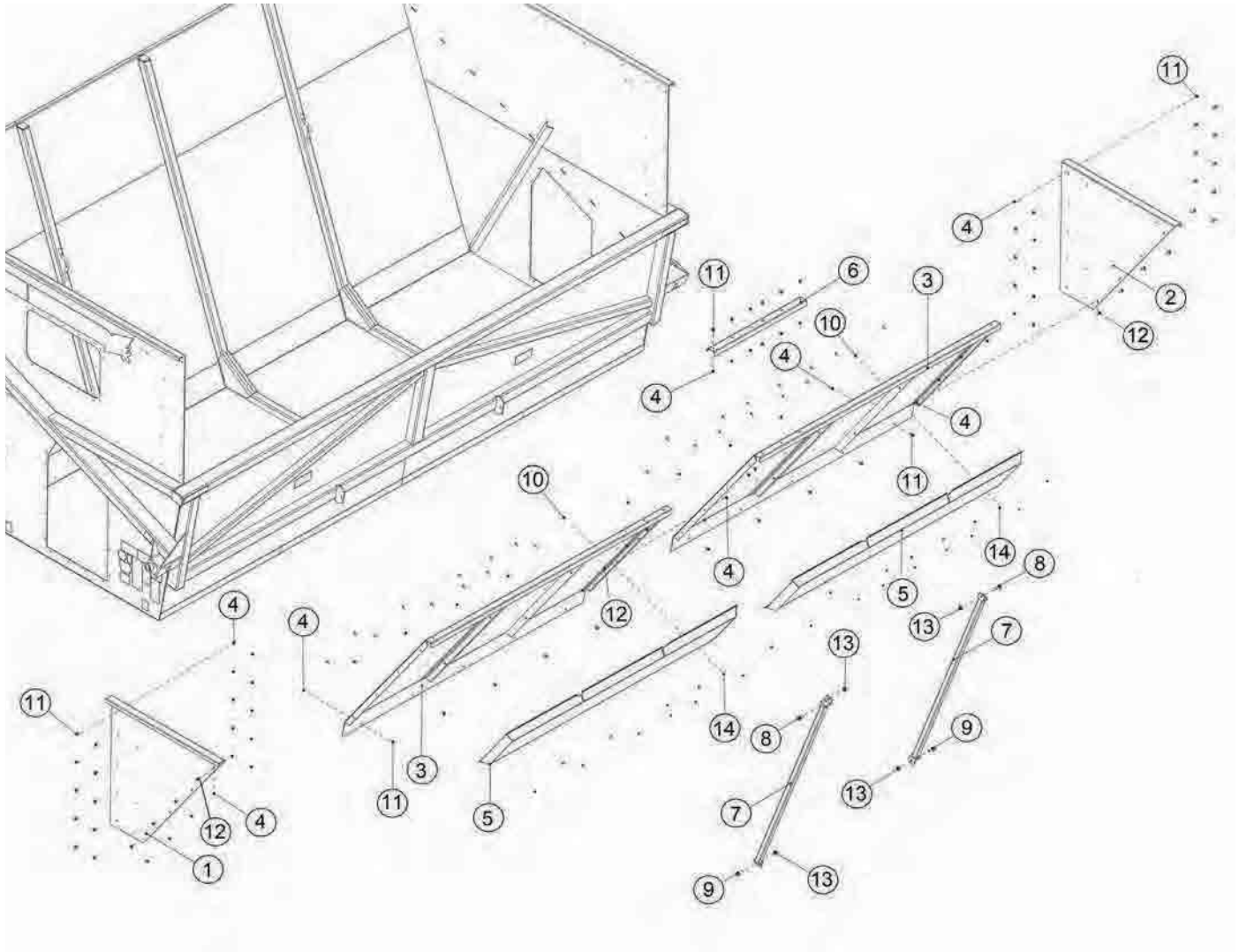


FIGURE 8

FRONT HOPPER PANELS & COMPONENTS

REF #	PART #	DESCRIPTION	QTY
1	88636	FRONT UPPER EXTENSION PANEL	1
2	88635	REAR UPPER EXTENSION PANEL	1
3	88640	HOPPER UPPER PANEL, NON DUMP SIDE	2
4	YNFG10005	NUT FLANGE, 5/16 GF	48
5	94299	BEAUTY PANEL	2
6	89825	BACKSTOP PANEL BRACE	1
7	88642	EXTENSION BRACE	2
8	YBFB16125	BOLT FLANGE, 1/2 X 1-1/4 G5	2
9	YBFB16150	BOLT FLANGE, 1/2 X 1-1/2 G5	2
10	YBCR08040	BOLT CARRIAGE, 1/4-20 X 3/4 G5 ZC	24
11	YBFB10075	BOLT FLANGE, 5/16 X 3/4 G5	36
12	YBFB10001	BOLT FLANGE, 5/16 X 1 G5	12
13	YNFG16003	NUT FLANGE, 1/2 GF	4
14	YNFG08010	NUT FLANGE, 1/4 GF	24

FIGURE 9

REAR HOPPER PANELS & COMPONENTS

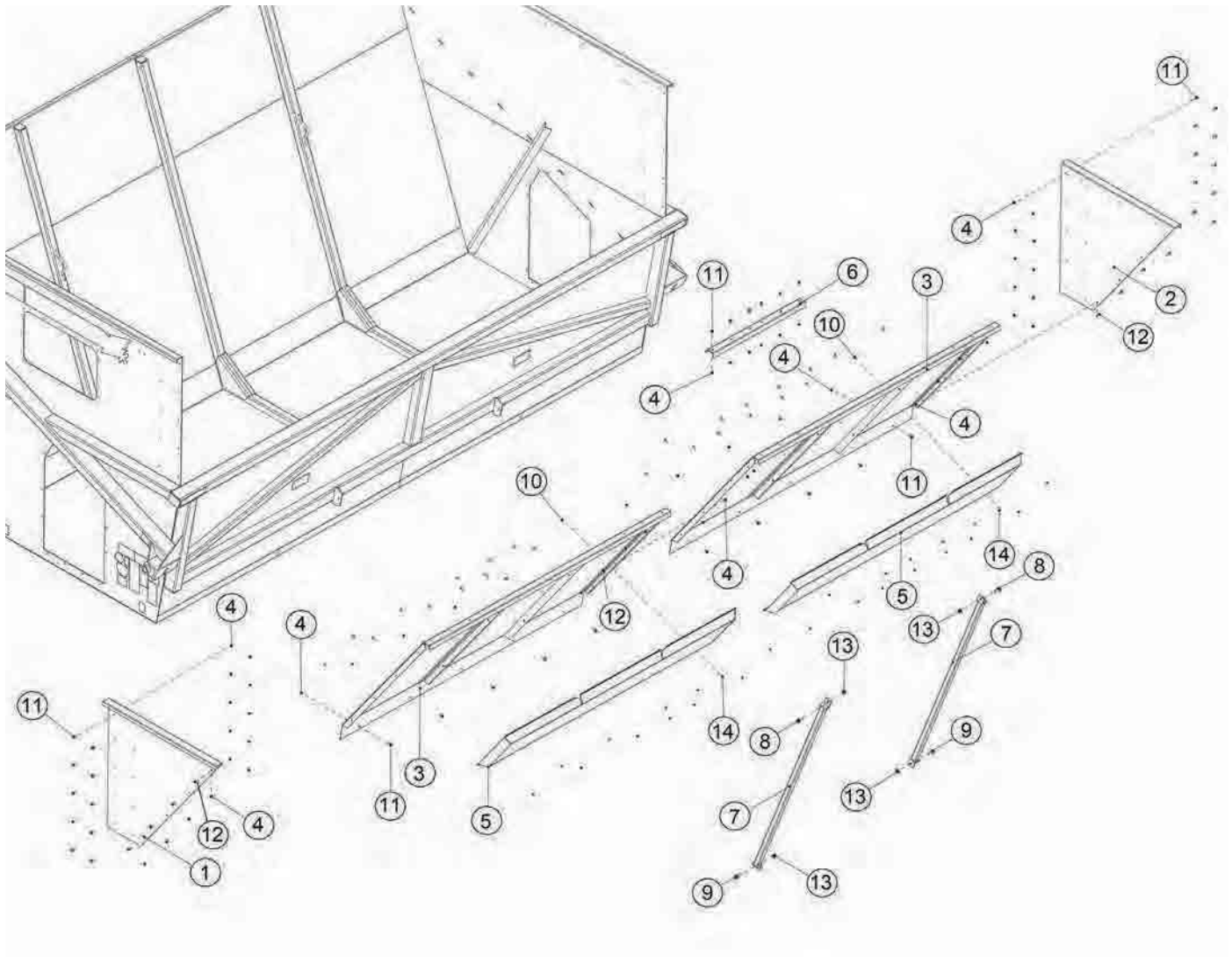


FIGURE 9

REAR HOPPER PANELS & COMPONENTS

REF #	PART #	DESCRIPTION	QTY
1	88636	FRONT UPPER EXTENSION PANEL	1
2	88635	REAR UPPER EXTENSION PANEL	1
3	88640	HOPPER UPPER PANEL, NON DUMP SIDE	2
4	YNFG10005	NUT FLANGE, 5/16 GF	48
5	94299	BEAUTY PANEL	2
6	89825	BACKSTOP PANEL BRACE	1
7	88642	EXTENSION BRACE	2
8	YBFB16125	BOLT FLANGE, 1/2 X 1-1/4 G5	2
9	YBFB16150	BOLT FLANGE, 1/2 X 1-1/2 G5	2
10	YBCR08040	BOLT CARRIAGE, 1/4-20 X 3/4 G5 ZC	24
11	YBFB10075	BOLT FLANGE, 5/16 X 3/4 G5	36
12	YBFB10001	BOLT FLANGE, 5/16 X 1 G5	12
13	YNFG16003	NUT FLANGE, 1/2 GF	4
14	YNFG08010	NUT FLANGE, 1/4 GF	24

FIGURE 10

ELEVATOR & COMPONENTS

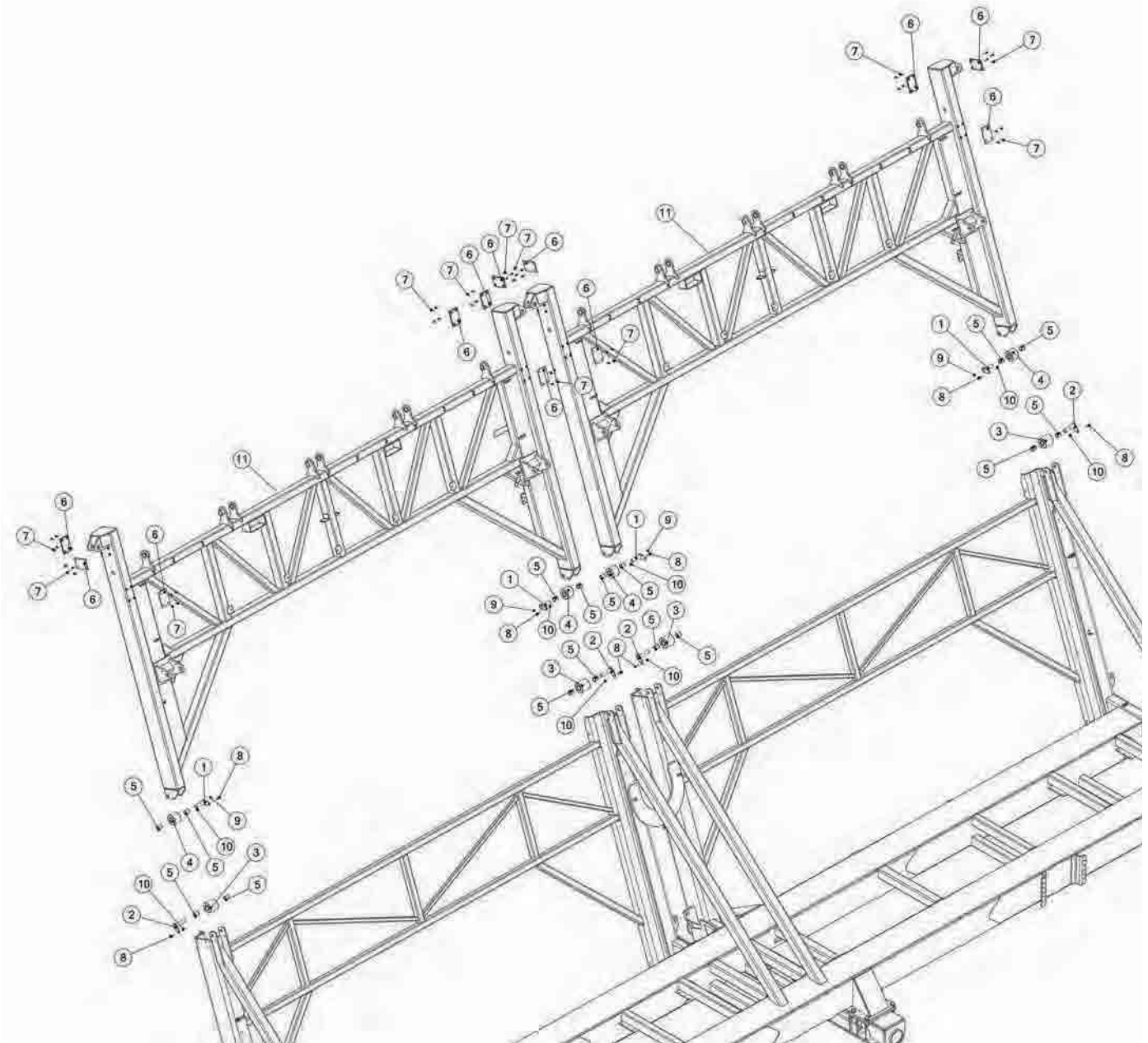


FIGURE 10

ELEVATOR & COMPONENTS

REF #	PART #	DESCRIPTION	QTY
1	88561	ROLLER PIN, LOWER	4
2	88563	ROLLER PIN, UPPER	4
3	88659	UPPER ROLLER ASSEMBLY	4
4	88661	LOWER ROLLER ASSEMBLY	4
5	G16	BUSHING, BRONZE	16
6	88662	ELEVATOR WEAR PAD	12
7	YBFB10001	BOLT FLANGE, 5/16 X 1 G5	48
8	YBFB12150	BOLT FLANGE, 3/8 X 1-1/2 G5	8
9	G89	STRAIGHT ZERK, 1/4-28	4
10	YNFG12006	NUT FLANGE, 3/8 GF	8
11	88397	ELEVATOR	2

FIGURE 11

GREASE LINE & COMPONENTS

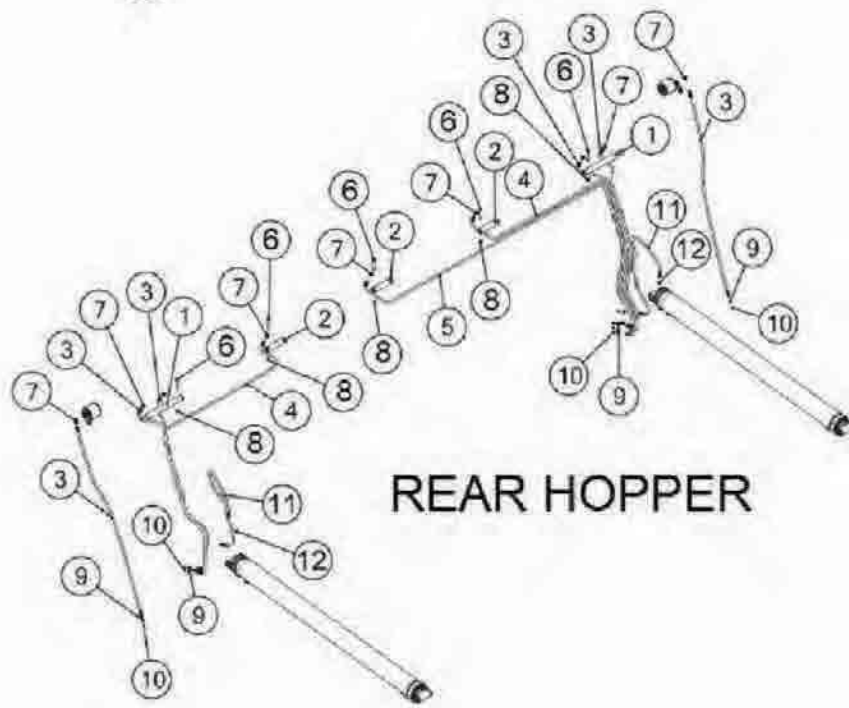
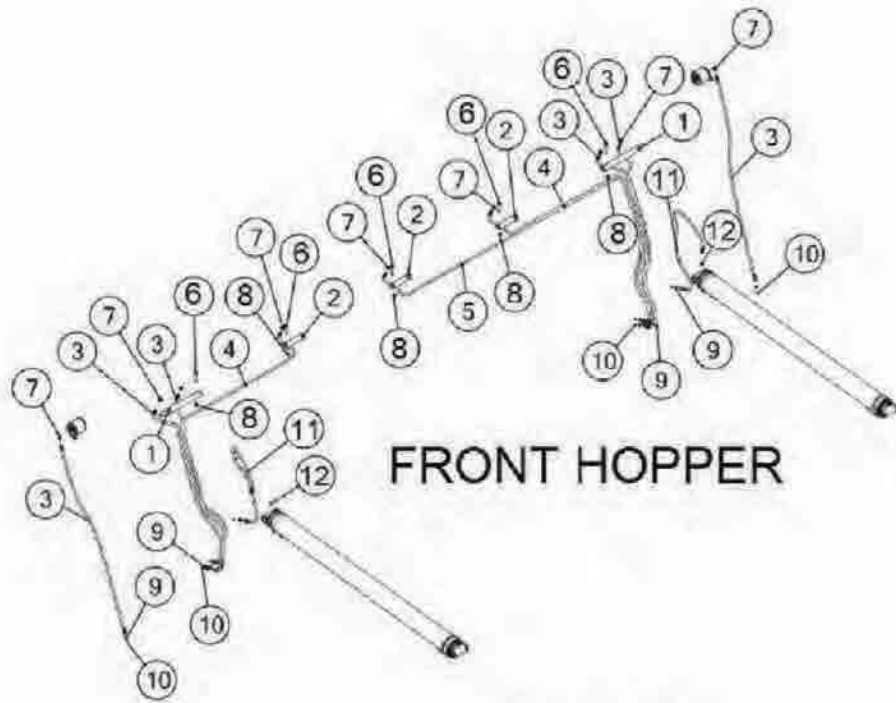


FIGURE 11

GREASE LINE & COMPONENTS

REF #	PART #	DESCRIPTION	QTY
1	88568	HOPPER PIVOT PIN, LONG	4
2	88567	HOPPER PIVOT PIN, SHORT	6
3	88909	GREASE HOSE, 3, 66	12
4	88907	GREASE HOSE, 3, 11	4
5	88889	GREASE HOSE, 3, 157-1/4	2
6	YBFB12300	BOLT FLANGE, 3/8 X 3 G5	10
7	89726	FITTING 90, 1/8NPT X 1/8NPSM	18
8	YNFG12006	NUT FLANGE, 3/8 GF	10
9	YNJM04005	NUT JAM, 1/8 A	26
10	G89	STRAIGHT ZERK, 1/4-28	21
11	89739	GREASE HOSE, 3, 45	4
12	TS323	FITTING STRAIGHT, 1/4-28, 1/8-27NPT	4

FIGURE 12

HYDRAULICS & COMPONENTS

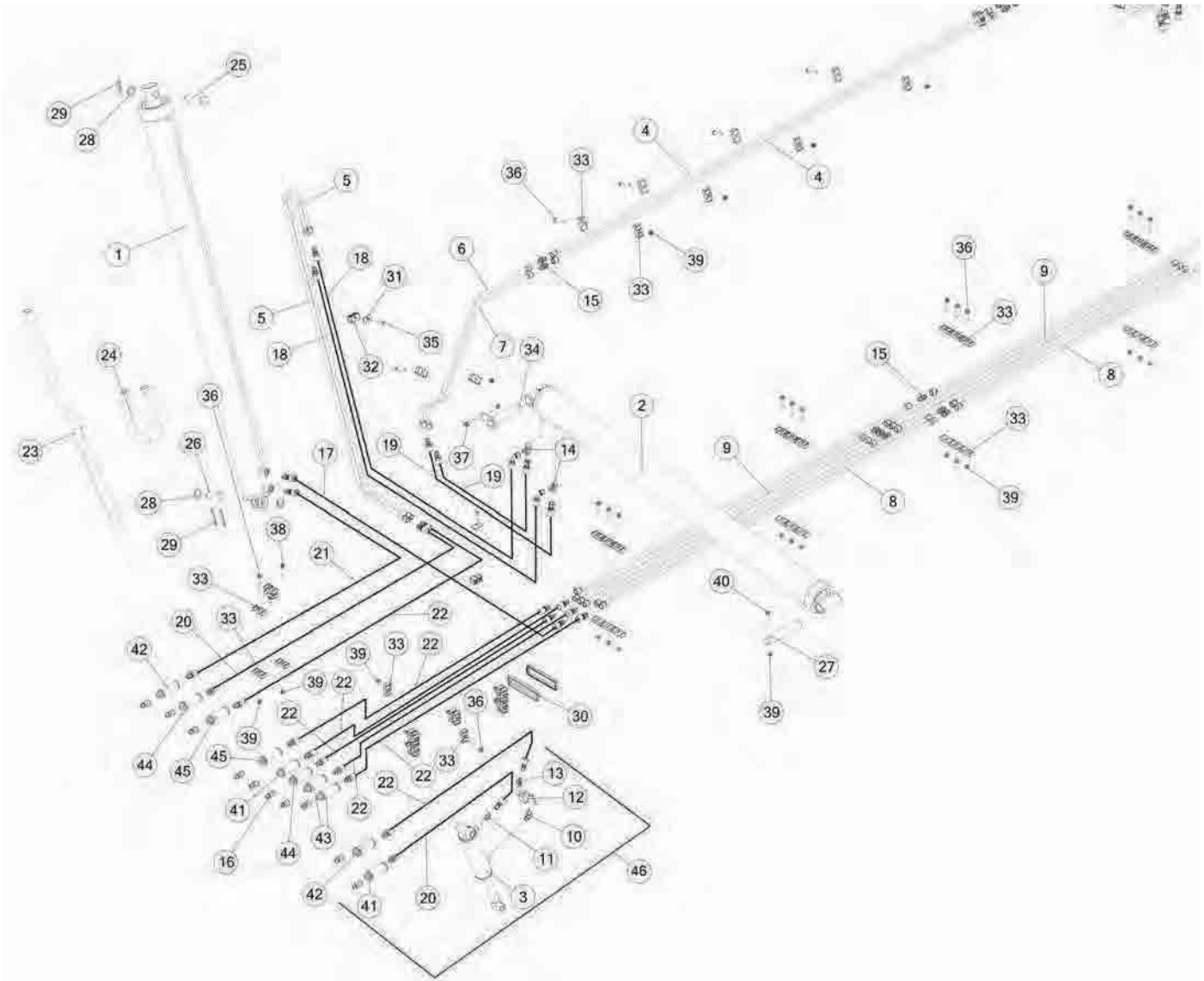


FIGURE 12

HYDRAULICS & COMPONENTS

REF #	PART #	DESCRIPTION	QTY
1	88423	HYDRAULIC CYLINDER, 5-1/2, 72	1
*	89037	SEAL KIT	1
2	88425	HYDRAULIC CYLINDER, 5, 71-1/4	1
*	89039	SEAL KIT	1
3	92420	CYLINDER, 3 X 6	1
*	94015	SEAL KIT	1
4	88529	HYDRAULIC TUBE, 5/8 X 119	2
5	88738	HYDRAULIC TUBE	2
6	90034	HYDRAULIC TUBE	1
7	90036	HYDRAULIC TUBE	1
8	88525	HYDRAULIC TUBE, 5/8 X 90	4
9	91693	HYDRAULIC TUBE, 5/8 X 78	6
10	70158	FITTING 90, 3/4ORB, 3/8NPT, STL	1
11	CHM207	FITTING STRAIGHT ,6JIC, 8ORB, STL	1
12	59235	BALL VALVE, HIGH PRESSURE, 3/8	1
13	58151	FITTING 45, 3/8JIC, 3/8-18NPTF	1
14	77465	FITING T, 8 JIC, 8 ORB, 8 JIC, STL	2
15	83779	FITTING STRAIGHT, 10 JIC, 10 JIC	8
16	67148	FITTING STRAIGHT, 8ORB, QUICK COUPLER TIP	10
17	88556	HYDRAULIC HOSE, 8, 45-3/4	1
18	88919	HYDRAULIC HOSE, 8, 98-1/2	2
19	88881	HYDRAULIC HOSE, 8, 39	2
20	92687	HYDRAULIC HOSE, 6, 120	2
21	88916	HYDRAULIC HOSE, 8, 208	1
22	88918	HYDRAULIC HOSE, 8, 195	7
23	94259	SPIRAL WRAP, 71	1
24	94260	SPIRAL WRAP, 24	1
25	88560	CYLINDER PIN, UPPER LIFT	1
26	88559	CYLINDER PIN, LOWER LIFT	1
27	88631	HOPPER TILT PIN	1
28	YWFL36005	WASHER, FLAT, SAE 1-1/4 ZC	3
29	YPCT10005	COTTER PIN, 5/16 X 2-1/2	3
30	94017	EDGING, 2 X 8	2
31	56563	CLAMP TOP PLATE	2
32	82667	HOSE CLAMP, DOUBLE, 5/8 TUBE	2
33	86567	DOUBLE CLAMP, UNIVERSAL	52
34	88549	CYLINDER PIN, TILT	1
35	56568	CLAMP BOLT, 5/16-18 x 1-3/8	2
36	YBFB12250	BOLT FLANGE, 3/8 X 2-1/2 G5	22
37	YBFB12175	BOLT FLANGE, 3/8 X 1-3/4 G5	1

FIGURE 12

HYDRAULICS & COMPONENTS

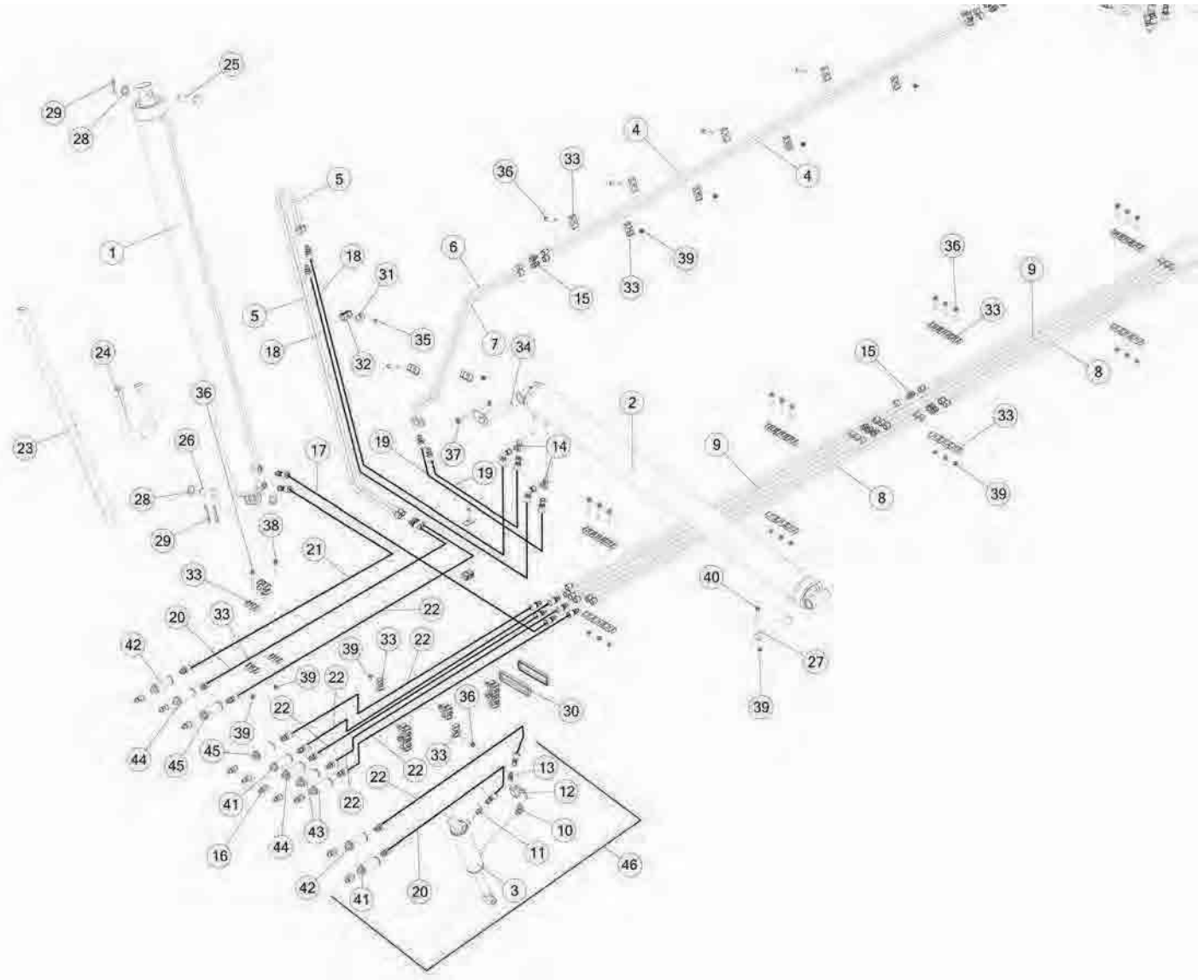


FIGURE 12

HYDRAULICS & COMPONENTS

REF #	PART #	DESCRIPTION	QTY
38	YBFB12225	BOLT FLANGE, 3/8 X 2-1/4 G5	1
39	YNFG12006	NUT FLANGE, 3/8 GF	55
40	YBFB12300	BOLT FLANGE, 3/8 X 3 G5	1
41	94025	HOSE GRIPS, GRAY	2
42	94023	HOSE GRIPS, RED	2
43	94026	HOSE GRIPS, YELLOW	2
44	94024	HOSE GRIPS, BLACK	2
45	94027	HOSE GRIPS, TAN	2
46	98758	HYDRAULIC JACK SUB-ASSEMBLY	1

FIGURE 13

HYDRAULICS & COMPONENTS

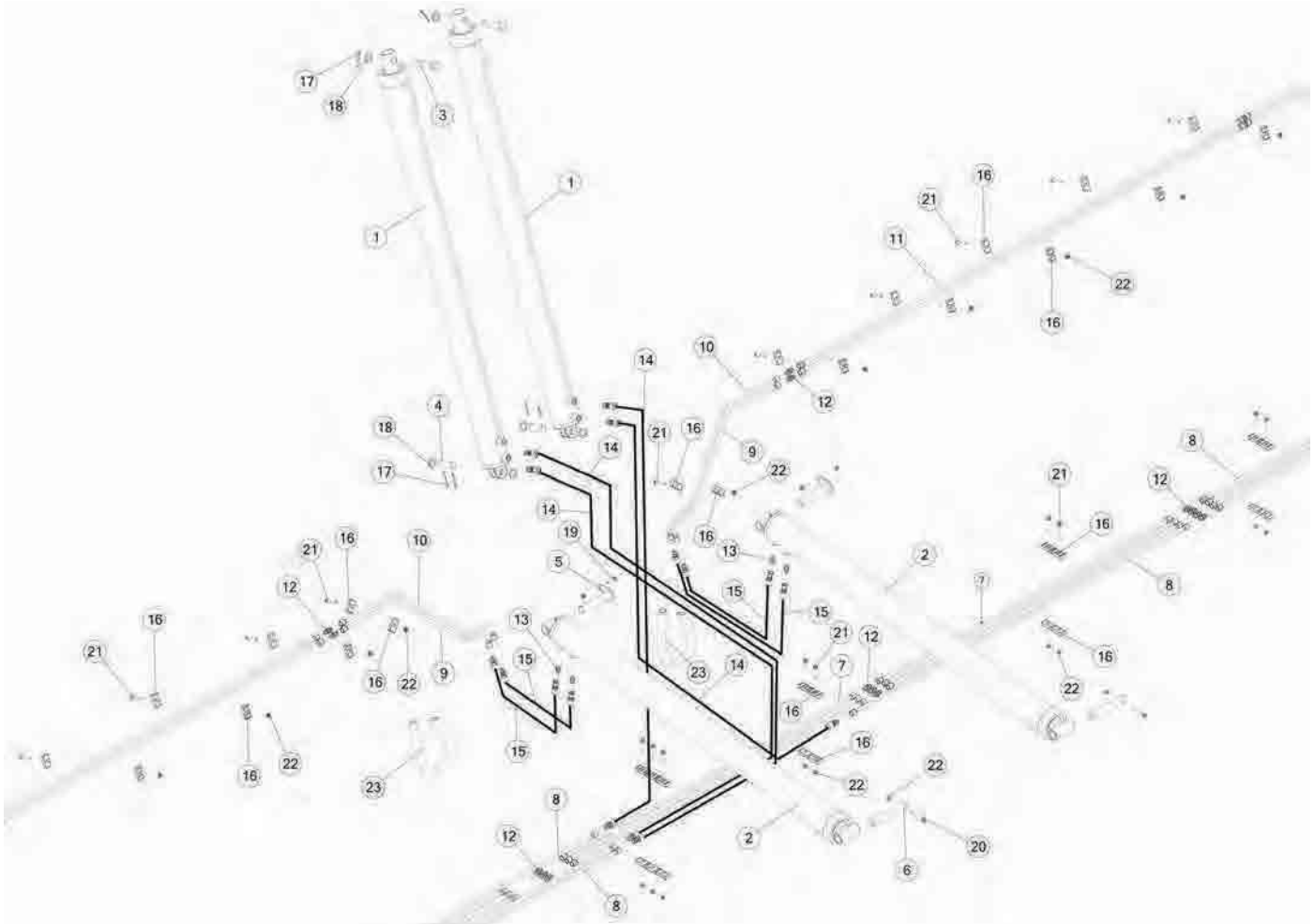


FIGURE 13

HYDRAULICS & COMPONENTS

REF #	PART #	DESCRIPTION	QTY
1	88424	HYDRAULIC CYLINDER, 4-3/4 X 72	2
*	89038	SEAL KIT	1
2	88425	HYDRAULIC CYLINDER, 5 X 71-1/4	2
*	89039	SEAL KIT	1
3	88560	CYLINDER PIN, UPPER LIFT	2
4	88559	CYLINDER PIN, LOWER LIFT	2
5	88549	CYLINDER PIN, TILT	2
6	88631	HOPPER TILT PIN	2
7	91693	HYDRAULIC TUBE, 5/8 X 78	6
8	88525	HYDRAULIC TUBE, 5/8 X 90	8
9	90036	HYDRAULIC TUBE	2
10	90034	HYDRAULIC TUBE	2
11	88529	HYDRAULIC TUBE, 5/8 X 119	2
12	83779	FITTING STRAIGHT, 10 JIC, 10 JIC	14
13	TS137	FITTING STRAIGHT, 8JIC, 8ORB, STL	4
14	88556	HYDRAULIC HOSE, 8, 45-3/4	4
15	88881	HYDRAULIC HOSE, 8, 39	4
16	86567	DOUBLE CLAMP, UNIVERSAL	44
17	YPCT10005	COTTER PIN, 5/16 X 2-1/2	6
18	YWFL36005	WASHER, FLAT, SAE 1-1/4 ZC	6
19	YBFB12175	BOLT FLANGE, 3/8 X 1-3/4 G5	2
20	YBFB12300	BOLT FLANGE, 3/8 X 3 G5	2
21	YBFB12250	BOLT FLANGE, 3/8 X 2-1/2 G5	22
22	YNFG12006	NUT FLANGE, 3/8 GF	26
23	94260	SPIRAL WRAP, 24	2

FIGURE 14

HYDRAULICS & COMPONENTS

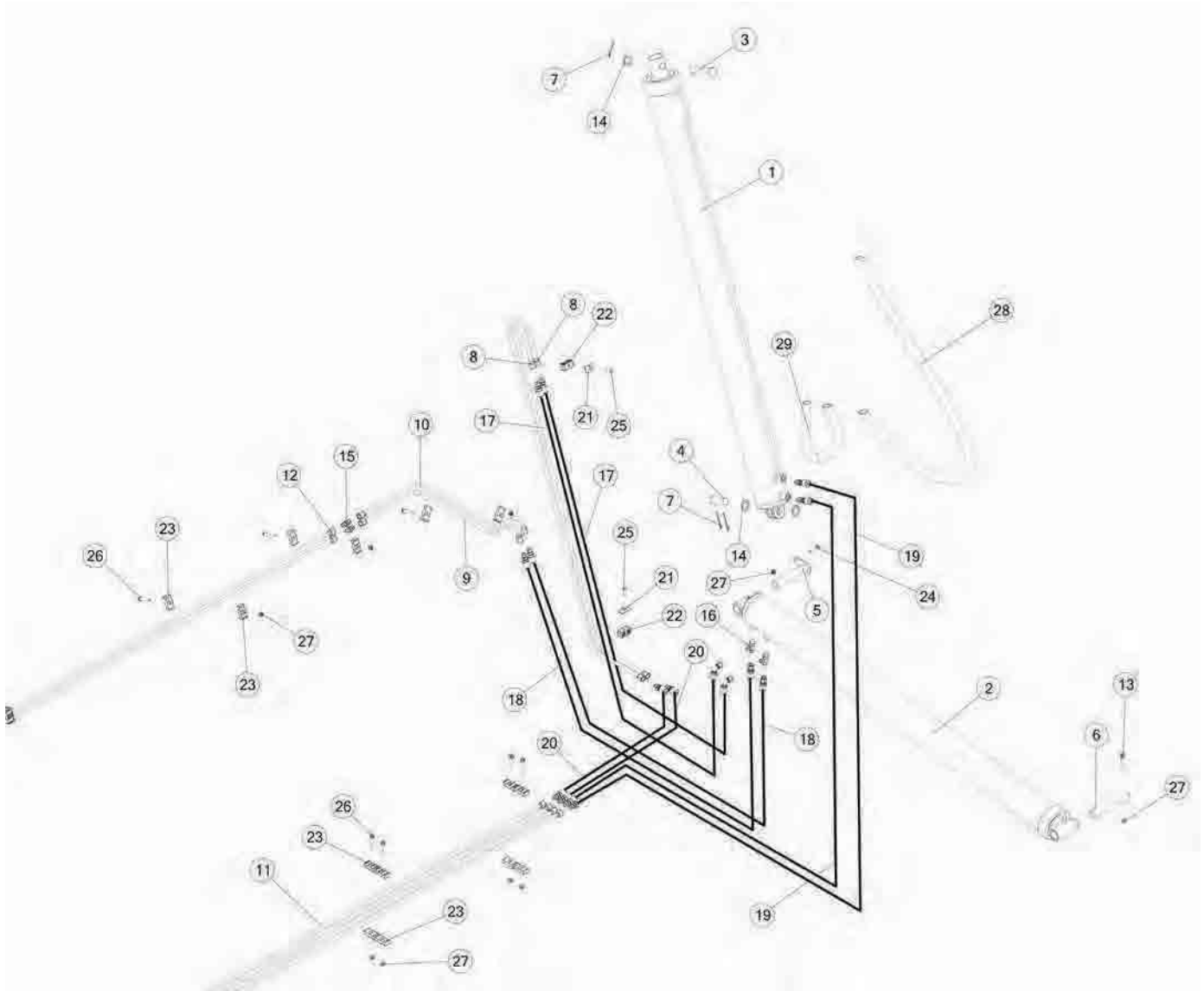


FIGURE 14

HYDRAULICS & COMPONENTS

REF #	PART #	DESCRIPTION	QTY
1	88423	HYDRAULIC CYLINDER, 5-1/2 X 72	1
*	89037	SEAL KIT	1
2	88425	HYDRAULIC CYLINDER, 5 X 71-1/4	1
*	89039	SEAL KIT	1
3	88560	CYLINDER PIN, UPPER LIFT	1
4	88559	CYLINDER PIN, LOWER LIFT	1
5	88549	CYLINDER PIN, TILT	1
6	88631	HOPPER TILT PIN	1
7	YPCT10005	COTTER PIN, 5/16 X 2-1/2	3
8	88738	HYDRAULIC TUBE	2
9	90036	HYDRAULIC TUBE	1
10	90034	HYDRAULIC TUBE	1
11	88525	HYDRAULIC TUBE, 5/8 X 90	4
12	88529	HYDRAULIC TUBE, 5/8 X 119	2
13	YBFB12300	BOLT FLANGE, 3/8 X 3 G5	1
14	YWFL36005	WASHER, FLAT, SAE 1-1/4 ZC	3
15	83779	FITTING STRAIGHT, 10 JIC, 10 JIC	2
16	77465	FITING T, 8 JIC, 8 ORB, 8 JIC, STL	2
17	88919	HYDRAULIC HOSE, 8, 98-1/2	2
18	88881	HYDRAULIC HOSE, 8, 39	2
19	88556	HYDRAULIC HOSE, 8, 45-3/4	2
20	93941	HYDRAULIC HOSE, 8, 24	2
21	56563	CLAMP TOP PLATE	2
22	82667	HOSE CLAMP, DOUBLE, 5/8" TUBE	2
23	86567	DOUBLE CLAMP, UNIVERSAL	14
24	YBFB12175	BOLT FLANGE, 3/8 X 1-3/4 G5	1
25	56568	CLAMP BOLT 5/16-18 x 1-3/8	2
26	YBFB12250	BOLT FLANGE, 3/8 X 2-1/2 G5	7
27	YNFG12006	NUT FLANGE, 3/8 GF	9
28	94259	SPIRAL WRAP, 71	1
29	94260	SPIRAL WRAP, 24	1

FIGURE 15

LIGHTS

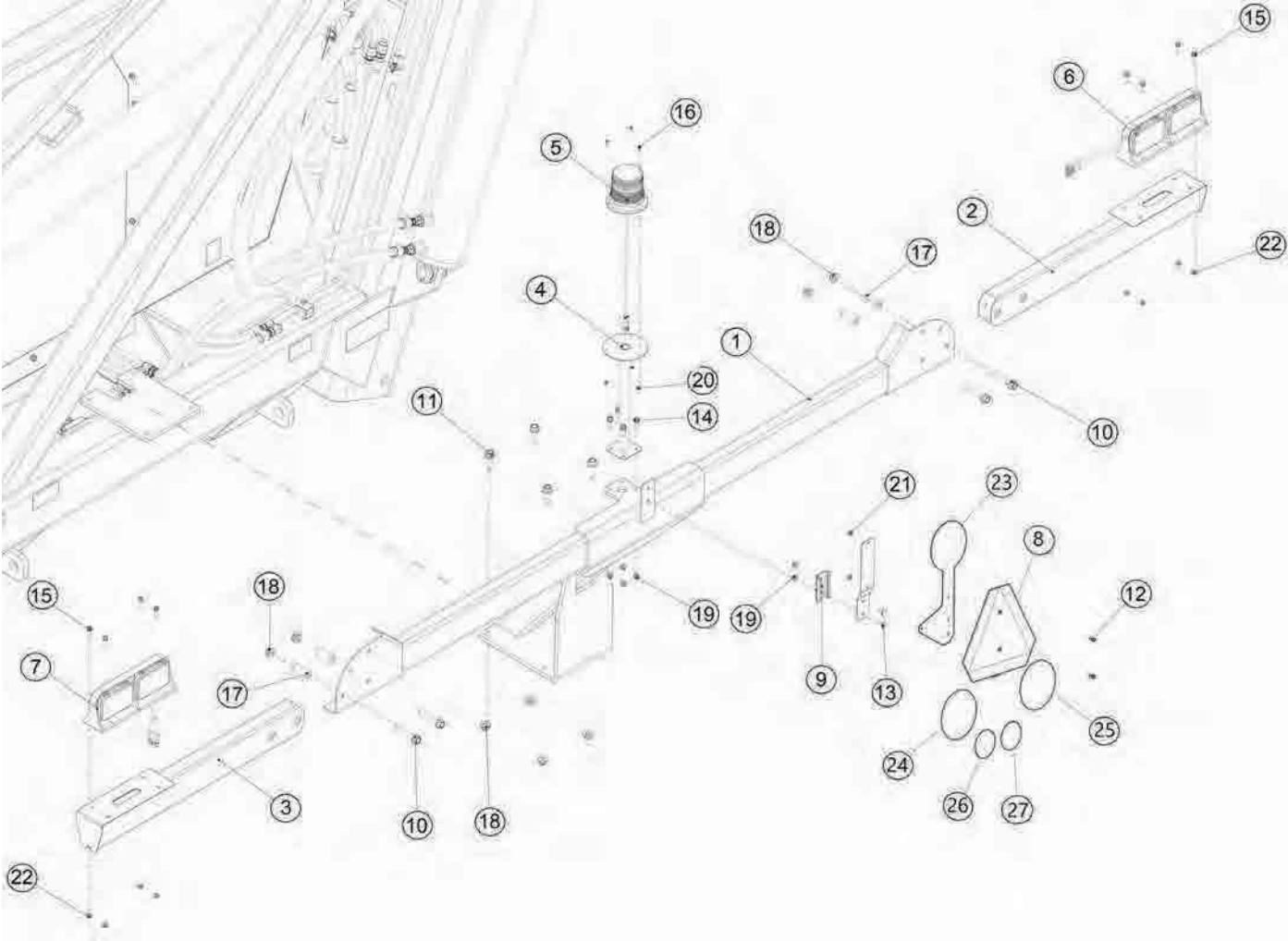


FIGURE 15

LIGHTS

REF #	PART #	DESCRIPTION	QTY
1	90106	MAIN LIGHT MOUNT BRACKET	1
2	90114B	LIGHT BAR, RH W/DECALS	1
3	90118B	LIGHT BAR, LH W/DECALS	1
4	94099	BEACON MOUNT	1
5	94253	BEACON LIGHT	1
6	TFM71	TAIL LIGHT, LH	1
7	TFM72	LED TAIL LIGHT ASSY. RH	1
8	BFR723	SMV SIGN KIT	1
9	F97	SMV BRACKET	1
10	YBFB16300	BOLT FLANGE, 1/2 X 3 G5	4
11	YBFB16175	BOLT FLANGE, 1/2 X 1-3/4 G5	4
12	YSTP08005	TRUSS HEAD PHILLIPS MACH. SCREW, 1/4-20 X 1/2	2
13	YBCR10030	BOLT CARRIAGE, 5/16-18 X 3/4 G5 ZC	2
14	YBFB10001	BOLT FLANGE, 5/16 X 1 G5	4
15	YBFB08100	BOLT FLANGE, 1/4 X 1 G5	8
16	YSPP62006	PPHMS, #8-32 X .5	3
17	90116	SPACER	4
18	YNFG16003	NUT FLANGE, 1/2 GF	8
19	YNFG10005	NUT FLANGE, 5/16 GF	2
20	YNNY62005	NUT HEX, #8-32 LKNY G2 ZC	3
21	YNHX08005	NUT HEX, 1/4-20 NA A ZC	2
22	YNFG08010	NUT FLANGE, 1/4 GF	8
23	88414	SIGN BRACKET	1
24	88412	DECAL NOTICE 20MILE/H	1
25	88413	DECAL NOTICE 30KM/H	1
26	HS103201	DECAL NOTICE	1
27	HS103288	DECAL NOTICE	1
*	59057	ELECTRICAL, PLUG, PIN, MALE	2
*	74126	SEAL, WTHRPK, 14/16 AWG	2
*	94370	ELEC, WTHRPK, 2 WAY, MALE	1
*	94427	BEACON LIGHT ASSEMBLY (94253,59057,74126,94370)	1

FIGURE 16

ELECTRICAL

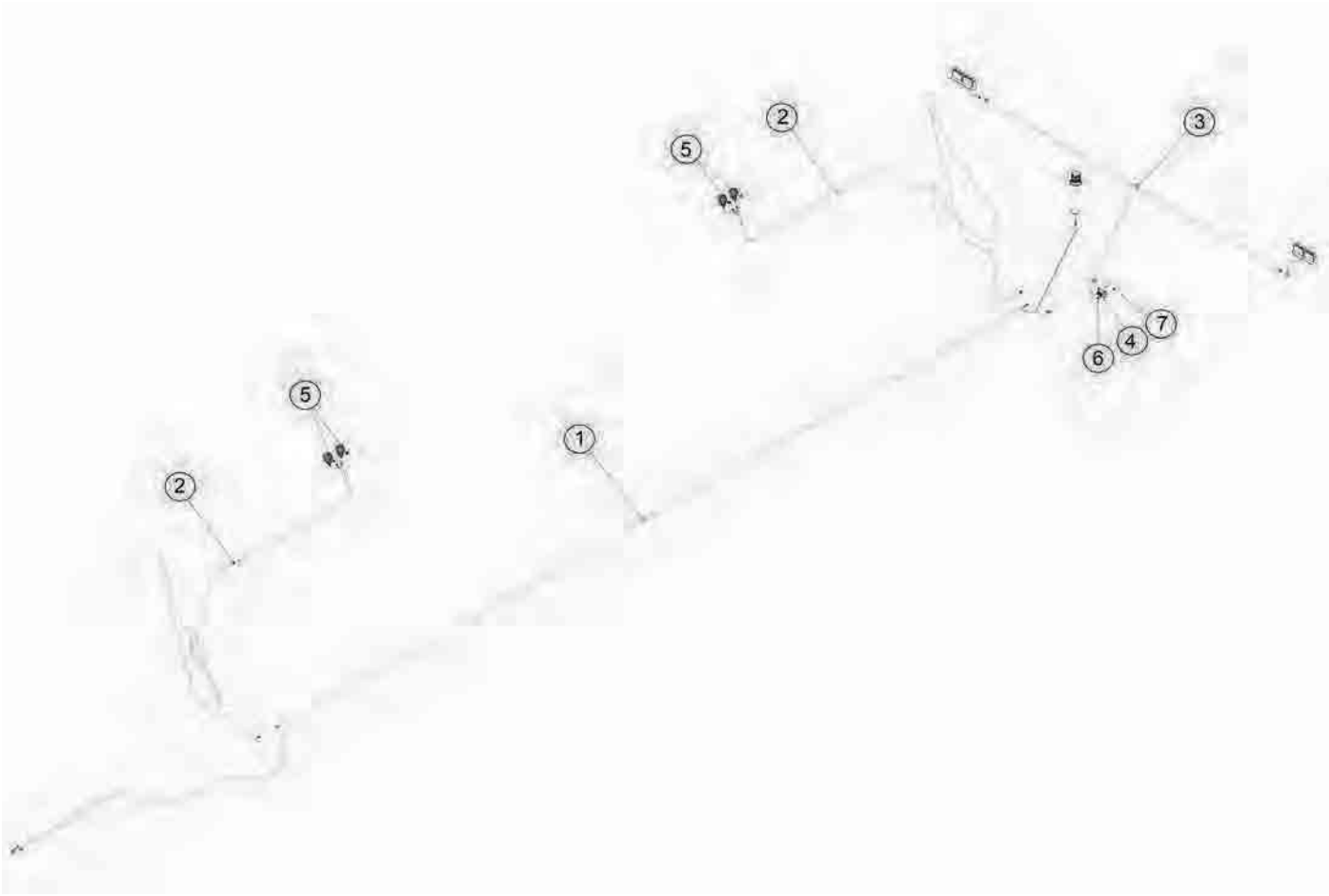


FIGURE 16

ELECTRICAL

REF #	PART #	DESCRIPTION	QTY
1	92649	HARNESS, MAIN	1
2	94311	WORK LIGHT HARNESS	2
3	88794	ELECTRIC HARNESS, REAR LIGHT	1
4	69908	MODULE, CONTROL, BLINKER	1
5	94339	WORK LIGHT ASSEMBLY	4
6	YSPN64005	MACHINE PPHS, #10-24 X 5/8 ZINC	3
7	YNNY64005	NUT HEX, #10-24 LKNY G2 ZC	3
*	94370	ELEC, WTHRPK, 2 WAY, MALE	2

FIGURE 17

OPTIONAL DUMPING EXTENSION FOR
UNLOADING INTO A 36' SEMI-TRAILER
(HDBODE36)

REAR BOX

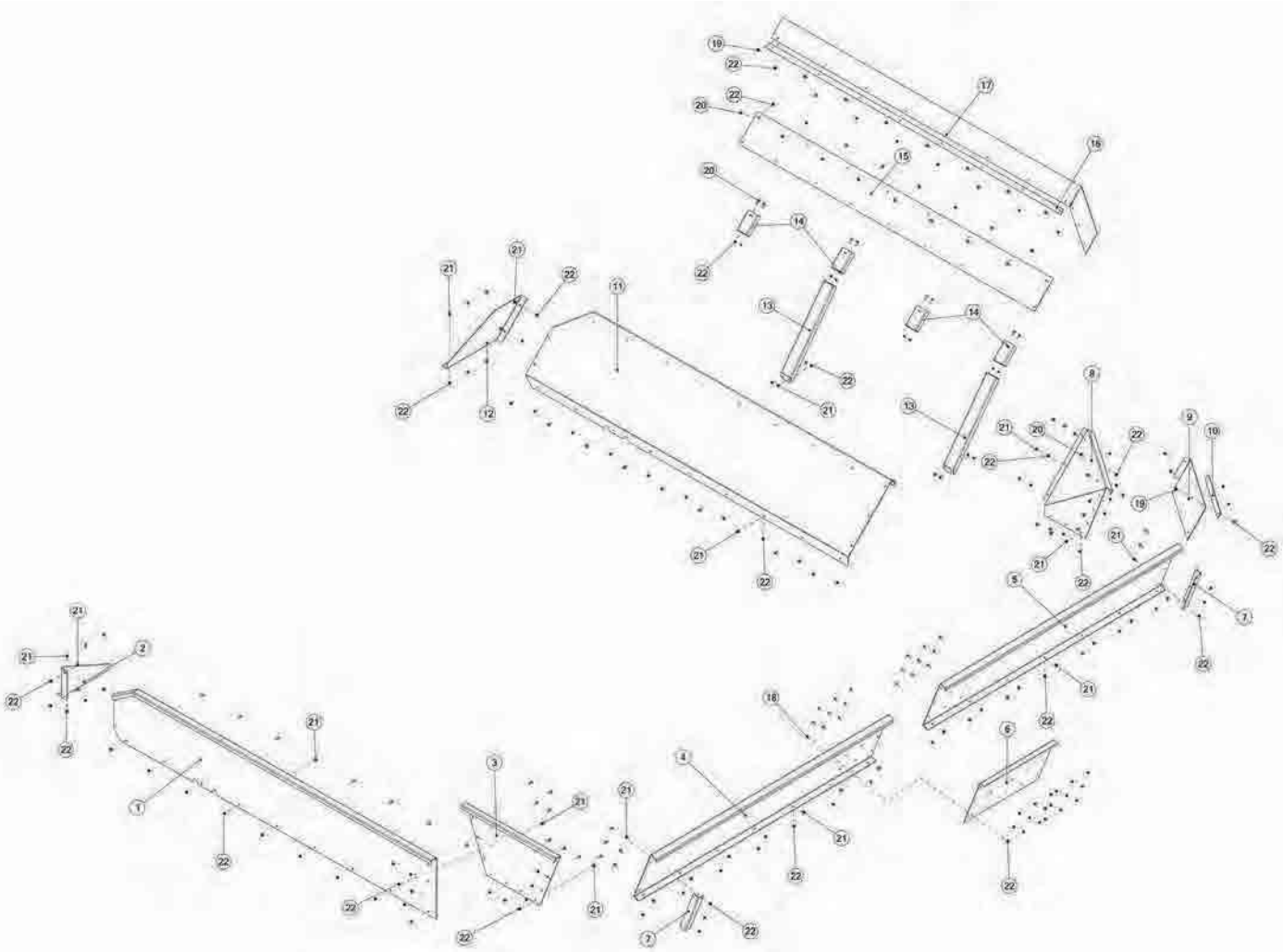


FIGURE 17

OPTIONAL DUMPING EXTENSION FOR UNLOADING INTO A 36' SEMI-TRAILER (HDBODE36)

REF #	PART #	DESCRIPTION	QTY
1	94036	EXTENSION PANEL, REAR	1
2	94034	EXTENSION SUPPORT, REAR	1
3	94035	CORNER EXTENSION, FRONT	1
4	88727	LIP EXTENSION PANEL, REAR	1
5	88731	LIP EXTENSION PANEL, FRONT	1
6	88733	CENTER LIP EXTENSION SUPPORT	1
7	88732	FLARE EXTENSION CORNER SUPPORT	2
8	88730	CORNER FLARE EXTENSION, FRONT	1
9	92763	RUBBER SEAL CORNER SUPPORT	1
10	92743	RUBBER HOLDDOWN STRIP	1
11	88728	FLARE EXTENSION PANEL, FRONT	1
12	88729	FLARE EXTENSION SUPPORT, FRONT	1
13	88736	FLARE EXTENSION BRACE	2
14	92733	SEAL EXTENSION BRACE	4
15	92714	RUBBER SEAL SUPPORT	1
16	92762	RUBBER SEAL HOLDDOWN	1
17	92716	CENTER RUBBER BOX SEAL	1
18	YBCR10030	BOLT CARRIAGE, 5/16-18 X 3/4 G5 ZC	18
19	YBFB10125	BOLT FLANGE, 5/16 X 1-1/4 G5	11
20	YBFB10001	BOLT FLANGE, 5/16 X 1 G5	19
21	YBFB10075	BOLT FLANGE, 5/16 X 3/4 G5	72
22	YNFG10005	NUT FLANGE, 5/16 GF	120

FIGURE 17

OPTIONAL DUMPING EXTENSION FOR
UNLOADING INTO A 36' SEMI-TRAILER
(HDBODE36)

FRONT BOX

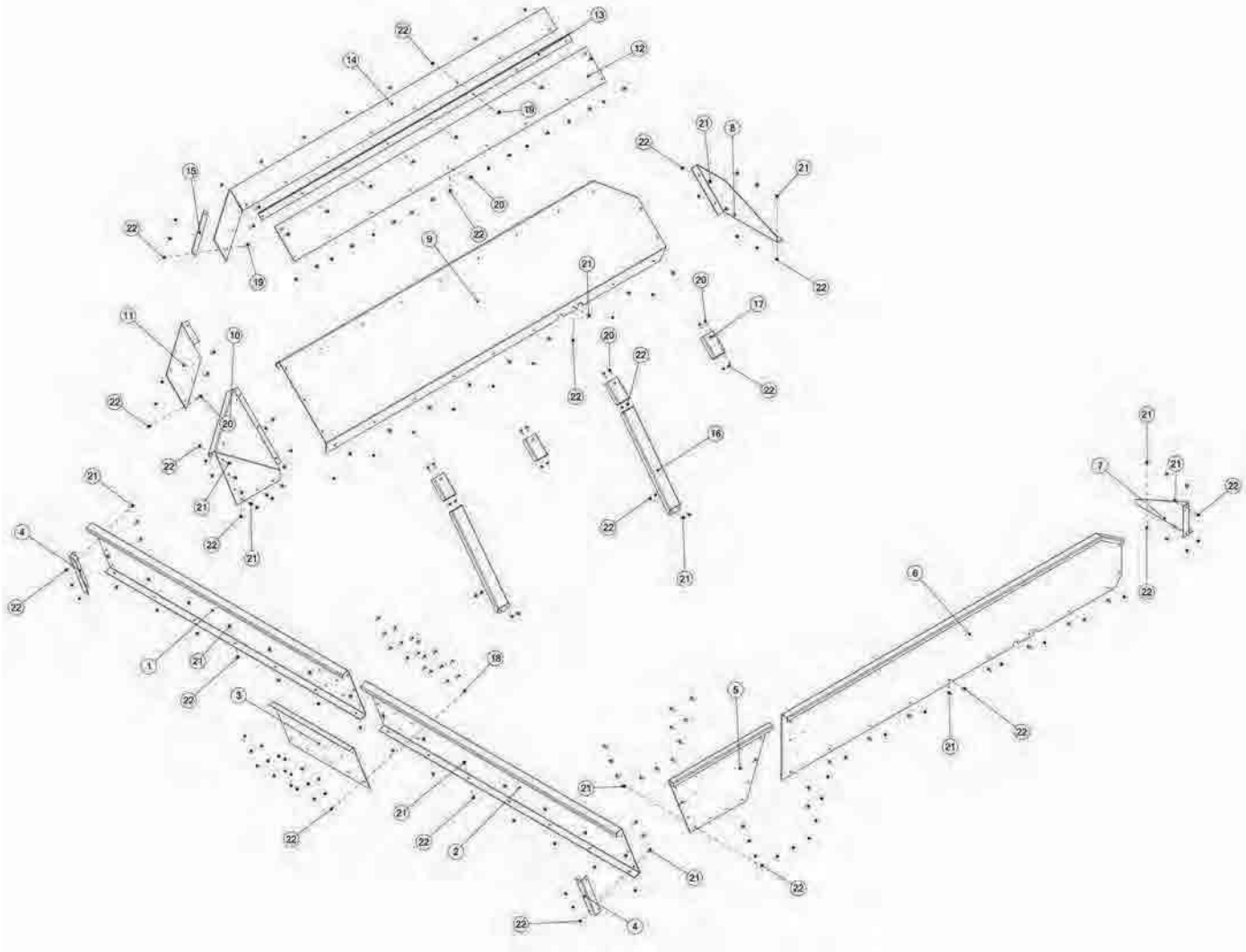


FIGURE 17

OPTIONAL DUMPING EXTENSION FOR UNLOADING INTO A 36' SEMI-TRAILER (HDBODE36)

REF #	PART #	DESCRIPTION	QTY
1	88727	LIP EXTENSION PANEL, REAR	1
2	88731	LIP EXTENSION PANEL, FRONT	1
3	88733	CENTER LIP EXTENSION SUPPORT	1
4	88732	FLARE EXTENSION CORNER SUPPORT	2
5	94035	CORNER EXTENSION, FRONT	1
6	94032	EXTENSION PANEL, FRONT	1
7	94033	EXTENSION SUPPORT, FRONT	1
8	88725	FLARE EXTENSION SUPPORT, REAR	1
9	88724	FLARE EXTENSION PANEL, REAR	1
10	88726	CORNER FLARE EXTENSION, REAR	1
11	92738	RUBBER SEAL CORNER SUPPORT	1
12	92714	RUBBER SEAL SUPPORT	1
13	92715	SILAGE DAM	1
14	92716	CENTER RUBBER BOX SEAL	1
15	92743	RUBBER HOLDDOWN STRIP	1
16	88736	FLARE EXTENSION BRACE	1
17	92733	SEAL EXTENSION BRACE	1
18	YBCR10030	BOLT CARRIAGE, 5/16-18 X 3/4 G5 ZC	18
19	YBFB10125	BOLT FLANGE, 5/16 X 1-1/4 G5	11
20	YBFB10001	BOLT FLANGE, 5/16 X 1 G5	19
21	YBFB10075	BOLT FLANGE, 5/16 X 3/4 G5	72
22	YNFG10005	NUT FLANGE, 5/16 GF	120

FIGURE 18

OPTIONAL DUMPING EXTENSION FOR UNLOADING INTO A 40' SEMI-TRAILER (HDBODE40)

REAR BOX

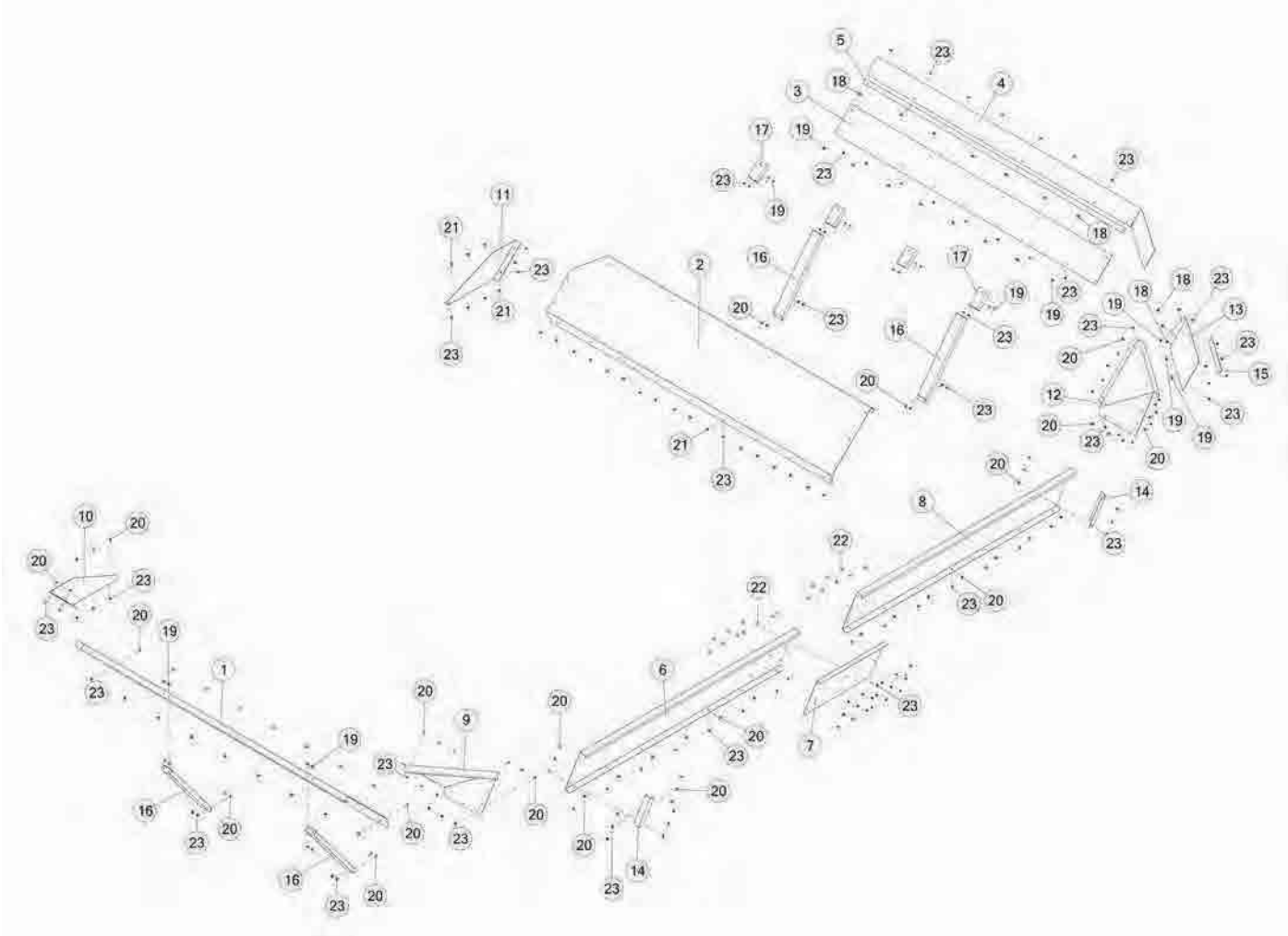


FIGURE 18

OPTIONAL DUMPING EXTENSION FOR UNLOADING INTO A 40' SEMI-TRAILER (HDBODE40)

REF #	PART #	DESCRIPTION	QTY
1	88724	FLARE EXTENSION PANEL, REAR	1
2	88728	FLARE EXTENSION PANEL, FRONT	1
3	92714	RUBBER SEAL SUPPORT	1
4	92716	CENTER RUBBER BOX SEAL	1
5	92762	RUBBER SEAL HOLDDOWN	1
6	88727	LIP EXTENSION PANEL, REAR	1
7	88733	CENTER LIP EXTENSION SUPPORT	1
8	88731	LIP EXTENSION PANEL, FRONT	1
9	88726	CORNER FLARE EXTENSION, REAR	1
10	88725	FLARE EXTENSION SUPPORT, REAR	1
11	88729	FLARE EXTENSION SUPPORT, FRONT	1
12	88730	CORNER FLARE EXTENSION, FRONT	1
13	92763	RUBBER SEAL CORNER SUPPORT	1
14	88732	FLARE EXTENSION CORNER SUPPORT	2
15	92743	RUBBER HOLDDOWN STRIP	1
16	88736	FLARE EXTENSION BRACE	4
17	92733	SEAL EXTENSION BRACE	4
18	YBFB10125	BOLT FLANGE, 5/16 X 1-1/4 G5	10
19	YBFB10001	BOLT FLANGE, 5/16 X 1 G5	23
20	YBFB10075	BOLT FLANGE, 5/16 X 3/4 G5	73
21	YNFG10005	NUT FLANGE, 5/16 GF	126
22	YBCR10030	BOLT CARRIAGE, 5/16-18 X 3/4 G5 ZC	18

FIGURE 18

OPTIONAL DUMPING EXTENSION FOR UNLOADING INTO A 40' SEMI-TRAILER (HDBODE40)

FRONT BOX

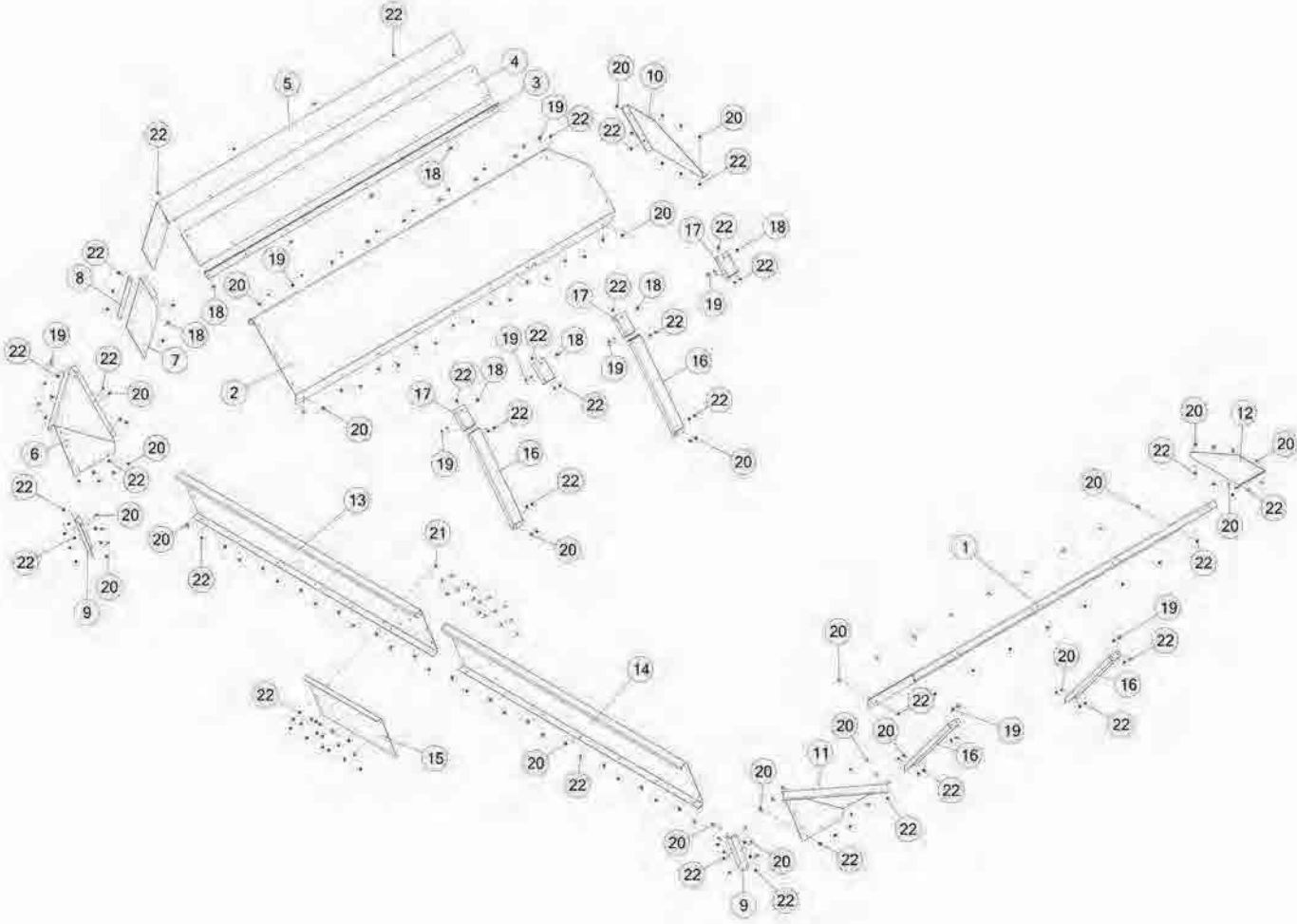


FIGURE 18

OPTIONAL DUMPING EXTENSION FOR UNLOADING INTO A 40' SEMI-TRAILER (HDBODE40)

REF #	PART #	DESCRIPTION	QTY
1	88728	FLARE EXTENSION PANEL, FRONT	1
2	88724	FLARE EXTENSION PANEL, REAR	1
3	92715	SILAGE DAM	1
4	92714	RUBBER SEAL SUPPORT	1
5	92716	CENTER RUBBER BOX SEAL	1
6	88726	CORNER FLARE EXTENSION, REAR	1
7	92738	RUBBER SEAL CORNER SUPPORT	1
8	92743	RUBBER HOLDDOWN STRIP	1
9	88732	FLARE EXTENSION CORNER SUPPORT	2
10	88725	FLARE EXTENSION SUPPORT, REAR	1
11	88730	CORNER FLARE EXTENSION, FRONT	1
12	88729	FLARE EXTENSION SUPPORT, FRONT	1
13	88727	LIP EXTENSION PANEL, REAR	1
14	88731	LIP EXTENSION PANEL, FRONT	1
15	88733	CENTER LIP EXTENSION SUPPORT	1
16	88734	EXTENSION BRACE	4
17	92733	SEAL EXTENSION BRACE	4
18	YBFB10125	BOLT FLANGE, 5/16 X 1-1/4 G5	11
19	YBFB10001	BOLT FLANGE, 5/16 X 1 G5	23
20	YBFB10075	BOLT FLANGE, 5/16 X 3/4 G5	74
21	YBCR10030	BOLT CARRIAGE, 5/16-18 X 3/4 G5 ZC	18
22	YNFG10005	NUT FLANGE, 5/16 GF	126

FIGURE 19

OPTIONAL CATEGORY 4 BULLNOSE HITCH (HTCHB4)

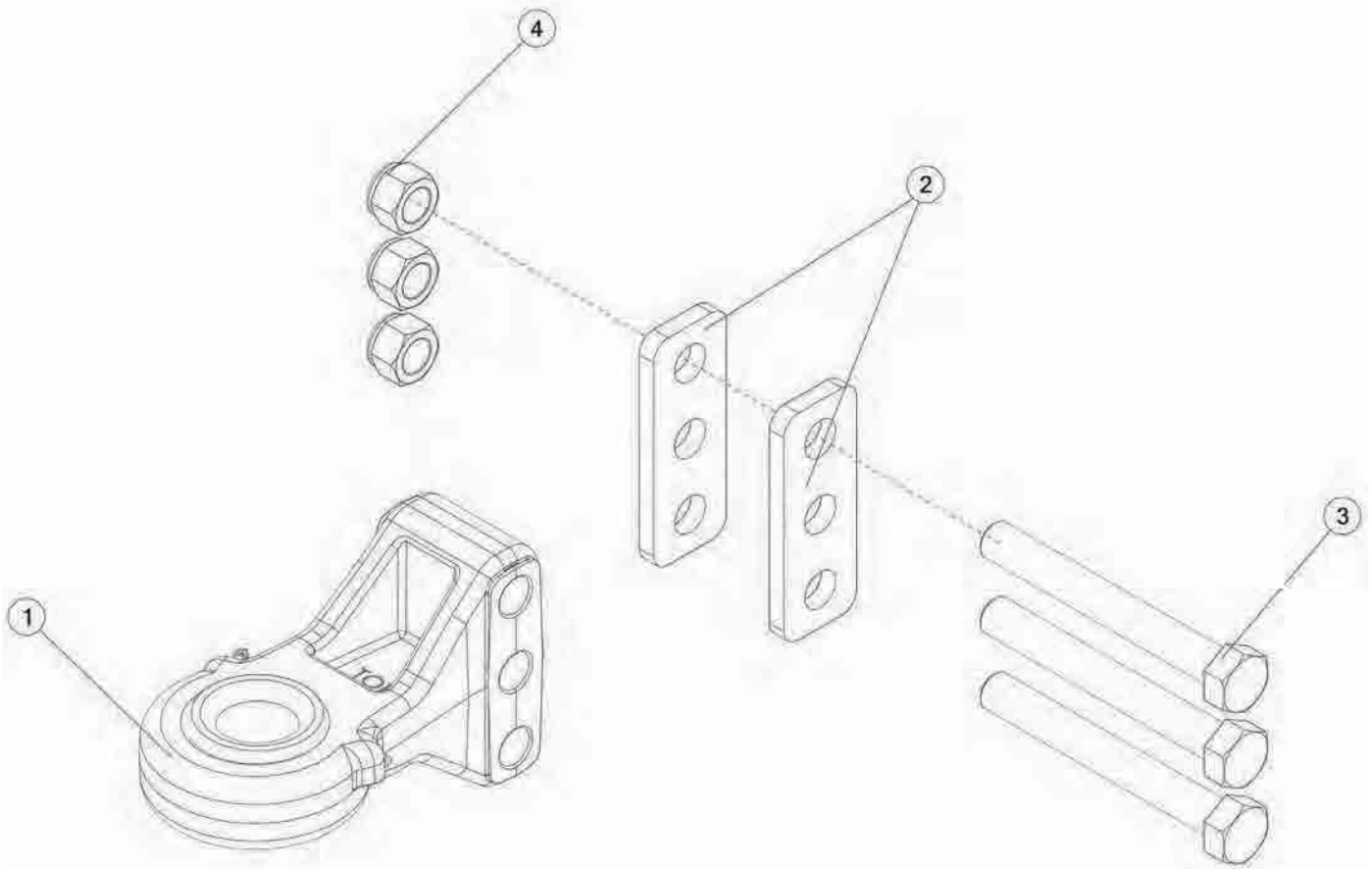


FIGURE 19

OPTIONAL CATEGORY 4 BULLNOSE HITCH (HTCHB4)

REF #	PART #	DESCRIPTION	QTY
1	80988	BULLNOSE HITCH CAT 4	1
2	91629	HITCH SPACER	2
3	YBHH32036	BOLT HEX, 1 X 8 G5	3
4	YNNY32005	NUT HEX, 1-8 LKNY G2 ZC	3

FIGURE 20

OPTIONAL CATEGORY 5 BULLNOSE HITCH (HTCHB5)

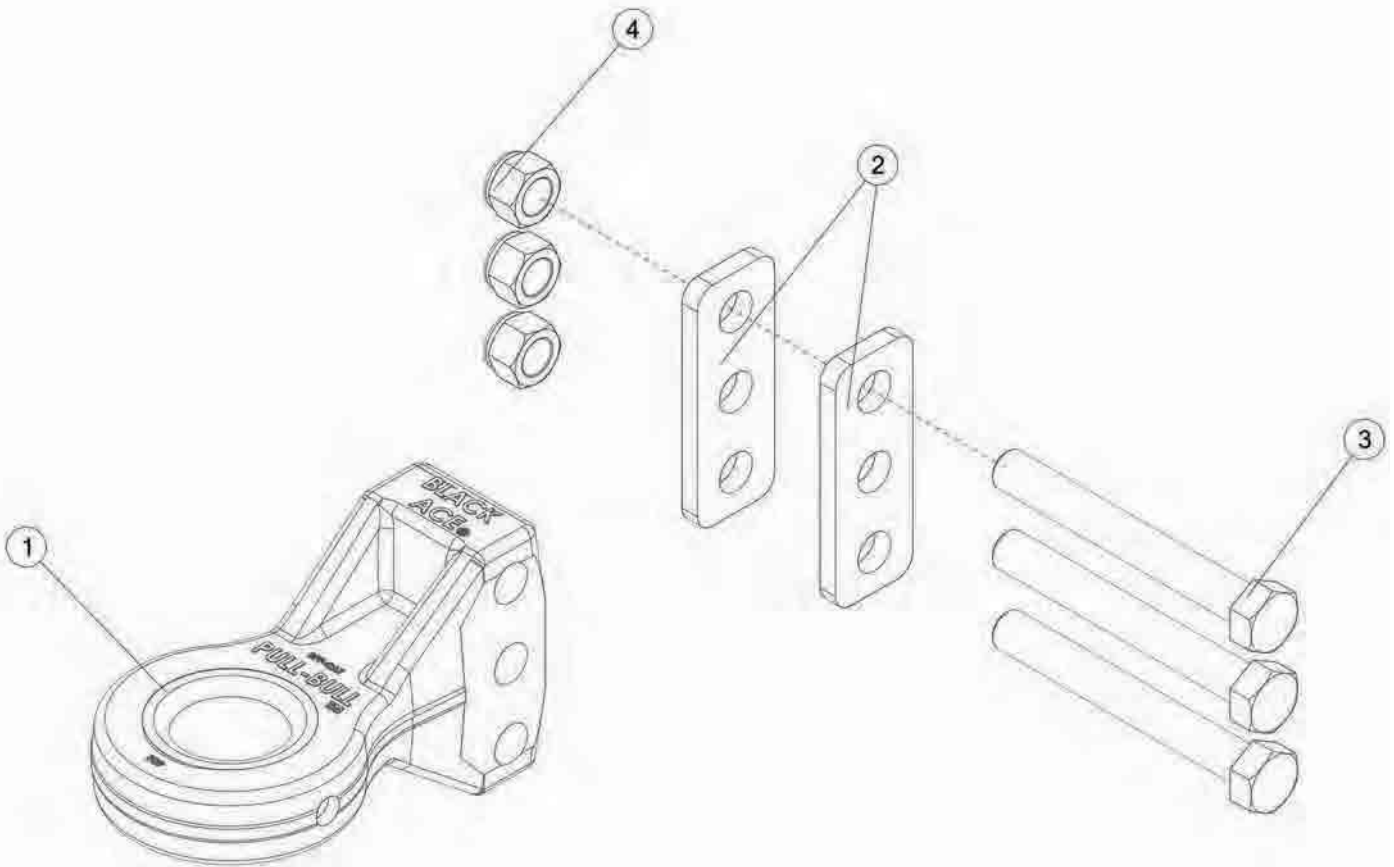


FIGURE 20
OPTIONAL CATEGORY 5 BULLNOSE HITCH
(HTCHB5)

REF #	PART #	DESCRIPTION	QTY
1	92719	BULLNOSE HITCH CAT 5	1
2	91629	HITCH SPACER	2
3	YBHH32036	BOLT HEX, 1 X 8 G5	3
4	YNNY32005	NUT HEX, 1-8 LKNY G2 ZC	3

TRACK SYSTEM



FIGURE #	CONTENTS	PAGE #
1	TRACK & UNDERCARRIAGE	50-51
2	FRAME ASSEMBLY	52-53
3	TENSION LINK ASSEMBLY	54-55
4	TENSIONER ASSEMBLY	56-57
5	ALIGNMENT ASSEMBLY	58-59
6	BOGIE ASSEMBLY MID-ROLLER	60-61
7	CARRIER ASSEMBLY	62-63
8	HUB IDLER	64-65
9	HUB MID-ROLLER	66-67
10	STRAIGHT PINS - FITMENT KITS	68-69
11	STABILIZER ASSEMBLIES	70-71

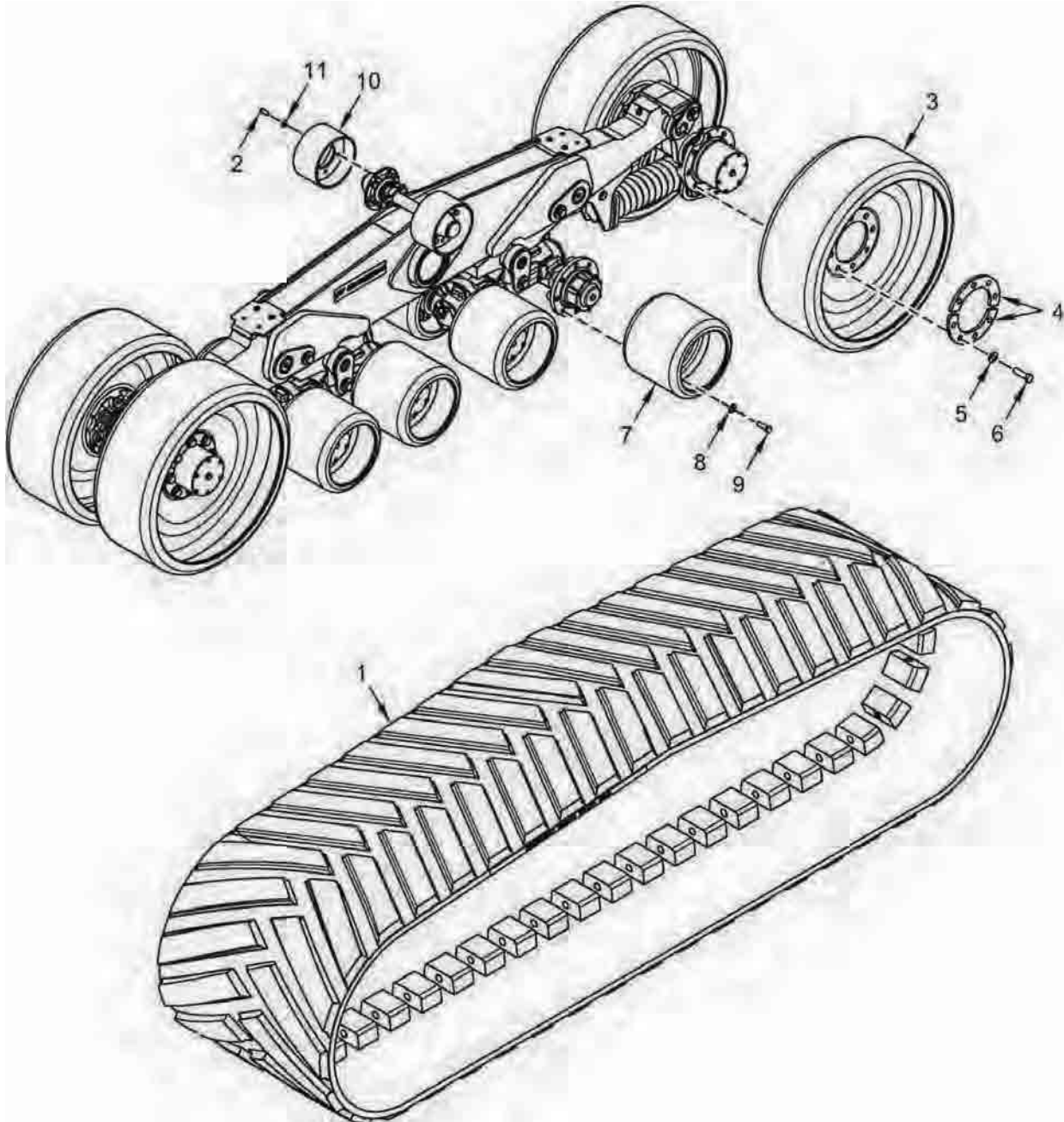
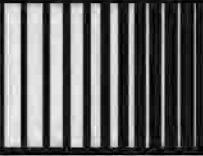


FIGURE 1

TRACK & UNDERCARRIAGE

REF #	PART #	DESCRIPTION	QTY
1	94121	RUBBER TRACK, 302 X 30	1
2	94131	BOLT HEX, M12 X 30 CL 10.9	10
3	94122	IDLER WHEEL, 30IN TRACK	4
4	94123	BACK-UP RING	8
5	94124	WASHER	4
6	94125	BOLT HEX, M20 X 70 CL 10.9	32
7	94126	MID-ROLLER WHEEL, 30IN TRACK	8
8	94127	WASHER FLAT, M16	64
9	94128	BOLT HEX, M16 X 50 CL 10.9	64
10	94129	CARRIER ROLLER	2
11	94130	WASHER, M12	10

FIGURE 2
FRAME ASSEMBLY

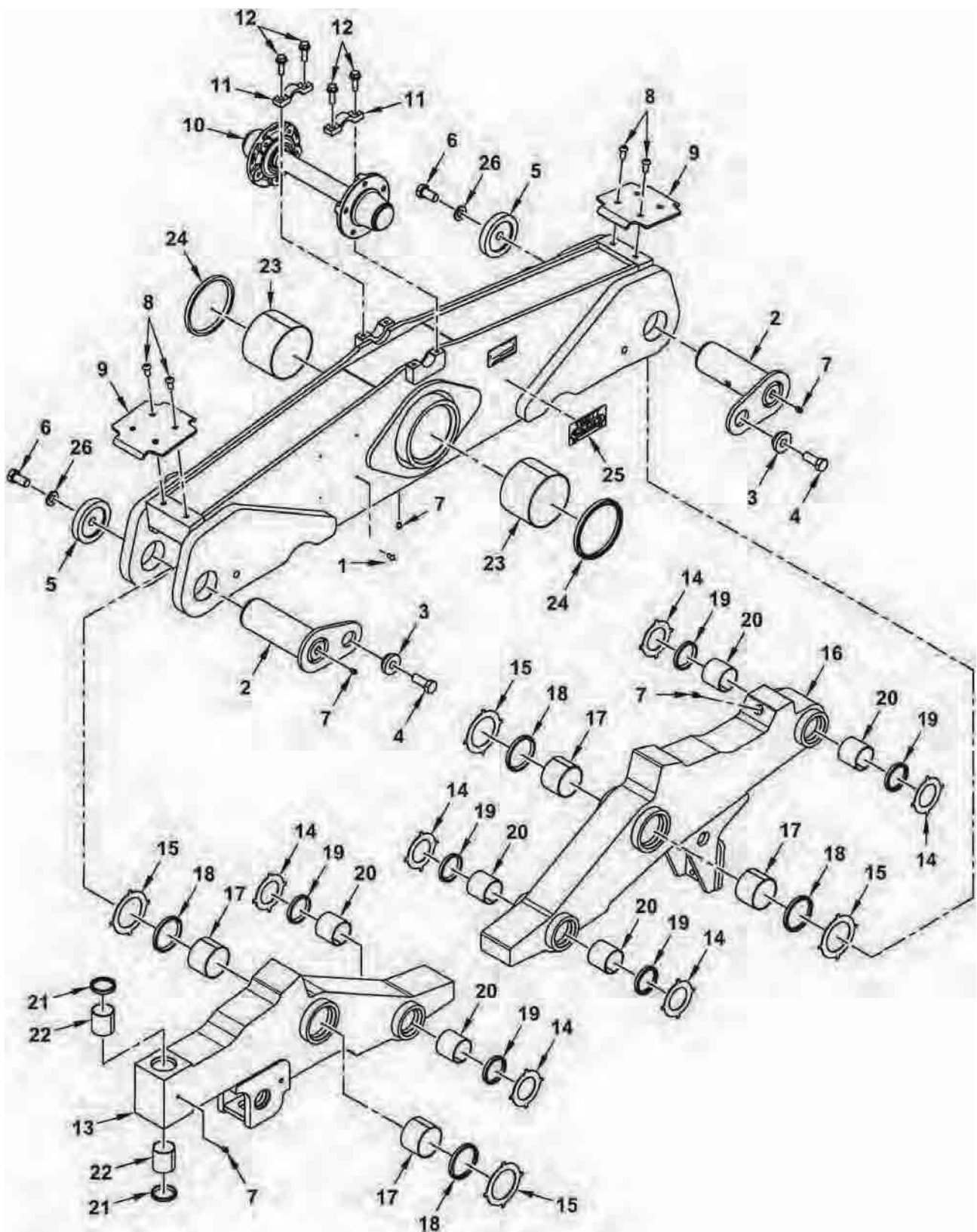


FIGURE 2 FRAME ASSEMBLY

REF #	PART #	DESCRIPTION	QTY
1	94158	SCREW, DRIVE, SCR TYPE-U SS	1
2	94133	MOUNTING PIN	2
3	94134	SPACER, FLANGED, M20	2
4	94135	BOLT HEX, M20 X 40 CL 10.9	2
5	94136	END CAP	2
6	94137	BOLT HEX, M20 X 40 CL 10.9	2
7	BFR28	FITTING, GREASE, 1/8-27 PT F SHORT	5
8	94139	BOLT SOCKET HEAD, M12 X 25 CL 10.9	4
9	94140	DEFLECTOR	2
10	94141	CARRIER ROLLER	1
11	94142	RETAINER, AXLE BLOCK	2
12	94143	BOLT HEX, FIG, M12 X 40 CL 10.9	4
13	94144	ALIGNMENT ARM	1
14	94145	WASHER, THRUST, 60MM	6
15	94146	WASHER, THRUST, 80MM	4
16	94147	TANDEM ARM	1
17	94148	BUSHING, LONG	4
18	94149	SEAL	4
19	94150	SEAL	6
20	94151	BUSHING, LONG	6
21	94152	SEAL	2
22	94153	BUSHING, LONG	2
23	94154	BUSHING, LONG	2
24	94155	SEAL	2
25	94156	DECAL, T T S GREASING	1
26	94157	WASHER, FLAT, ISO 7091 300HV ZN	2

FIGURE 3
TENSION LINK ASSEMBLY

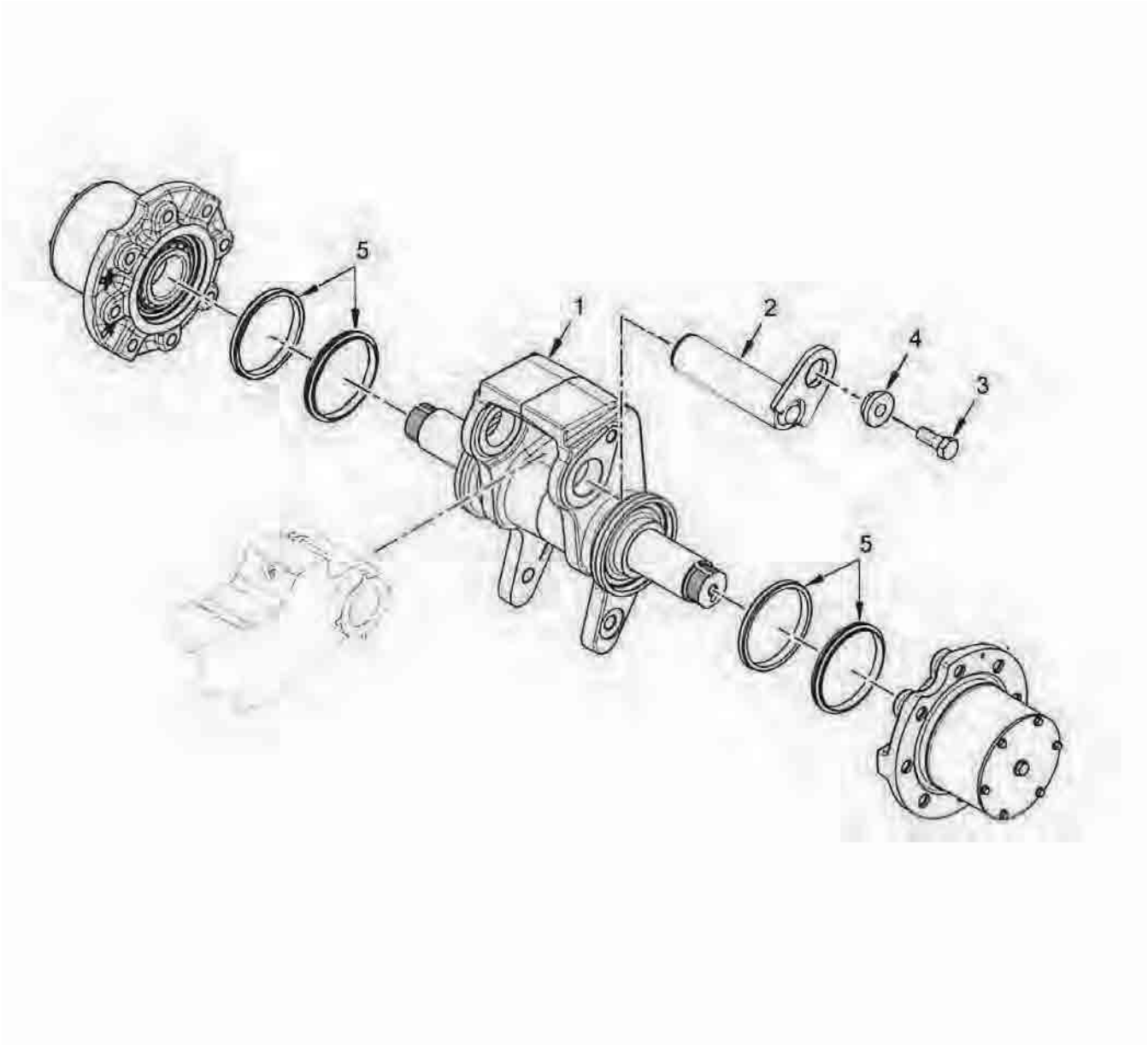


FIGURE 3

TENSION LINK ASSEMBLY

REF #	PART #	DESCRIPTION	QTY
*	94132	LINK ASSEMBLY, TENSION	1
1	94159	LINK, TENSION	1
2	94160	PIN, TENSIONER	1
3	94135	BOLT HEX, M20 X 50 X CL 10.9	1
4	94134	SPACER	1
5	94161	SEAL	2
*	94162	SEAL INSTALLATION TOOL	1

FIGURE 4

TENSIONER ASSEMBLY

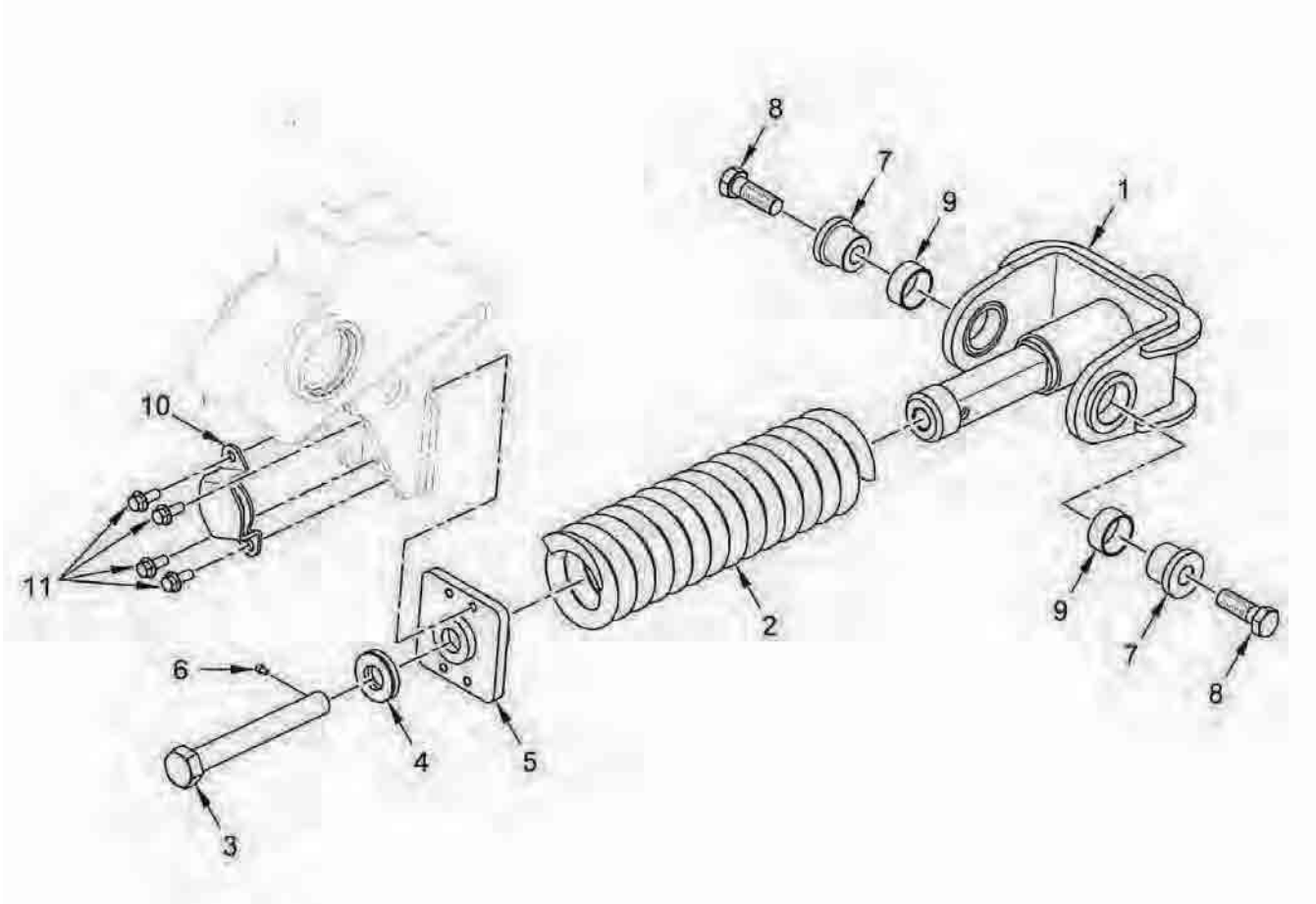


FIGURE 4

TENSIONER ASSEMBLY

REF #	PART #	DESCRIPTION	QTY
*	94163	TENSIONER ASSEMBLY, TRACK	1
1	94164	SEAT SPRING AND BUSHING	1
2	94165	SPRING	1
3	94166	SCREW, COMPRESSION, M30 X 3.5 X 240	1
4	YWFL36005	WASHER, FLAT 1.25	1
5	94167	SUPPORT, HEAD	1
6	94168	SCREW, SET, HEX SOCKET, M6 X 10 CL 12.9	1
7	94169	SPACER	2
8	94170	BOLT HEX, M24 X 70 CL 10.9	2
9	94171	BUSHING	2
10	94172	CAP, LOCKING	1
11	94173	BOLT HEX, FIX, M12 X 30 CL 10.9	4

FIGURE 5

ALIGNMENT ASSEMBLY

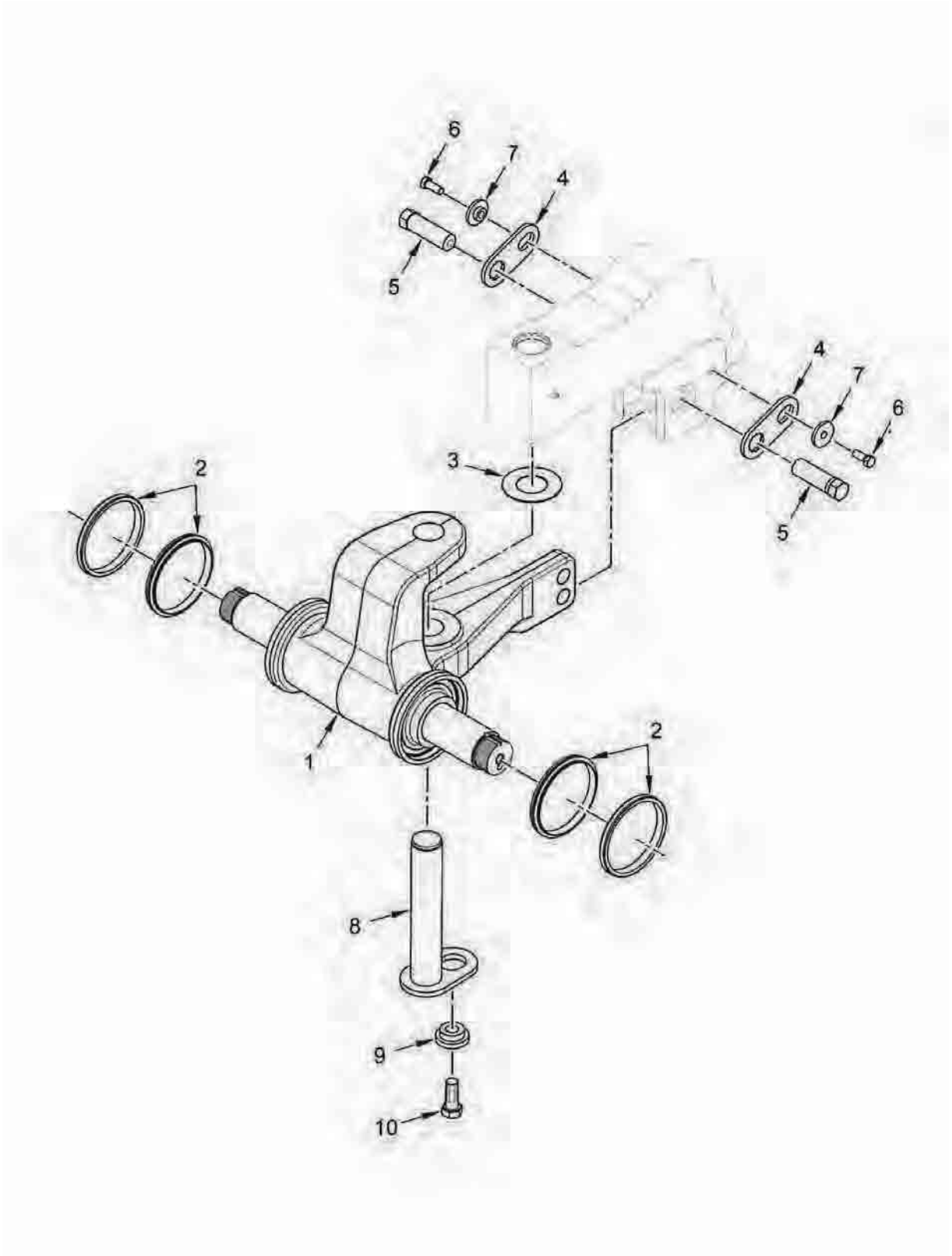


FIGURE 5

ALIGNMENT ASSEMBLY

REF #	PART #	DESCRIPTION	QTY
*	94174	ALIGNMENT ASSEMBLY, LEVER AND WASHER	1
1	94175	LEVER, ALIGNMENT	1
2	94161	SEAL	2
3	94180	WASHER, THRUST, 50 MM	1
4	94176	PLATE, LOCK	2
5	94177	SCREW, SET, SPECIAL, 1-1/8 X 85MM	2
6	94131	BOLT HEX, M12 X 30 CL 10.9	2
7	94178	SPACER	2
8	94179	PIN, MOUNTING	1
9	94134	SPACER	1
10	94135	BOLT HEX, M20 X 50 CL 10.9	1
*	94162	SEAL INSTALLATION TOOL	1

FIGURE 6
BOGIE ASSEMBLY MID-ROLLER

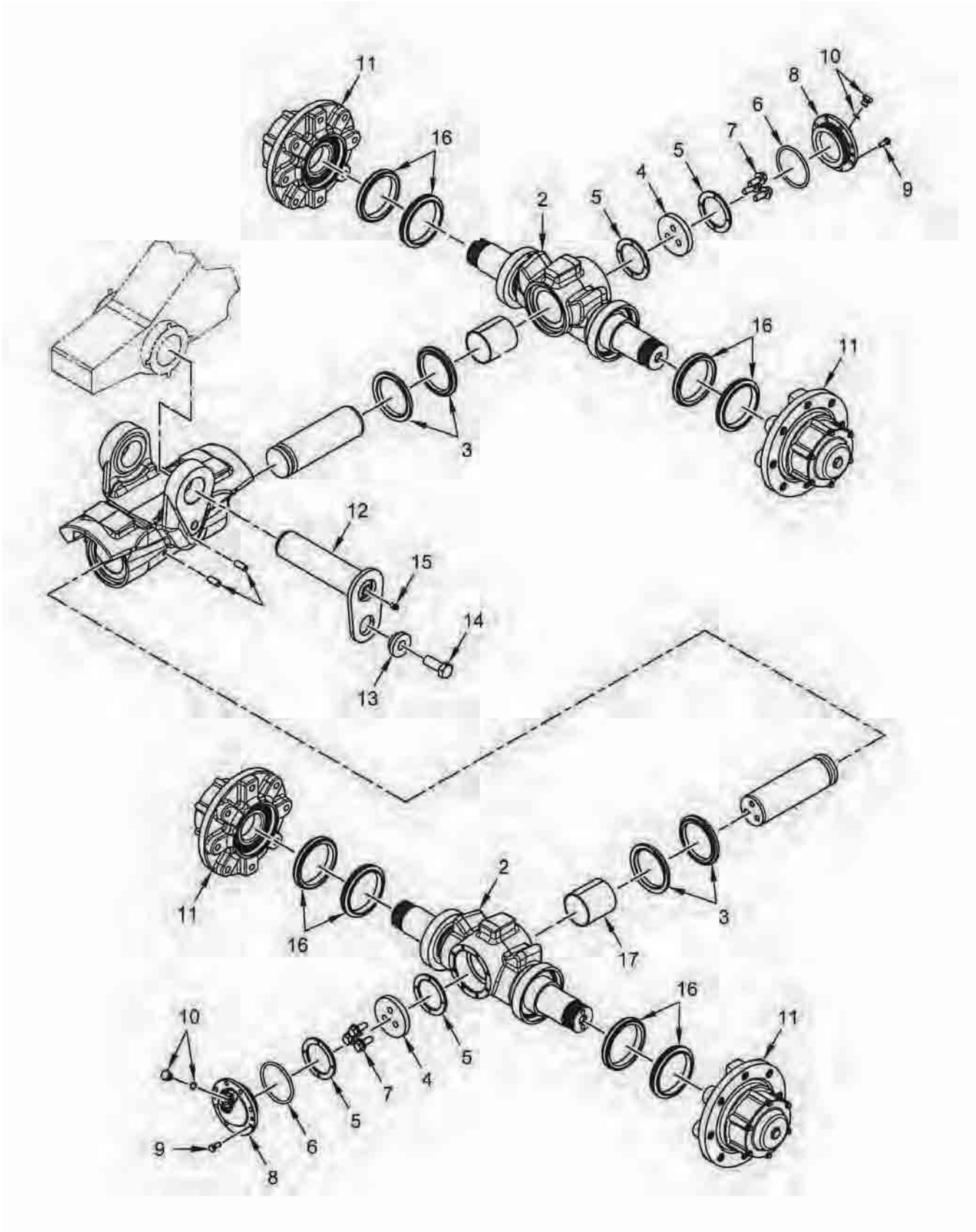


FIGURE 6

BOGIE ASSEMBLY MID-ROLLER

REF #	PART #	DESCRIPTION	QTY
*	94181	BOGIE ASSEMBLY, MID-ROLLER	1
*	94182	HUB AND AXLE ASSEMBLY, MID-ROLLER	2
1	94183	DOGHOUSE ASSEMBLY, MID-ROLLER	1
2	94184	AXLE, MID-ROLLER	2
3	94185	SEAL	2
4	94186	PLATE, END	2
5	94187	RING, THRUST, 70.3MM ID	4
6	94188	O-RING	2
7	94173	BOLT HEX, FIG, M12 X 30 CL 10.9	6
8	94189	COVER, END	2
9	94190	BOLT HEX, M8 X 20 CL 10.9	16
10	94191	PLUG, END COVER	2
11	94192	HUB, MID-ROLLER	4
12	94193	PIN, MOUNTING	1
13	94134	SPACER	1
14	94135	BOLT HEX, M20 X 50 CL 10.9	1
15	BFR28	FITTING, GREASE, 1/8-27 PTF SHORT	1
16	94194	SEAL	4
17	94195	BUSHING, PT, 70 X 7 X 80MM LONG	2
*	94219	SEAL INSTALLATION TOOL	1

FIGURE 7
CARRIER ASSEMBLY

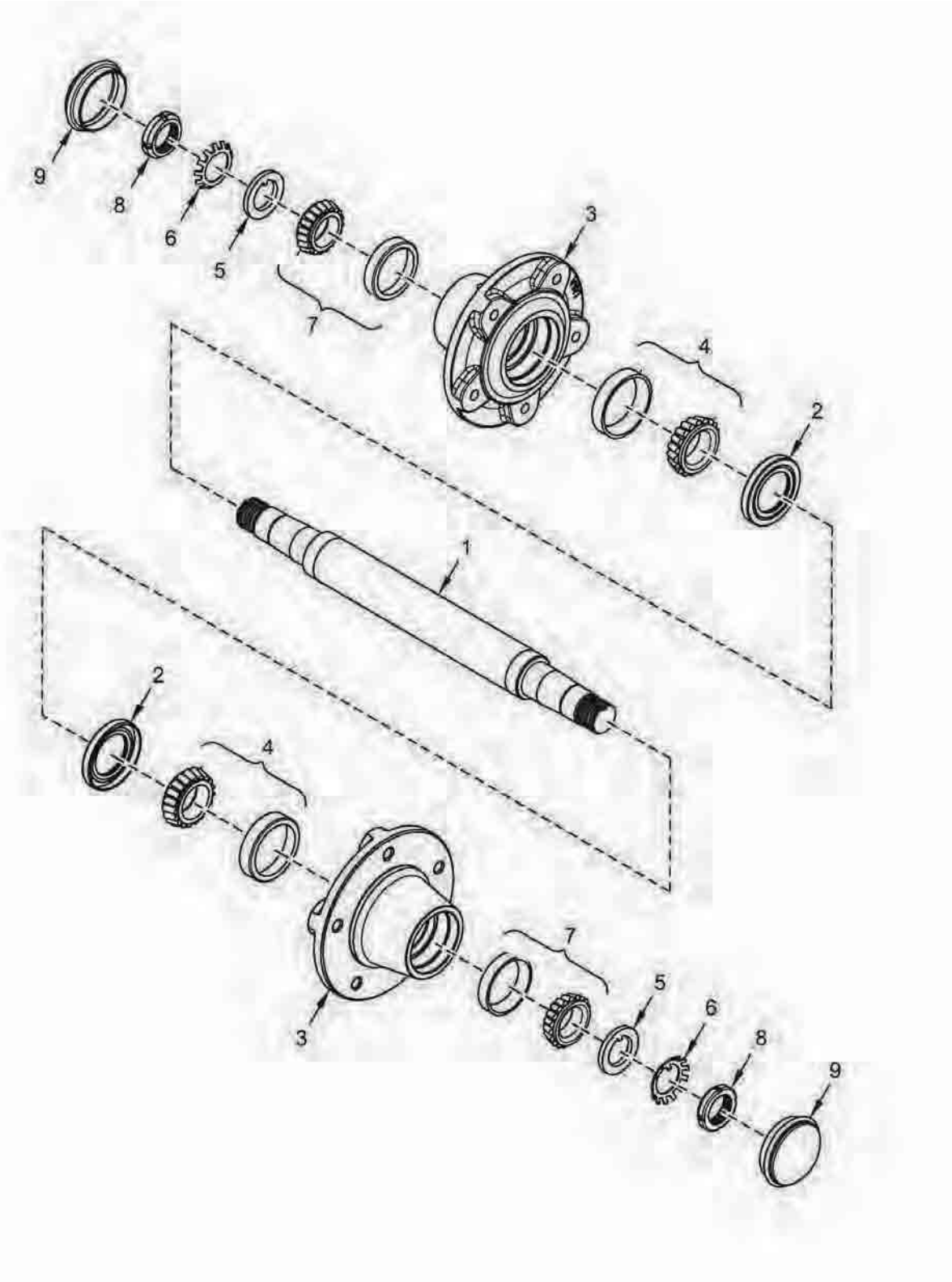


FIGURE 7

CARRIER ASSEMBLY

REF #	PART #	DESCRIPTION	QTY
*	94141	CARRIER ASSEMBLY, ROLLER	1
1	94196	AXLE, CARRIER ROLLER	1
2	94197	SEAL, GREASE	2
3	94198	HUB W/WASHER AND HUB CAB, ROLLER CARRIER	2
4	94199	BEARING SERVICE SET, INNER	2
5	94202	WASHER, TONGUE, #06	2
6	94203	WASHER, LOCK	2
7	94200	BEARING SERVICE SET, OUTER	2
8	94204	NUT, LOCK	2
9	94205	CAP, HUB	2
*	94206	BEARING LOCKNUT TOOL	1
*	94207	LOCK WASHER TAB BENDER TOOL	1

FIGURE 8
HUB - IDLER

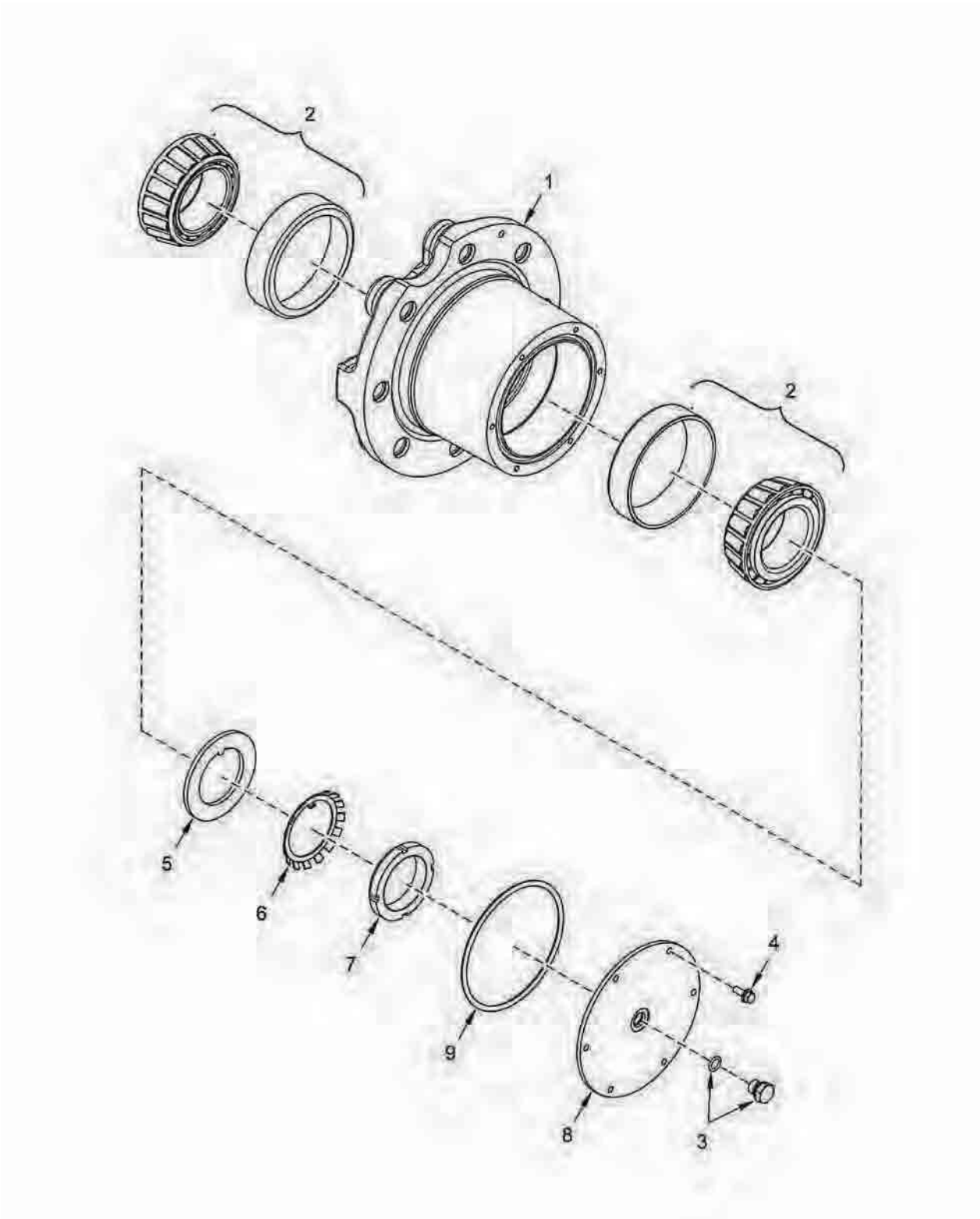


FIGURE 8

HUB - IDLER

REF #	PART #	DESCRIPTION	QTY
1	94209	HUB, IDLER	1
2	94210	BEARING SERVICE SET, IDLER	2
3	94191	PLU ASSEMBLY, INCLUDES O-RING	1
4	94216	BOLT HEX, FLANGE, M6 X 16 CL 10.9	6
5	94211	WASHER, TONGUE	1
6	94212	WASHER, LOCK	1
7	94213	NUT, LOCK	1
8	94214	COVER, IDLER HUB	1
9	94215	O-RING	1
*	94208	BEARING LOCKNUT SOCKET TOOL	1
*	94207	LOCKER WASHER TAB BENDER TOOL	1

FIGURE 9
HUB MID-ROLLER

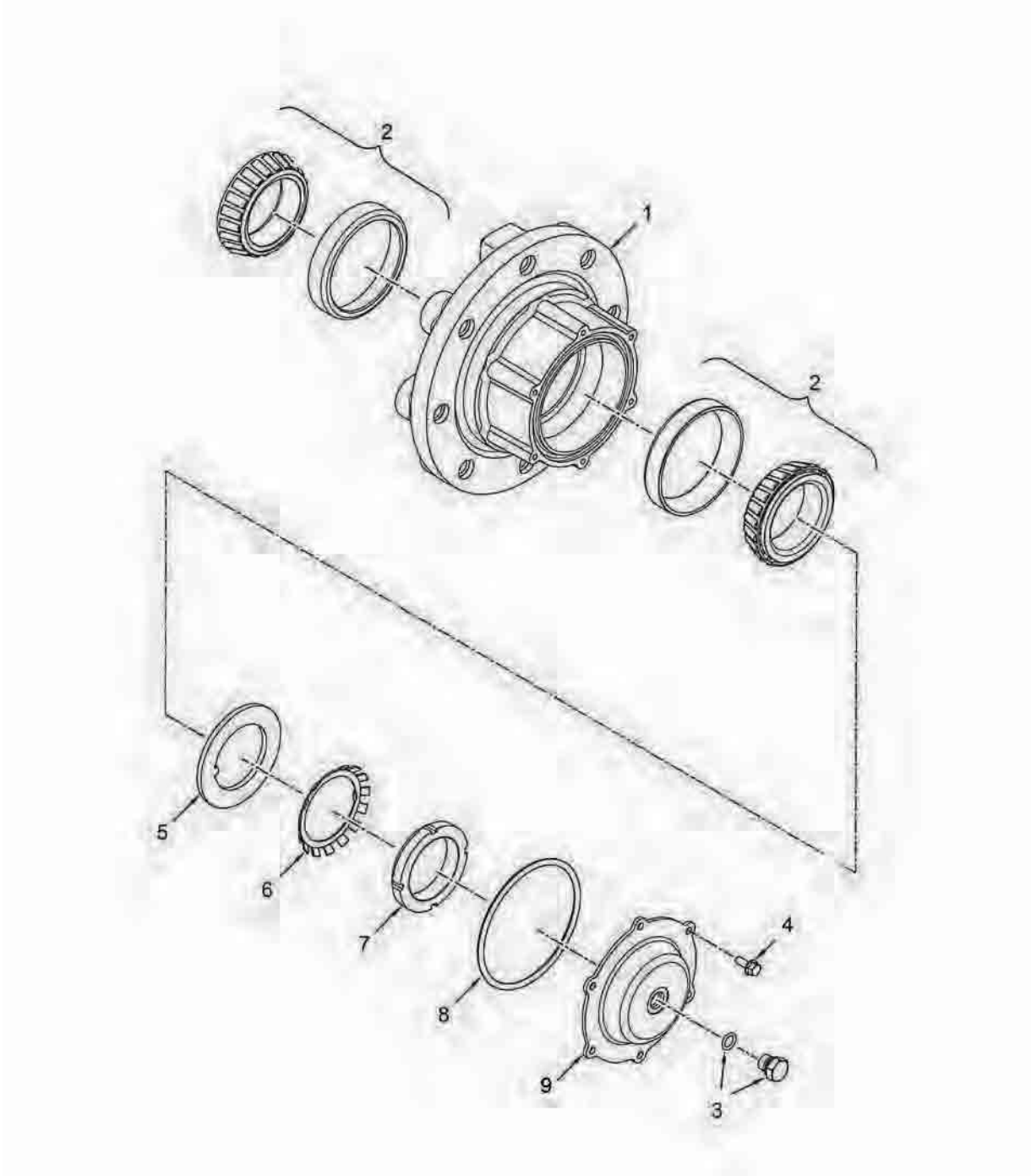


FIGURE 9

HUB MID-ROLLER

REF #	PART #	DESCRIPTION	QTY
1	94192	HUB, MID-ROLLER	1
2	94217	BEARING SERVICE SET, MID-ROLLER	2
3	94191	PLUG, HEX M14	1
4	94216	BOLT HEX, FLANGE M6 X 16 CL 10.9	6
5	94211	WASHER, TONGUE	1
6	94212	WASHER, LOCK	1
7	94213	NUT, LOCK	1
8	94218	O-RING	1
9	94220	COVER, IDLER HUB, FORMED	1
*	94208	BEARING LOCKNUT SOCKET TOOL	1
*	94207	LOCK WASHER TAB BENDER TOOL	1

FIGURE 10

STRAIGHT PINS - FITMENT KIT

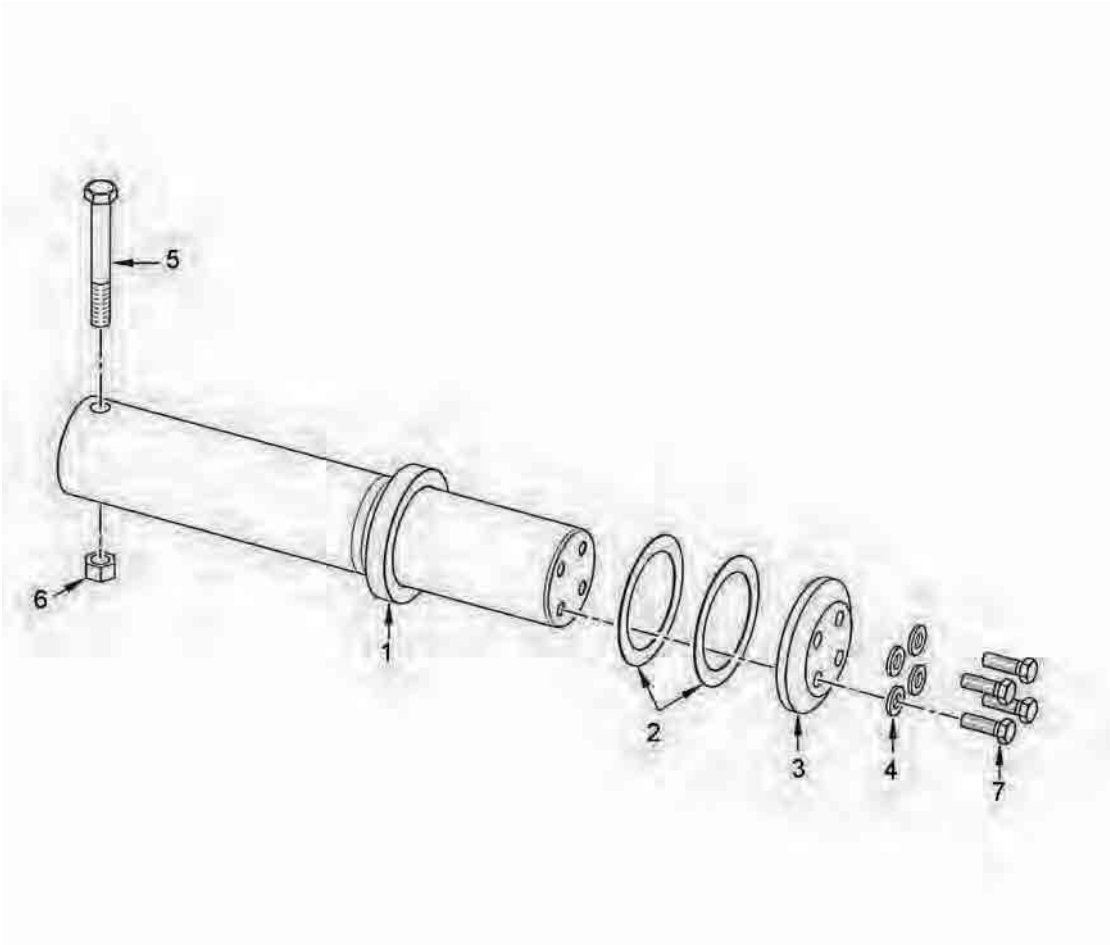


FIGURE 10

STRAIGHT PINS - FITMENT KIT

REF #	PART #	DESCRIPTION	QTY
1	94312	PIN, MAIN	1
2	94313	WASHER, THRUST 140MM	2
3	94314	CAP, END 140MM	1
4	94124	WASHER, FLAT, 21.4 X 42 X 5	4
5	94315	BOLT HEX, 1-8 UNC X 8 G8	1
6	94316	NUT LOCK, 1-8 UNC	1
7	94423	BOLT HEX, M20 X 60 CL 10.9	4

FIGURE 11

STABILIZER ASSEMBLY

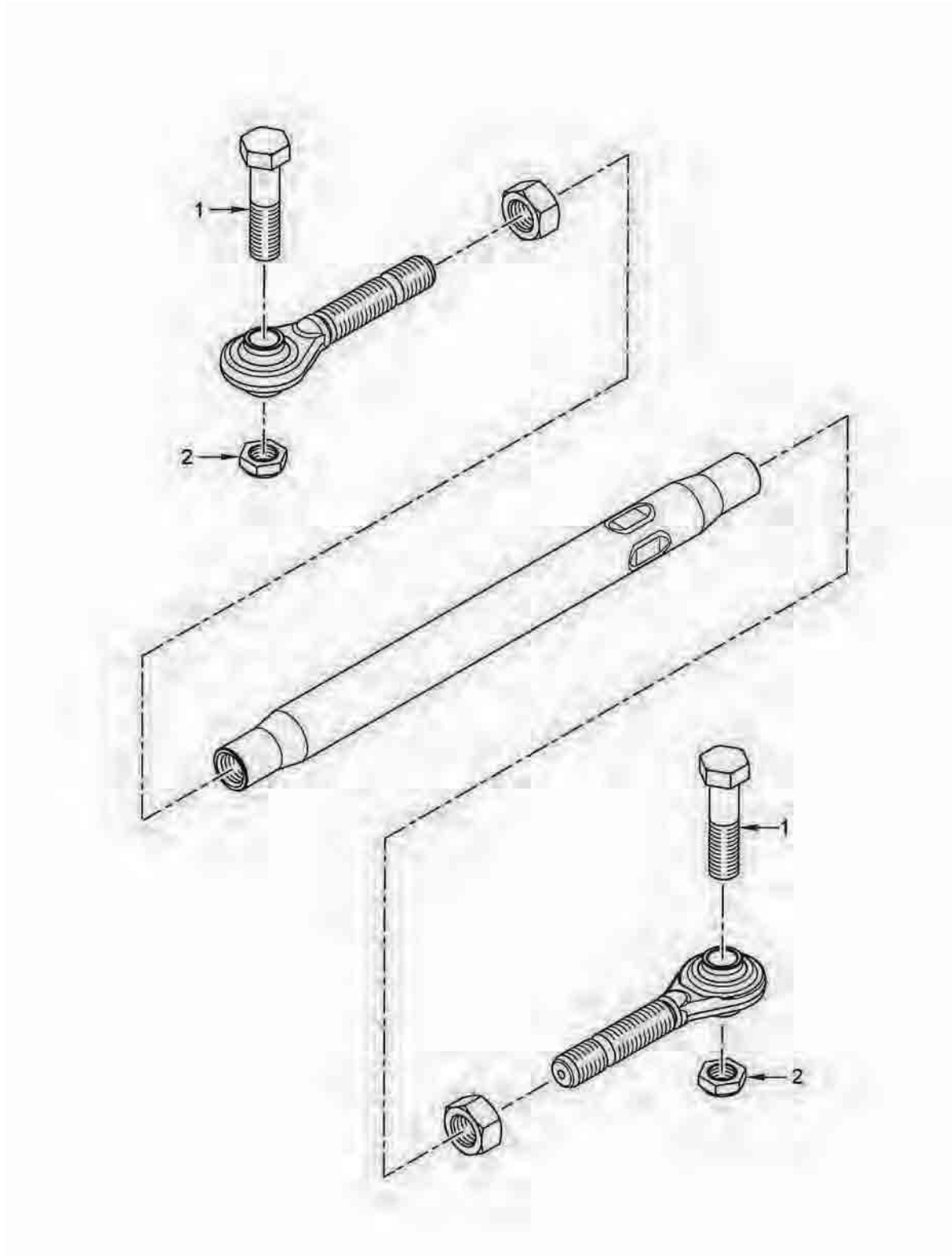


FIGURE 11

STABILIZER ASSEMBLY

REF #	PART #	DESCRIPTION	QTY
*	92352	STABILIZER ASSEMBLY, 24	1
1	94317	BOLT HEX, 4 X 1-14 UNC G8	2
2	94318	NUT JAM, 1-14 UNC G8	2

FIGURE 12
HDBO2XTA HEAVY TANDEM OPTION

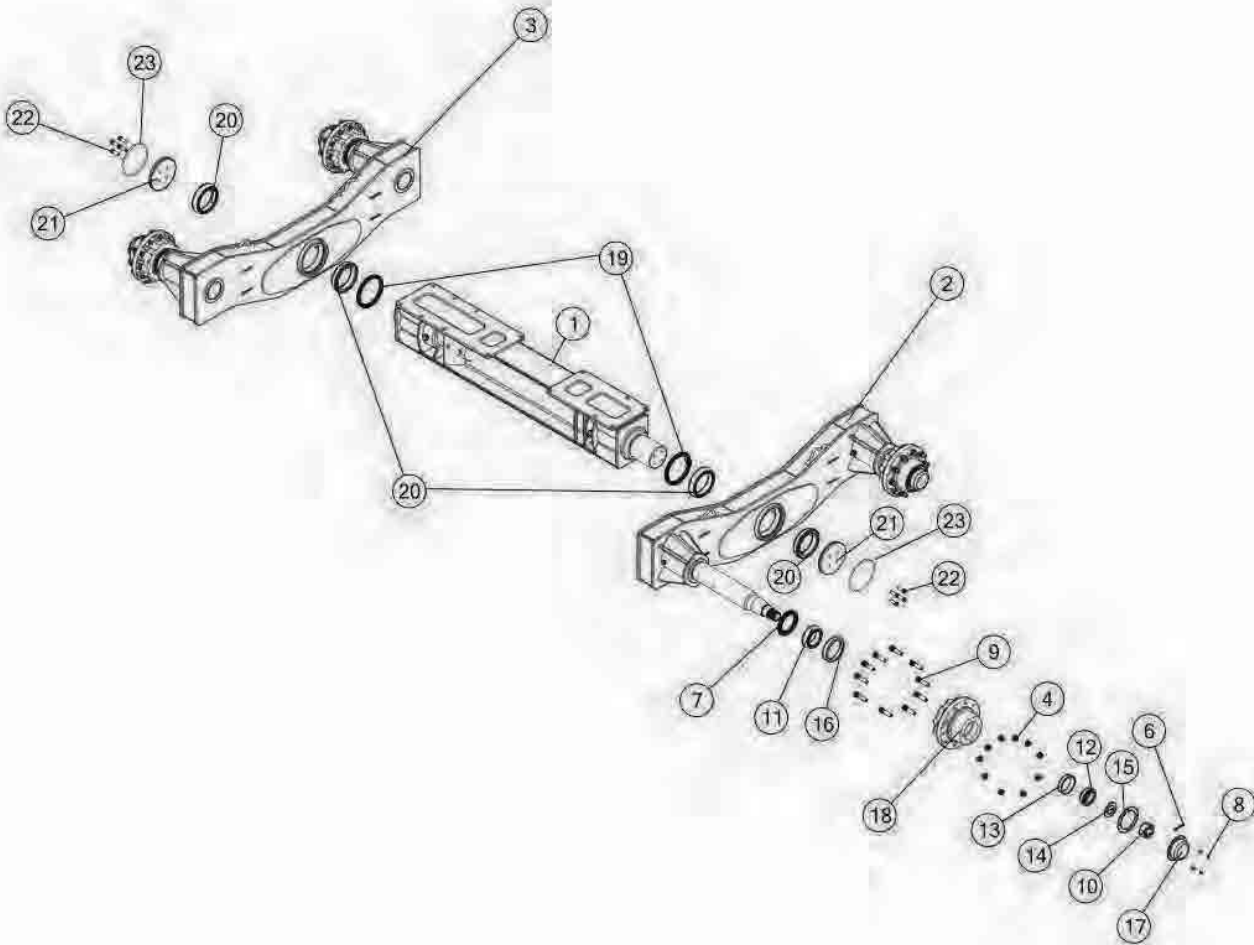


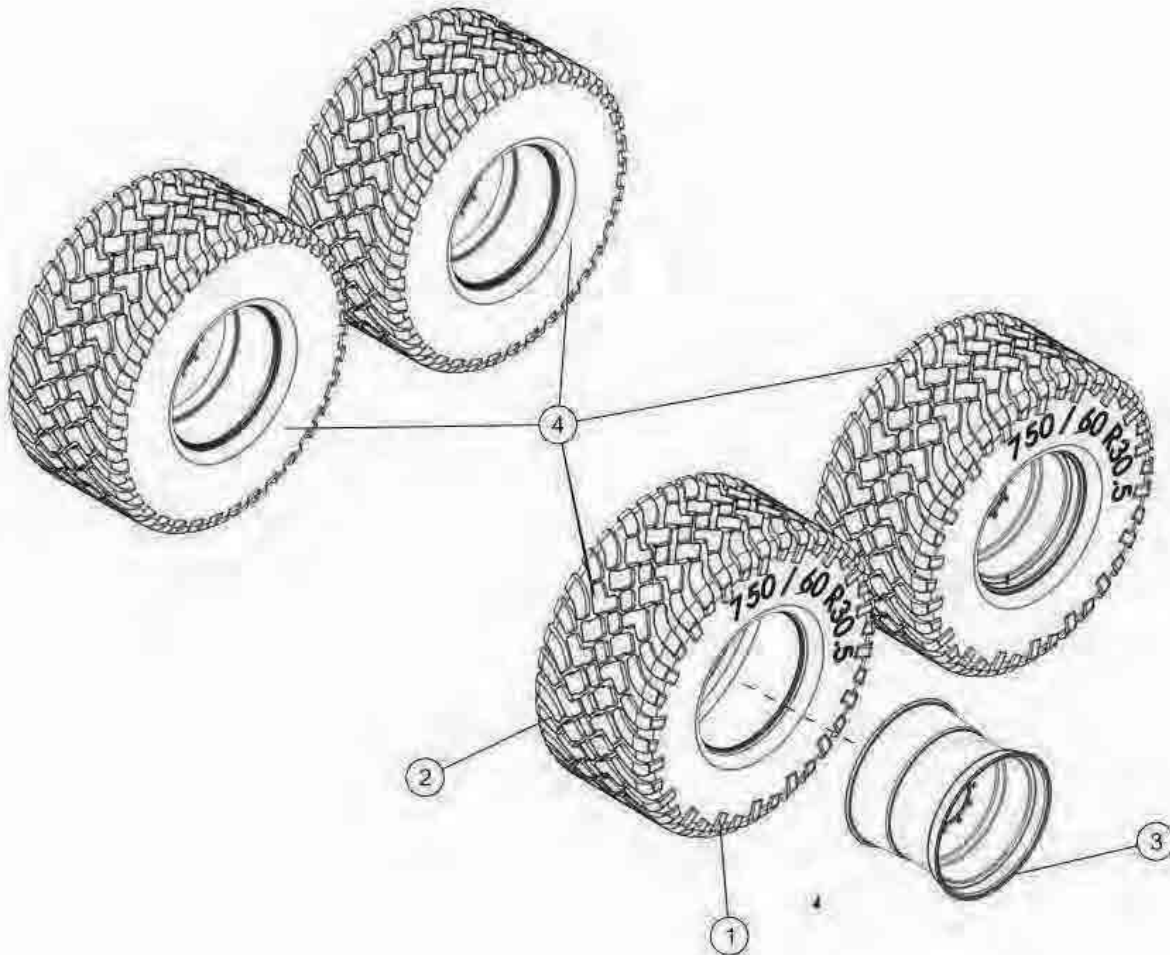
FIGURE 12

HDBO2XTA HEAVY TANDEM OPTION

REF #	PART #	DESCRIPTION	QTY
1	99447	AXLE BEAM	1
2	99102	OSCILLATING TANDEM AXLE, LH, 5.5 IN SPINDLE	1
3	98627	OSCILLATING TANDEM AXLE, RH, 5.5 IN SPINDLE	1
4	8306	LUG NUT	40
5	98675	SPINDLE, 5-1/2 X 31	4
6	YPEX12350	EXPANSION PIN, 3/8 X 3-1/2	4
7	HS103605	SEAL	4
8	YBHH10020	BOLT, 5/16 X 1/2 GR 5	16
9	YBSD88100	BOLT STUD, M22-1.5 X 100	40
10	YNSL48005	NUT, SLOT, 2-1/2-12, NA, G2, NF	4
11	HS103603	BEARING CONE	4
12	HS103604	BEARING CONE	4
13	HS103601	BEARING CUP	4
14	HS103609	WASHER	4
15	HS103607	GASKET, HUB CAP	4
16	HS103600	BEARING CUP	4
17	HS103606	HUB CAP	4
18	98686	HUB	4
19	99005	SEAL	2
20	99028	TAPER BEARING, 7	4
21	99014	SPINDLE CAP	2
22	YBHH20038	BOLT, 5/8-18 X 2-1/4 GR 5 FULL THREAD, FINE THRD	8
23	HS103610	O RING, 3/16 X 10-1/8	2

FIGURE 13

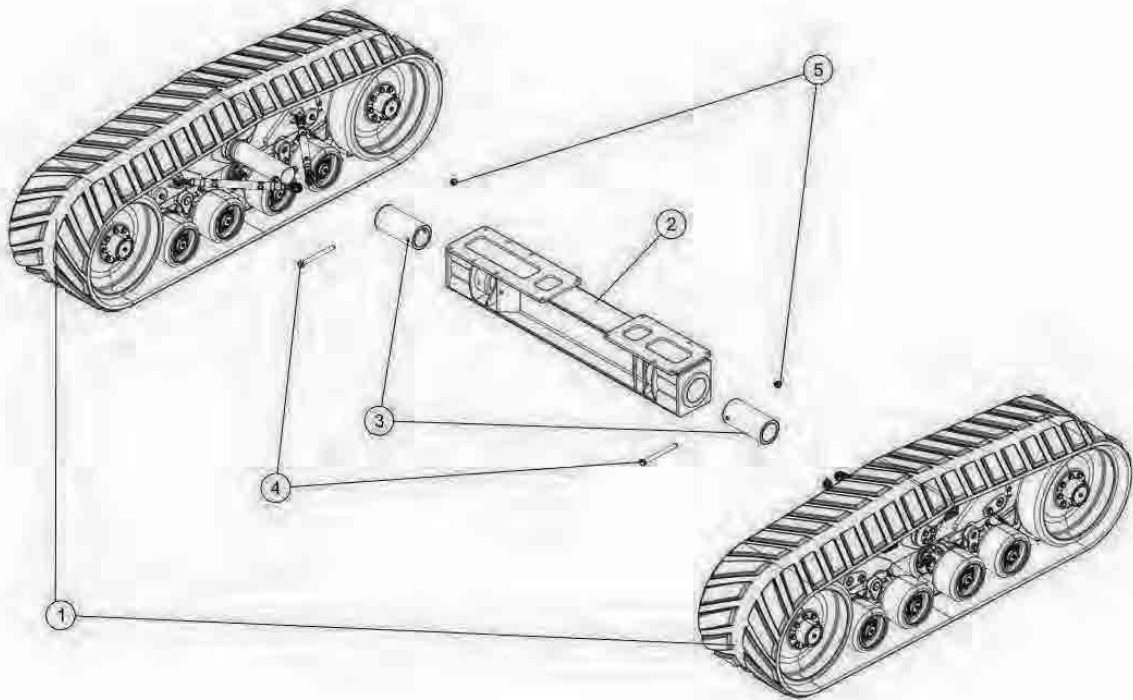
TWP75010S (4) 750/60 X 30.5 TIRE/RIMS OPTION



REF #	PART #	DESCRIPTION	QTY
1	72437	VALVE STEM, 1.25" HD	4
2	97404	TIRE, 750/60R30.5	4
3	HS103510	WHEEL, 30.5 X 24.00 10 BOLT DARK GRAY	4
4	HS103509	ASSEMBLY, WHEEL AND TIRE	4

FIGURE 14

TRACKS FOR 9230 LOADMASTER 2X OPTION



REF #	PART #	DESCRIPTION	QTY
1	92355	COMPLETE AXLE SET	1
2	99447	AXLE BEAM	1
3	99455	TRACK BUSHING	2
4	YBHH32120	BOLT, HEX, 1-8 X 12, G5, ZC	2
5	YNNY32005	NUT HEX, NYLON LOCKNUT, 1	2

FIGURE 15

HDBOSC30 SCALE OPT LM 2X (FACTORY INSTALL)

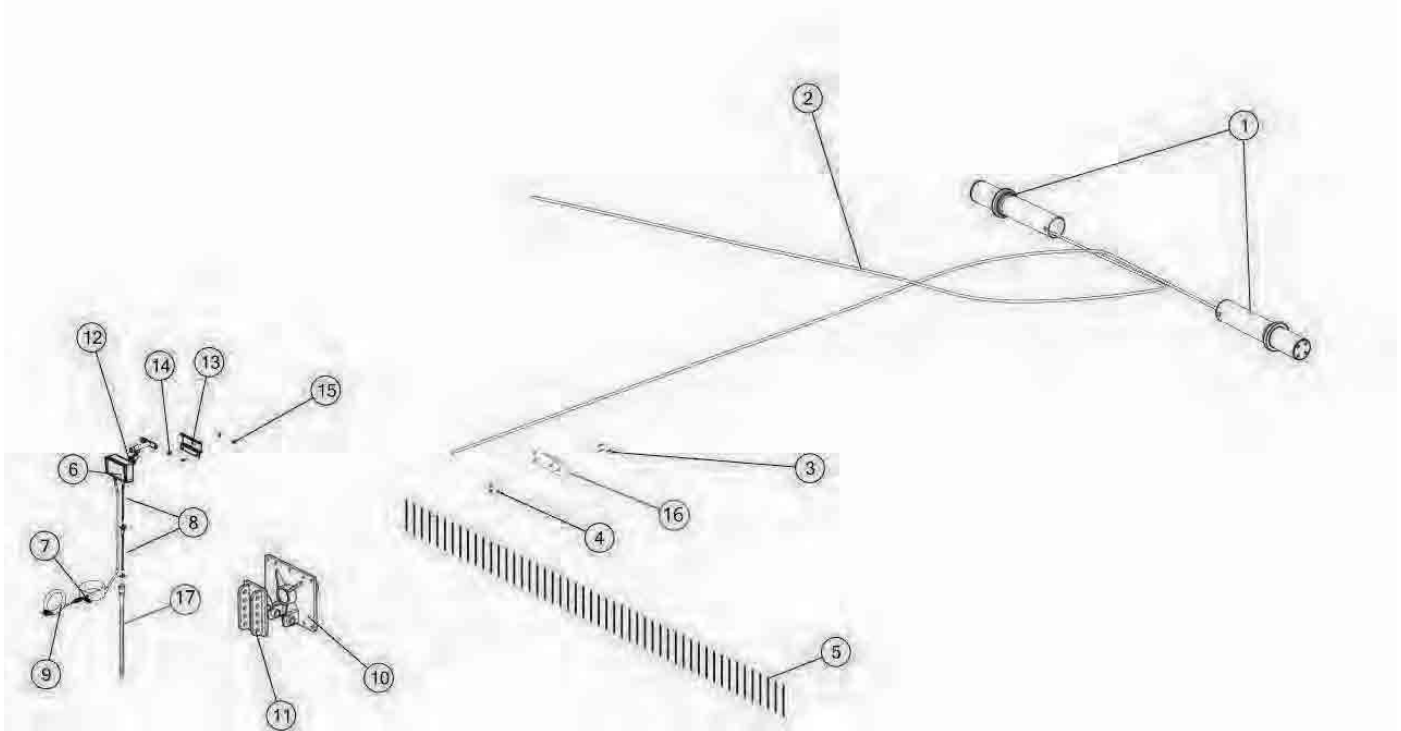


FIGURE 15

HDBOSC30 SCALE OPT LM 2X (FACTORY INSTALL)

REF #	PART #	DESCRIPTION	QTY
1	96411	LOAD CELL, TRACK	2
2	96412	WIRE HARNESS, LOAD CELL	2
3	YSPP62100	PPHMS, #8-32 X 1.00	4
4	YNNY62005	NUT, HEX, #8-32, LKNY, G2, ZC	4
5	CIZT103	ZIPTIE, 8.50 X .14 X .05	50
6	TS339	SCALE DISPLAY	1
7	92356	ELECTRIC HARNESS, SCALE	1
8	TS338	ELECTRIC HARNESS, JUNCTION BOX	2
9	59107	CABLE, POWER	1
10	HS101719	HITCH MOUNT	1
11	95941	HITCH MOUNT	1
12	TFM105	MOUNT, CTRL CONSOLE, RAM, TFM	1
13	HS103145	RAM MOUNT SCALE BRACKET	1
14	YBFB08075	BOLT FLG, 1/4 X 3/4 G5	2
15	YNFG08010	NUT FLG, 1/4 GF	2
16	HS102871	JUNCTION BLOCK	1
17	HS102854	ELECTRIC HARNESS, DISPLAY	1