

# **H&S** PARTS BOOK

# **S3143 MANURE SPREADER**



Revision #07  
Starting Ser. #911MS43010

HSMFG0719

PART#72639

Manufactured by  
**H&S MANUFACTURING CO., INC.**  
2608 S. HUME AVE. MARSHFIELD, WI 54449  
(715) 387-3414 | [hsmfgco.com](http://hsmfgco.com)



# CONTENTS

Instructions for Ordering Parts - About Improvements . . . . .	1
Figure 1 - Beater and Pan Assembly. . . . .	2-3
Figure 2 - Hub,Spindle and Box Parts. . . . .	4-7
Figure 3 - Front Shield and Drive Assembly. . . . .	8-11
Figure 4 - Back Shields and Drive Assembly. . . . .	12-15
Figure 5 - Hydraulic Endgate Assembly. . . . .	16-17
Figure 6 - Apron Chain Assembly. . . . .	18-19
Figure 7 - Optional Hydraulic Drive Assembly . . . . .	20-21
Figure 8 - Worm Gearbox Assembly. . . . .	22-23
Figure 9 - Bevel Gearbox . . . . .	24-25
Figure 10 - Hydraulic Cylinder. . . . .	26-27
Figure 11 - PTO Assembly. . . . .	28-29
Figure 12 - PTO Assembly (1000RPM) . . . . .	30-31
Figure 13 - Optional Second Beater . . . . .	32-35
Figure 14 - Optional Electric Control for Hydraulic Drive. . . . .	36-37
Figure 15 - Electric Control . . . . .	38-39
Figure 16 - Optional Light Kit . . . . .	40-41
Parts Notes . . . . .	42

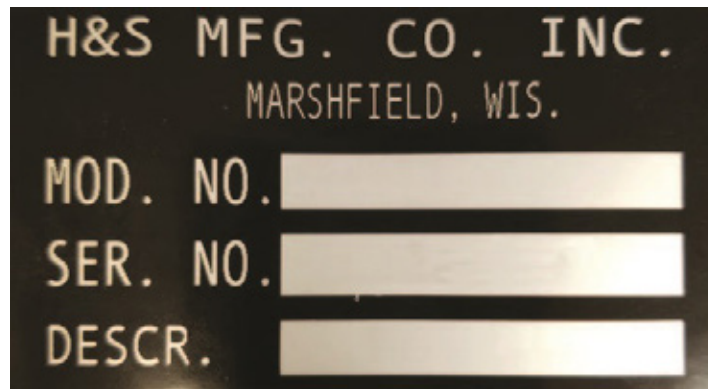
# **INSTRUCTIONS FOR ORDERING PARTS**

All service parts should be ordered through your authorized H&S dealer. He will be able to give you faster service if you will provide them with the following:

1. Model & Serial Number - Both can be located on the front PTO bearing support mount.
2. All references to left or right apply to the machine as viewed from the rear.
3. Parts should not be ordered from illustration only. Please order complete part number.
4. If your dealer has to order parts - give shipping instructions:

VIA truck - large pieces (please specify local truck lines)

VIA United Parcel Service (include full address)



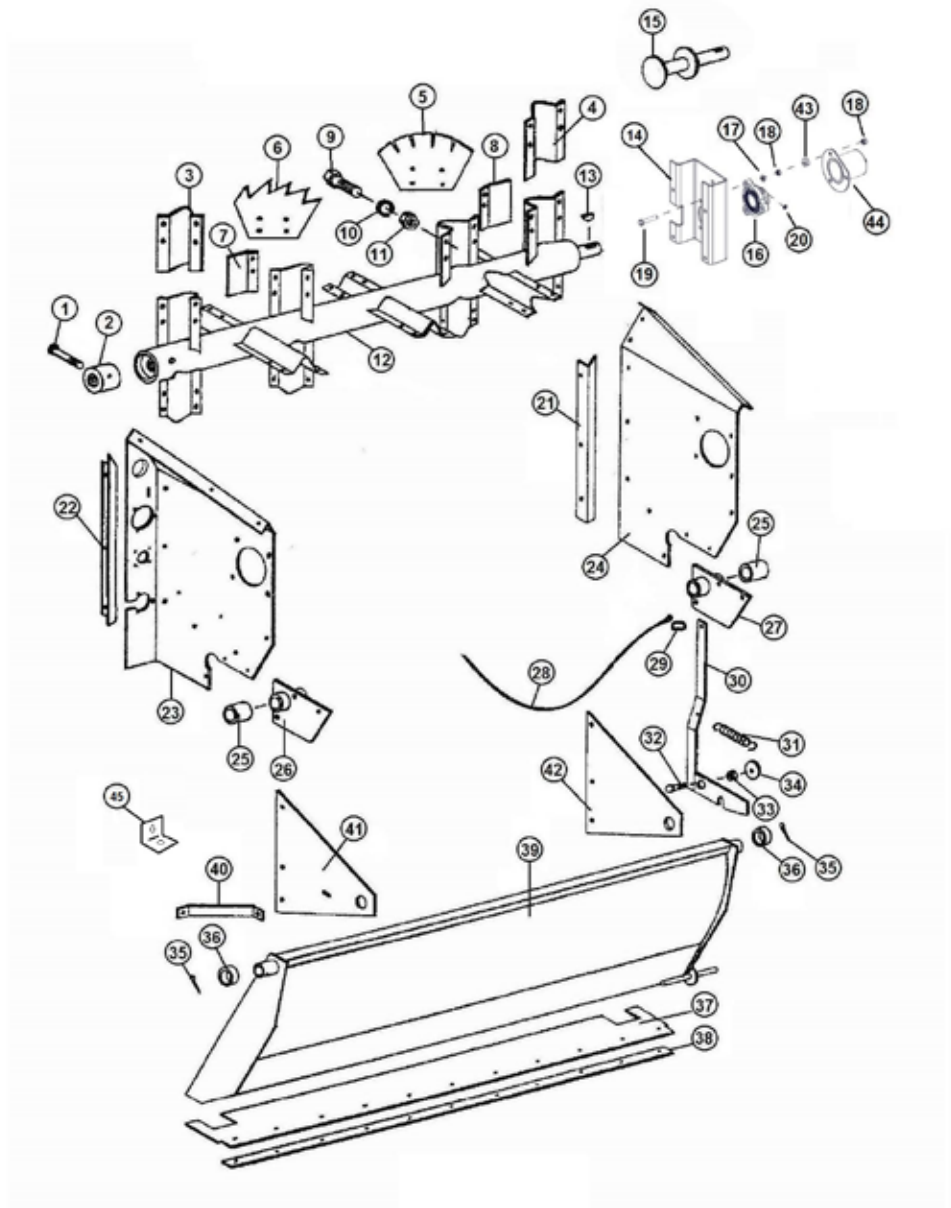
PLEASE RECORD NUMBERS FOR YOUR UNIT FOR QUICK REFERENCE

## **ABOUT IMPROVEMENTS**

H&S IS CONTINUALLY STRIVING TO IMPROVE ITS PRODUCTS

We must, therefore, reserve the right to make improvements or changes whenever it becomes practical to do so, without incurring any obligation to make changes or additions to the equipment previously sold.

# FIGURE 1 BEATER & PAN ASSEMBLY



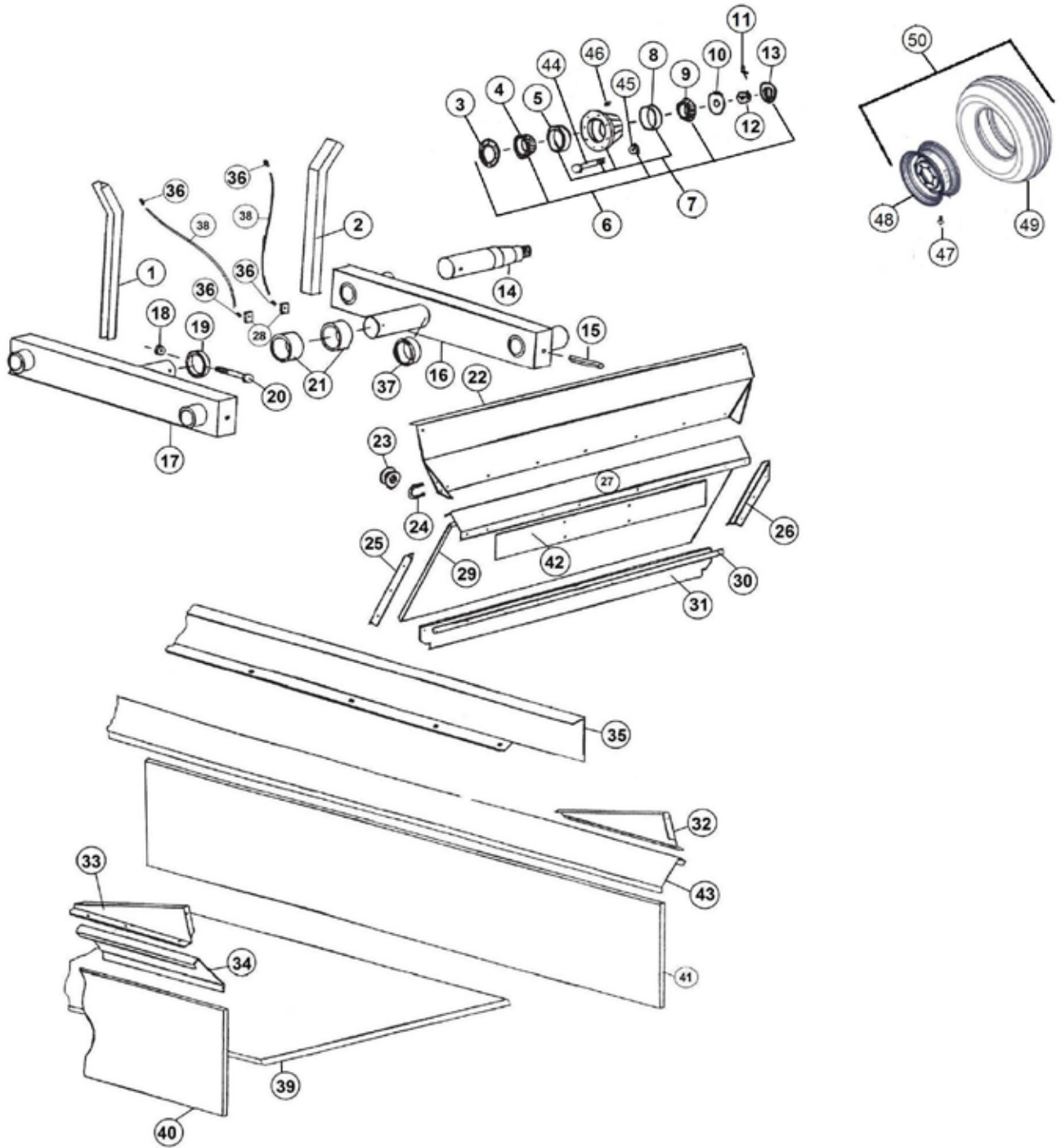
# FIGURE 1

## BEATER & PAN ASSEMBLY

<u>ITEM</u>	<u>QTY</u>	<u>PART#</u>	<u>DESCRIPTION</u>
1	1	YBHH10130	BOLT HEX, 5/16 X 5 G5
2	1	23N2	SPLINED BEATER INSERT
3	6	23N3	BEATER BLADE HOLDER LH
4	8	23N4	BEATER BLADE HOLDER RH
5	6	23N276	BEATER BLADE - HARDENED
6	8	23N277	BEATER BLADE - HARDENED
7	1	23N7	BEATER BLADE WIPER LH
8	1	23N8	BEATER BLADE WIPER RH
9	56	YBHH16045	BOLT HEX, 1/2 X 1-1/4 G5
10	56	YWLO16005	WASHER LOCK , 1/2
11	56	YNTL16005	NUT HEX TOP LOCK, 1/2
12	1	81161	BEATER
13	1	5B9	WOODRUFF KEY
14	1	80794	BEATER SHAFT SUPPORT
15	1	80791	BEATER STUB SHAFT
16	1	80725	BEATER BEARING DUTY
17	3	YWFL12005	WASHER, 3/8
18	6	YNFG12006	HEX NUT, 3/8
19	3	YBFB12200	BOLT, 3/8 X 2
20	1	RG21	GREASE ZERK, 45
21	1	37N1	POLY HOLDDOWN RH SIDE
22	1	75596	POLY HOLDDOWN LH MAIN
23	1	43NW3	PANEL LH
24	1	37N4	PANEL RH
25	2	23N17	DRIVE SHAFT BUSHING
26	1	37N78	DRIVE SHAFT BRACKET LH
27	1	23N19	DRIVE SHAFT BRACKET RH
28	1	37N5	PAN TRIP ROPE
29	1	R31	CLIP
30	1	23N21	PAN TRIP LEVER
31	1	R27	SPRING
32	1	YBCR16010	BOLT CARRIAGE, 1/2 X 1-1/2 G5
33	1	23N23	TRIP LEVER SPACER WASHER
34	1	YWFL16005	WASHER FLAT, 1/2
35	2	YPCT06020	COTTER PIN, 3/16 X 2
36	2	F112	SPACER
37	1	23N24	PAN RUBBER FLAP
38	1	23N25	PAN STRAP
39	1	23N30	PAN
40	1	23N27	PAN SUPPORT BRACE
41	1	23N28	PAN SUPPORT LH
42	1	23N29	PAN SUPPORT RH
43	1	82944	SPACER
44	1	82910	BEARING COVER
45	1	23N26	PAN BRACE

# FIGURE 2

## HUB, SPINDLE & BOX PARTS

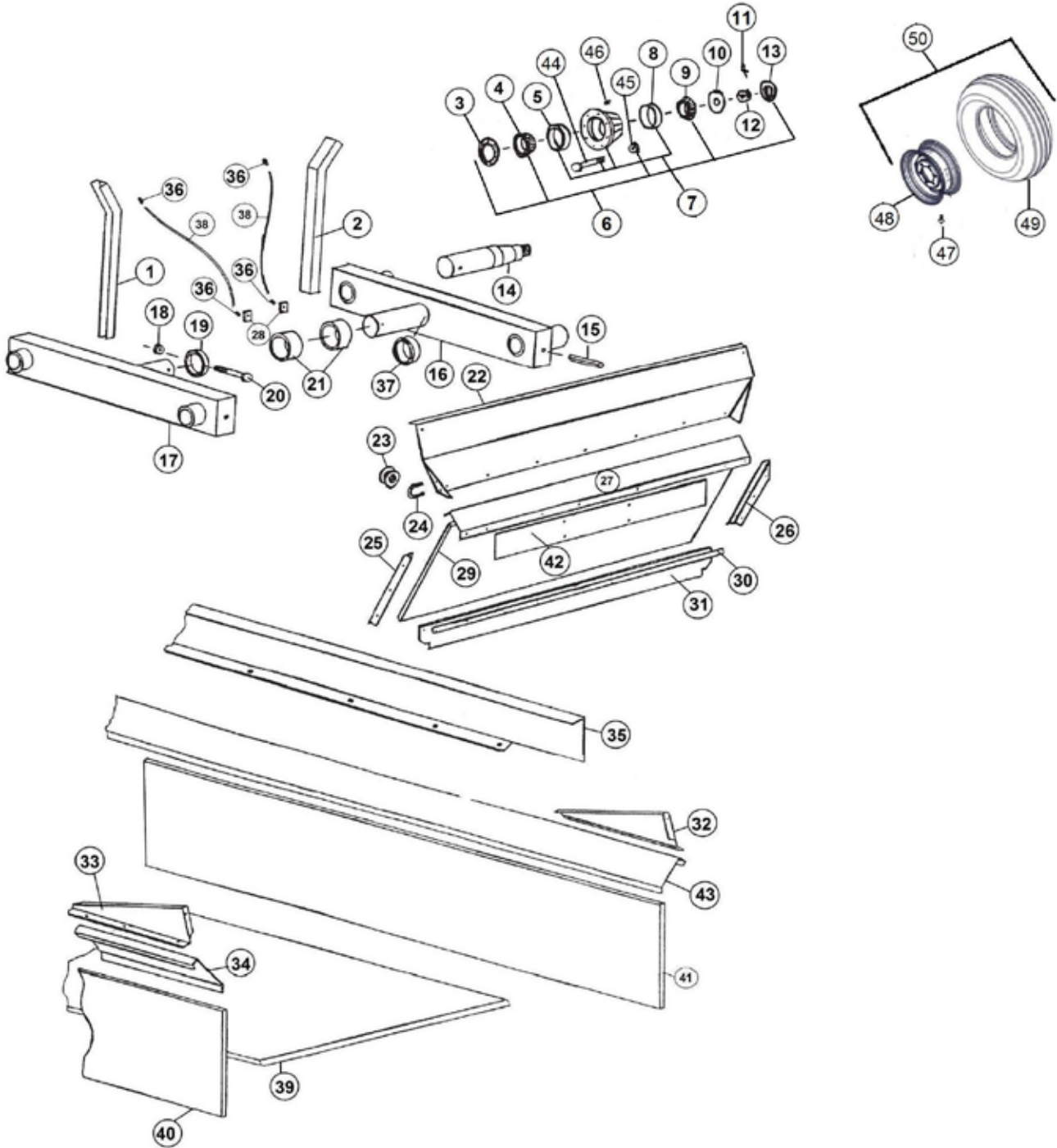


## FIGURE 2

### HUB, SPINDLE & BOX PARTS

<u>ITEM</u>	<u>QTY</u>	<u>PART#</u>	<u>DESCRIPTION</u>
1	1	37N6	SIDE STAKE RH
2	1	37N7	SIDE STAKE LH
3	11	B90	GREASE SEAL
4	1	B91	INNER BEARING
5	1	B91A	INNER RACE
6	1	26G4A	HUB COMPLETE
4	1	53403	HUB WITH RACES OUTER
8	1	B94A	RACE
9	1	B94	OUTER BEARING
10	1	YWFL28005	WASHER FLAT, 7/8
11	1	YPCT05020	COTTER PIN, 5/32 X 1-3/4
12	1	YNSL28005	NUT HEX, SLOTTED, 7/8
13	1	B2	HUB CAP
14	4	16SV203	SPINDLE
15	4	YPEX16020	EXPANSION PIN, 1/2 X 4
16	1	37N85	TANDEM AXLE LH
17	1	37N84	TANDEM AXLE RH
18	2	YNL16005	NUT HEX, TOP LOCK, 1/2
19	2	37N86	RING
20	2	YBHH16150	BOLT HEX, 1/2 X 4-3/4 G5
21	2	70150	POLY BUSHING
22	1	23N34	FRONT FLARE
23	1	F33	SIDE CABLE GUIDE
24	1	YBPU08005	PIPE U BOLT, 1/4 X 3/4
25	1	37N12	PLYWOOD ANGLE RH

# FIGURE 2 HUB, SPINDLE & BOX PARTS

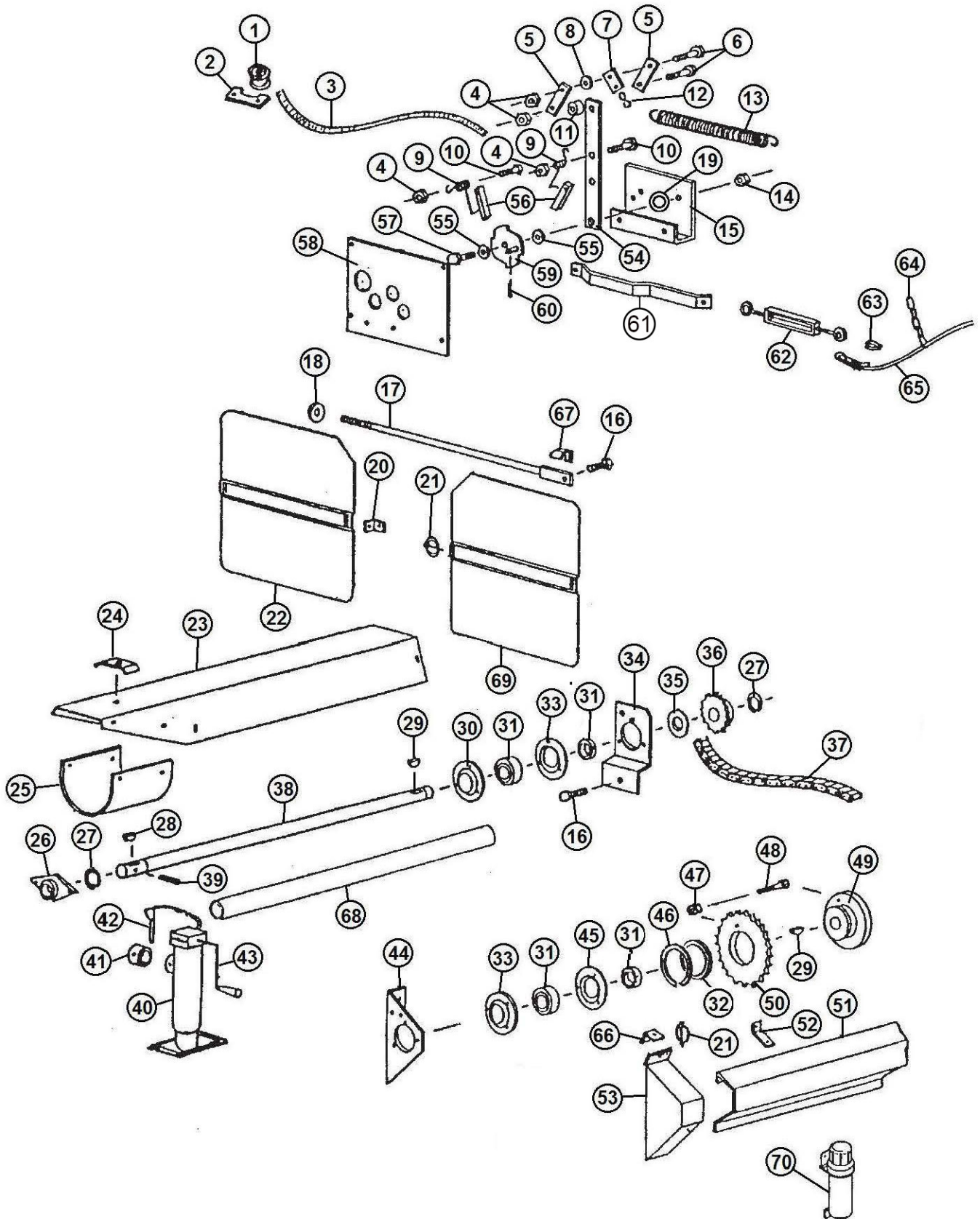


## FIGURE 2

### HUB, SPINDLE & BOX PARTS

<u>ITEM</u>	<u>QTY</u>	<u>PART#</u>	<u>DESCRIPTION</u>
26	1	37N13	PLYWOOD ANGLE LH
27	1	23N176	FRONT END BRACE
28	2	16V9	GREASE ZERK BRACKET
29	1	37N65A	FRONT GATE PLYWOOD W/FIBERGLASS
30	1	23N40	STRAP FOR RUBBER
31	1	23N41	FRONT GATE RUBBER
32	1	23N42	SPLASH GUARD LH
33	1	23N43	SPLASH GUARD RH
34	1	43N3	SIDE FLARE RH
35	1	43N1	SIDE EXTENSION LH
36	4	S47	GREASE LINE FITTING
37	2	70162	POLY BUSHING
38	2	31N43	GREASE LINE
39	1	37N81	SOLID POLY FLOOR
40	1	37N67A	BONDED POLY/PLYWOOD SIDE RH
41	1	37N68A	BONDED POLY/PLYWOOD SIDE LH
42	1	37N51	FRONT PANEL
43	1	43N4	SIDE FLARE LH
44	8	YBSD20010	BOLT STUD, 5/8 X 2-1/2 X 7/8 G8
45	8	YNWL20005	NUT WHEEL, 5/8 G5
46	2	BFR28	GREASE ZERK, 1/8 NPT
47	2	72436	VALVE STEM 1-1/2 RUBBER
48	2	12V36	WHEEL 16.1 X 14 8 BOLT (OFF-WHITE)
49	2	UR5	16.5 X 16.1 10 PLY IMPL TIRES
50	2	32353	16.5 X 16.1 ON 14 X 16.1, 8-BOLT

# FIGURE 3 FRONT SHIELD & DRIVE ASSEMBLY



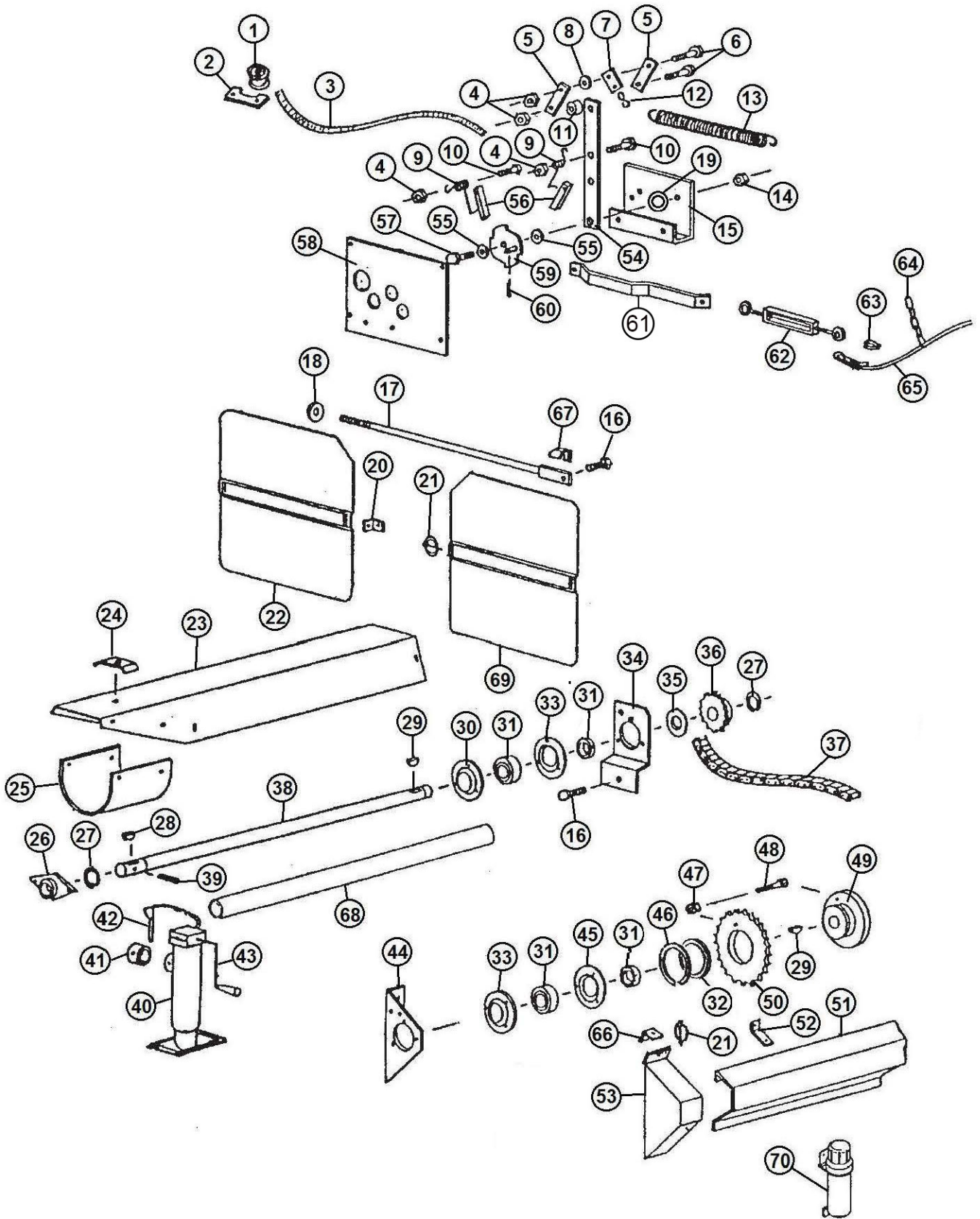
## FIGURE 3

### FRONT SHIELD & DRIVE ASSEMBLY

<u>ITEM</u>	<u>QTY</u>	<u>PART#</u>	<u>DESCRIPTION</u>
1	1	F33	CABLE
2	1	23N182	GUIDE BRACKET
3	1	77192	ROPE (15)
4	4	YNTH12005	NUT HEX, TOP LOCK, 3/8
5	2	23N184	BRACKET
6	2	YBHH12035	BOLT HEX, 3/8 X 1-1/4 G5
7	1	23N185	SPRING BRACKET
8	1	YWFL12005	WASHER FLAT, 3/8
9	2	23N186	DOG SPRING
10	1	YBHH12010	BOLT HEX, 3/8 X 1 G5
11	1	D107	SHIELD SPACER
12	1	X79	S-HOOK
13	1	23N187	SPRING
14	1	YNHX16005	NUT HEX , 1/2
15	1	23N188	SHIFTER BRACKET
16	2	YBHH16045	BOLT HEX, 1/2 X 1-1/4 G5
17	1	23N63	TIGHTENER ROD
18	1	F129	WASHER
19	1	31N51	SHIFTER SPACER WASHER
20	1	F92	SHIELD BRACKET
21	2	S122	LYNCH PIN W/LANDYARD
22	1	23N305	FRONT SHIELD
23	1	23N66	SHIELD
24	1	23N67	HOSE BRACKET
*	1	HE42	HYDRAULIC DRIVE BRACKET
25	1	F54	SHIELD
26	1	12N29	BEARING
27	2	F73	SNAP RING
28	1	5B10	KEY, 1/4 X 1
29	1	5B9	KEY, 3/8 X 1-1/4
30	1	F114	FLANGE 1-1/4 STRAIGHT ZERK
31	4	12N122	BEARING W/LOCK COLLAR
32	1	C112G01	SHEAR HUB SPACER
33	2	F14	FLANGE
34	1	23N68	FRONT ADJUSTMENT PLATE
35	1	23N69	SPACER

**\*MEANS NOT SHOWN**

# FIGURE 3 FRONT SHIELD & DRIVE ASSEMBLY



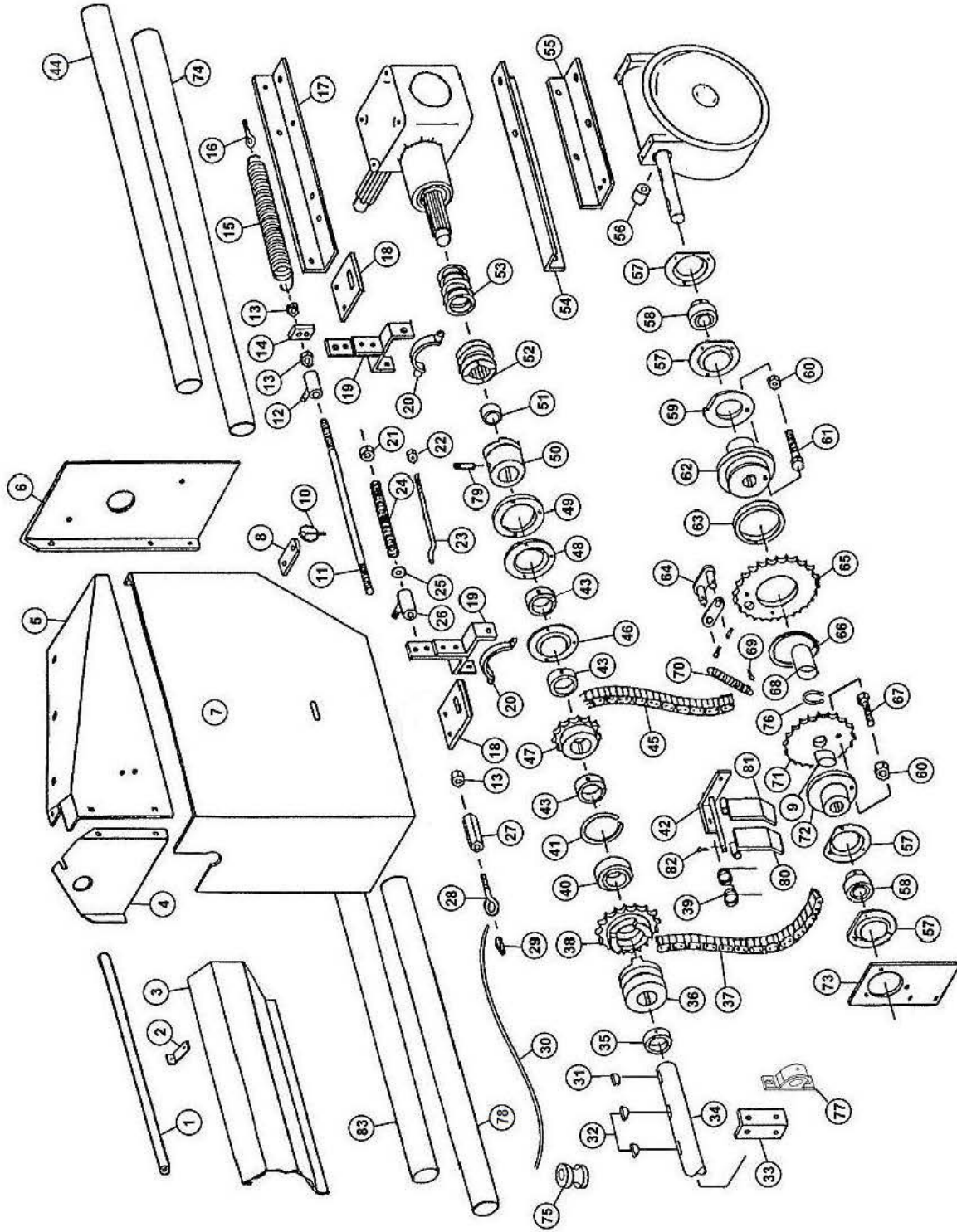
## FIGURE 3

### FRONT SHIELD & DRIVE ASSEMBLY

<u>ITEM</u>	<u>QTY</u>	<u>PART#</u>	<u>DESCRIPTION</u>
36	1	23N70	SPROCKET (25T)
*	1	37N72	SPROCKET (16T) (OPTIONAL 1000 RPM)
37	1	23N71	ROLLER CHAIN (#60, 122P)
38	1	23N72	FRONT SHAFT
39	1	YPEX10020	EXPANSION PIN, 5/16 X 2-1/4
40	1	27N49	JACK
*	1	12N120	JACK GEAR REPAIR KIT
41	1	27N51	JACK MOUNT
42	1	27N50	JACK PIN
43	1	12N119	HANDLE
*	1	12N118	REPLACEMENT BEARING
44	1	23N74	BEARING PLATE
45	1	F114A	FLANGE
46	1	23N189	SNAP RING
47	1	YNTL12005	NUT HEX, TOP LOCK, 3/8
48	1	YBHH12025	BOLT HEX, 3/8 X 1-1/2 G5
49	1	45N71	SHEAR HUB
50	1	C1MS01	SPROCKET (60T A 30T)
51	1	37N27	SIDE SHIELD
52	1	23N79	BRACKET
53	1	23N80	SHIELD
54	1	23N192	FRONT SHIFTER ARM
55	2	YWFL16005	WASHER FLAT ,1/2
56	2	23N193	DOG
57	1	YBHH16055	BOLT HEX, 1/2 X 1-3/4 G5
58	1	23N195	SHIFTER PANEL
59	1	23N196	SPEED SELECTOR
60	1	YPCT04005	COTTER PIN, 1/8 X 1
61	1	23N197	SHIFTER ARM
62	1	F84	TURNBUCKLE
63	1	ES14	THIMBLE
64	1	37N64	CABLE CHAIN
65	11	37N53	CABLE
66	1	F92	SHIELD BRACKET
67	1	23N278	SPACER
68	1	37N74	FRONT SHAFT GUARD
69	1	23N30	FRONT SHIELD LH
70	1	S522	MANUAL HOLDER

\*MEANS NOT SHOWN

# FIGURE 4 BACK SHIELDS & DRIVE ASSEMBLY



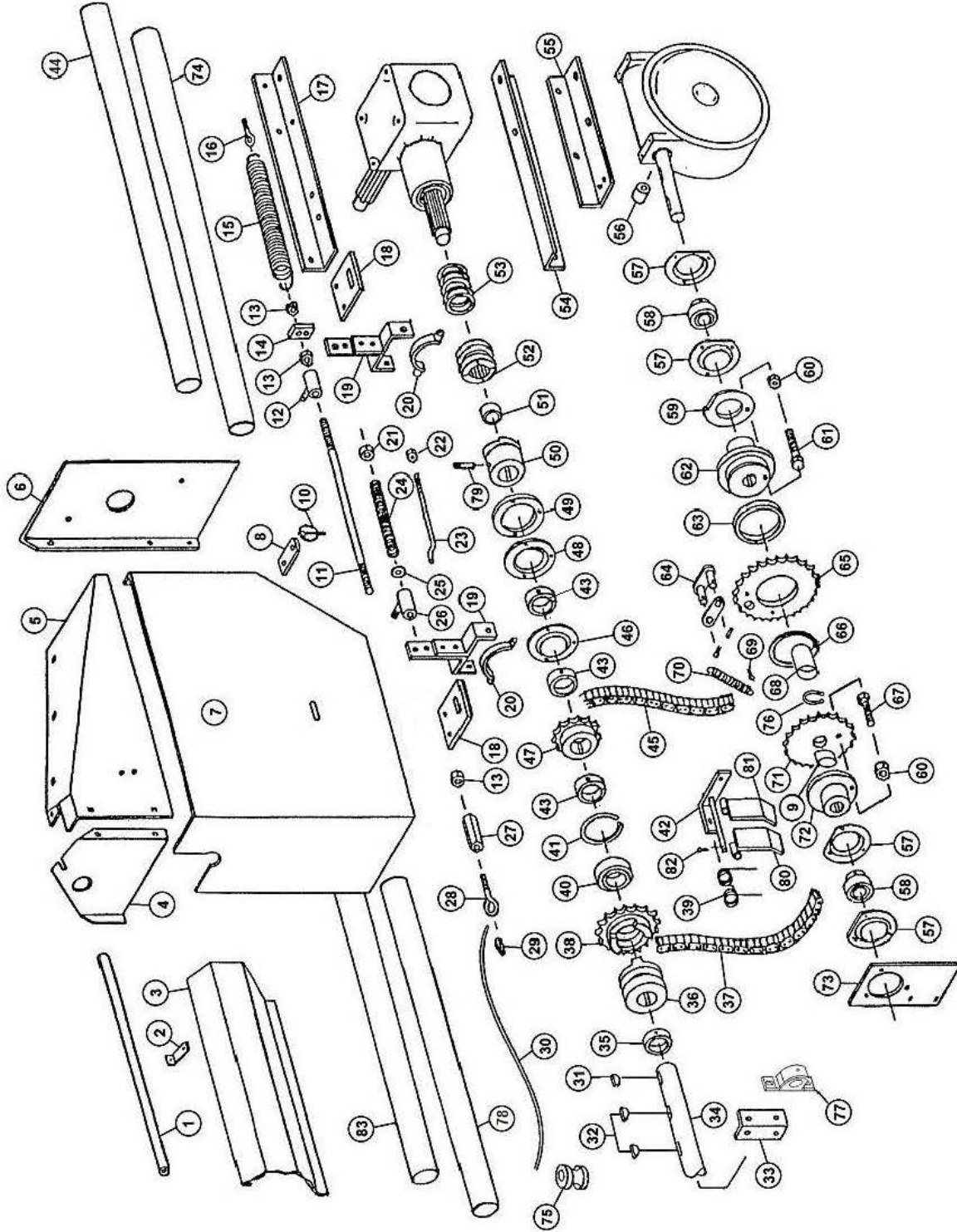
## FIGURE 4

### BACK SHIELDS & DRIVE ASSEMBLY

<u>ITEM</u>	<u>QTY</u>	<u>PART#</u>	<u>DESCRIPTION</u>
1	1	23N200	CABLE GUARD
2	1	23N79	SIDE SHIELD BRACKET
3	1	37N54	SIDE SHIELD
4	1	37N55	SHIELD
5	1	37N56	BACK SHIELD TOP
6	1	37N57	BACK SHIELD
7	1	23N204	COVER
8	1	23N96	SHIELD BRACKET
9	1	56027	BUSHING
10	1	S122	LYNCH PIN /W LANDYARD
11	1	23N205	CLUTCH ROD
12	1	23N206	SHIFTING ROD BRACKET
13	3	YNHX12005	NUT HEX, 3/8
14	1	23N207	SPRING BRACKET
15	1	K103	SPRING
16	1	YBTE08005	TURNED EYE BOLT, 1/4 X 1 FULL
17	1	23N85	TOP ANGLE
18	2	23N86	SHIFTER BRACKET
19	2	D57	SHIFTER LEVER
20	2	23N208	YOKE W/ ZERK
21	1	23N209	COLLAR
22	1	YNTL08005	NUT HEX, TOP LOCK, 1/4
23	1	23N210	SHIFTING ROD
24	1	23N211	SPRING BRACKET
25	1	YWFL12005	WASHER FLAT, 3/8
26	1	23N206	ROD BRACKET
27	1	YNCO12005	NUT HEX COUPLING, 3/8 X 1-1/8
28	1	YBTE12005	TURNED EYE BOLT, 3/8 X 1
29	1	ES14	CABLE LOOP
30	1	37N53	CABLE
31	1	5B9	WOODRUFF KEY, 3/8 X 1-1/4
32	2	5B10	WOODRUFF KEY, 1/4 X 1
33	1	23N97	SIDE BEARING BRACKET
34	1	37N58	SIDE SHAFT
35	1	F6	COLLAR
36	1	23N215	THROW-OUT CLUTCH
37	1	23N93	CHAIN (#50, 60P)
38	1	23N216	CLUTCH SPROCKET
*	1	61138	CLUTCH SPROCKET
39	2	31N33	COMPLETE SPRING TIGHTENER
40	1	BFR525	BEARING
41	1	3G19	SNAP RING
42	1	31N36	TIGHTENER BRACKET

\*MEANS NOT SHOWN

# FIGURE 4 BACK SHIELDS & DRIVE ASSEMBLY



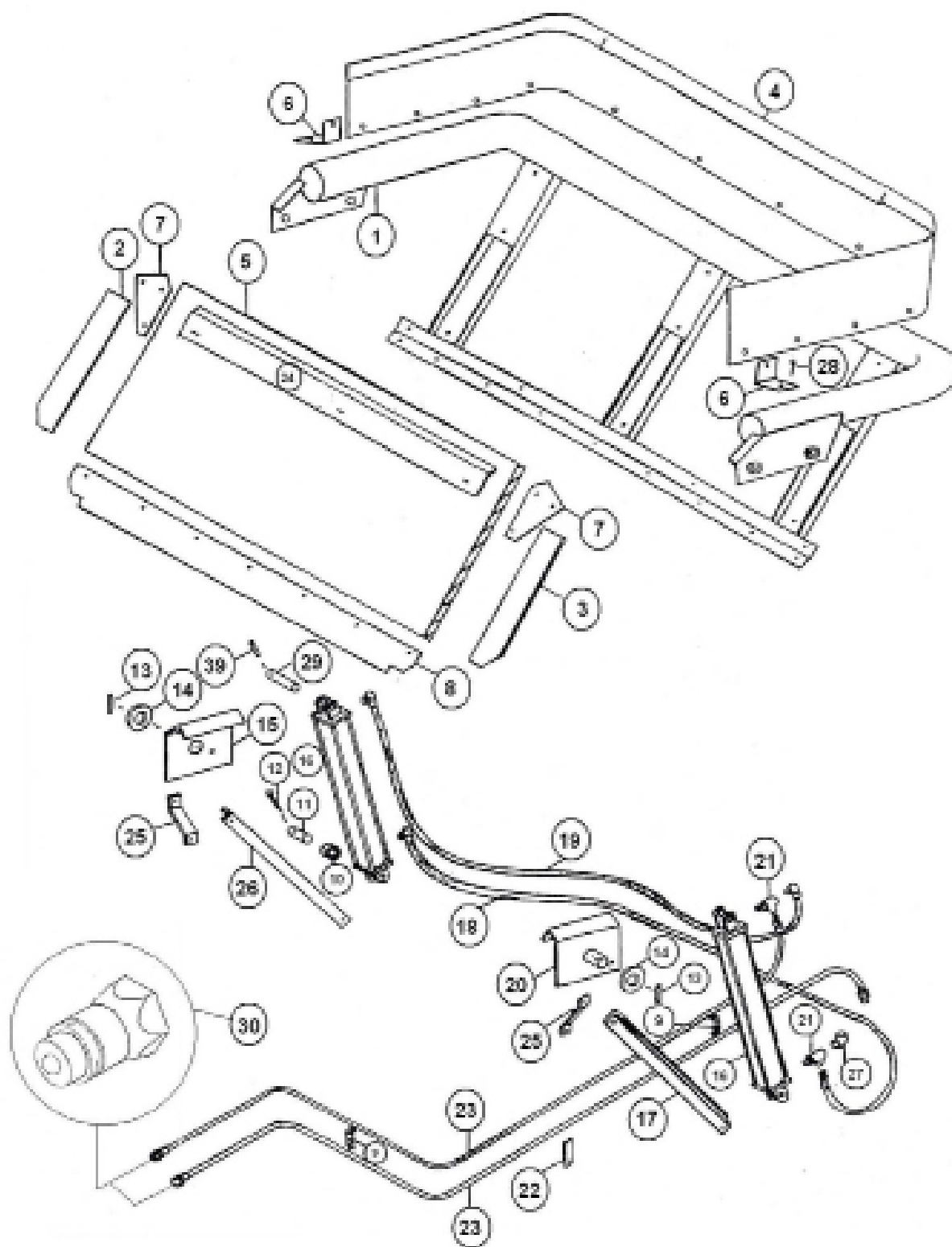
## FIGURE 4

### BACK SHIELDS & DRIVE ASSEMBLY

<u>ITEM</u>	<u>QTY</u>	<u>PART#</u>	<u>DESCRIPTION</u>
43	3	12N122	BEARING W/LOCK COLLAR 1-1/4
44	1	37N76	#4 SIDE SHAFT GUARD
45	1	23N93	CHAIN (#50 60P)
46	1	F114A	FLANGE
47	1	10R11	SPROCKET (13T)
48	1	F14	FLANGE
49	1	23N174	FLANGE SPACER
50	1	23N241	CLUTCH
51	1	D68	BRONZE BUSHING
52	1	23N90	CLUTCH
53	1	23N89	SPRING
54	1	23N88	BOTTOM ANGLE
55	1	23N95	WORM BOX HOLDER
56	1	23N94	SPACER
57	2	X85	FLANGE
58	2	23N221	BEARING W/SETSCREWS
59	1	23N222	SHEAR PLATE
60	2	YNTL08005	HEX NUT, TOP LOCK 1/4
61	1	YBHH08035	BOLT HEX 1/4 X 1-1/4 G5
62	1	23N224	SHEAR HUB
63	1	23N225	BRONZE BUSHING
64	1	60531	CONNECTOR LINK W/ PINS
*	1	74381	SPROCKET (50T A 30T)
65	1	23N226	SPROCKET W/BUSHING (50T A 30T)
66	1	23N227	SNAP RING
67	1	YBHH08035	BOLT HEX 1/4 X 1-1/4 G5
68	1	56029	SPACER
69	1	YPCT04005	COTTER PIN, 1/8 X 1
70	1	23N229	DOG SPRING
71	1	56026	SPROCKET (25T)
72	1	56025	SHEAR HUB
73	1	23N230	BEARING PANEL
74	1	37N77	#3 SIDE SHAFT GUARD
75	1	F33	CABLE GUIDE
76	1	56024	EXTERNAL SNAP RING, 1-1/2
77	1	12N36	PILLOW BLOCK BEARING
78	1	37N75	#1 SIDE SHAFT GUARD
79	1	YSFD12005	SCREW SOCKET HEAD, 3/8 X 3/4
80	1	31N34	TIGHTENER BAR LH
81	1	31N35	TIGHTENER BAR RH
82	1	YPCT04005	COTTER PIN, 1/8 X 1
*	1	X60	OFFSET LINK #50
*	1	X61	CONNECTOR LINK #50
*	1	31N38	CHAIN TIGHTENER ASSEMBLY
83	1	37N76	#2 SIDE SHAFT GUARD
*	1	56036	SPROCKET BUSHING ASSEMBLY (INCLUDES ITEM 71 & 9)

\*MEANS NOT SHOWN

# **FIGURE 5** **HYDRAULIC ENDGATE ASSEMBLY**



## FIGURE 5 HYDRAULIC ENDGATE ASSEMBLY

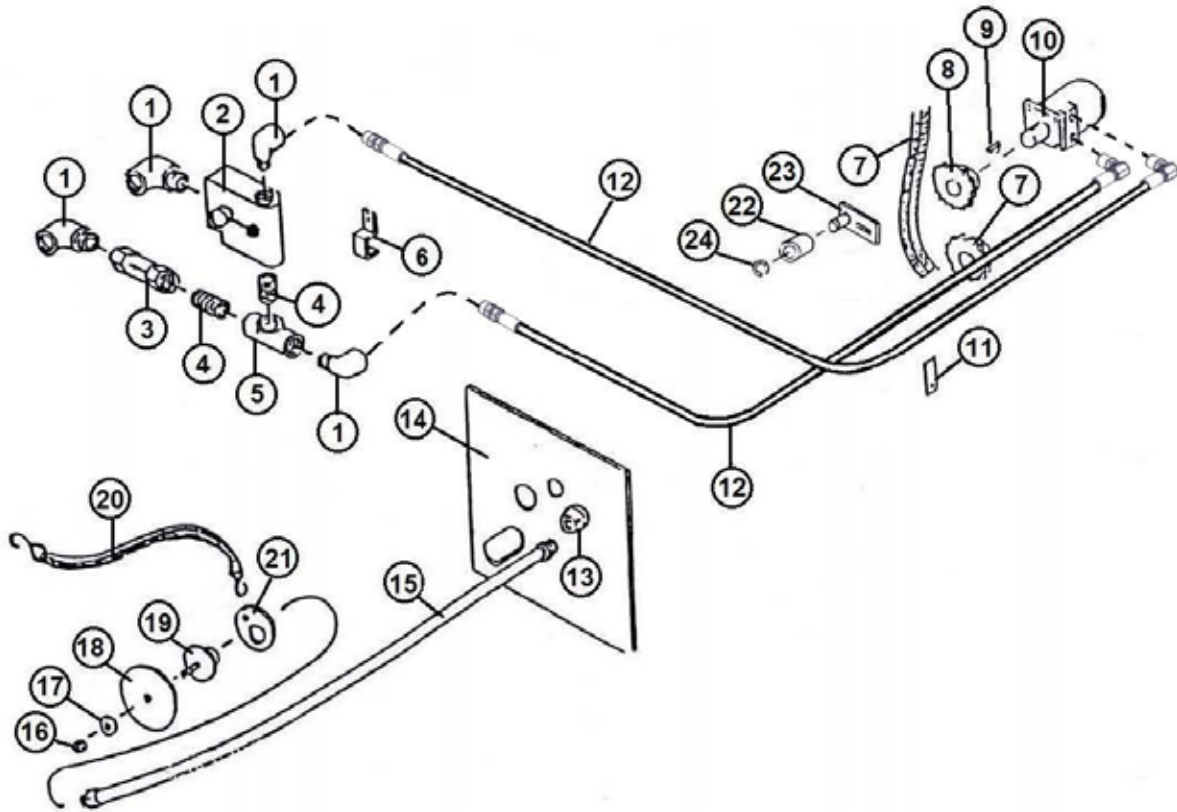
<u>ITEM</u>	<u>QTY</u>	<u>PART#</u>	<u>DESCRIPTION</u>
1	1	37N34	TAILGATE FRAME
2	1	37N35	SIDE RUBBER RH
3	1	37N36	SIDE RUBBER LH
4	1	43N5	BACK EXTENSION
5	1	37N69A	TAILGATE PLYWOOD W/FIBERGLASS
6	1	43N6	EXTENSION ANGLE
7	2	23N104	TAILGATE CORNER
8	1	23N105	BOTTOM RUBBER
9	2	23N67	HOSE BRACKET
10	1	K132	SPACER
11	1	23N107	CYLINDER PIN
12	1	YPCT07005	COTTER PIN, 7/32 X 2
13	2	YPEX10015	EXPANSION PIN, 5/16 X 1-3/4
14	2	23N109	SPACER
15	1	23N110	TAILGATE MOUNT RH
16	1	56015	HYDRAULIC CYLINDER
17	1	37N59	TAILGATE BRACE LH
18	2	37N60	HYD HOSE, 108
19	1	37N61	HYD HOSE, 152
20	1	23N115	TAILGATE MOUNT LH
21	2	23N116	TEE, 3/8
22	1	23N117	HOSE HOLDER
23	2	37N83	HYD HOSE, 6 X 328
24	1	23N163	TAILGATE POLY HOLD DOWN
25	2	23N232	TAILGATE BRACKET BRACE
26	1	37N62	TAILGATE BRACKET BRACE
27	1	23N234	FITTING, 90, 3/8NPT
28	1	12V3	SELF TAPPING BOLT
29	1	23N107	CYLINDER PIN
30	2	DWM205	MALE QUICK COUPLER

**\*MEANS NOT SHOWN**



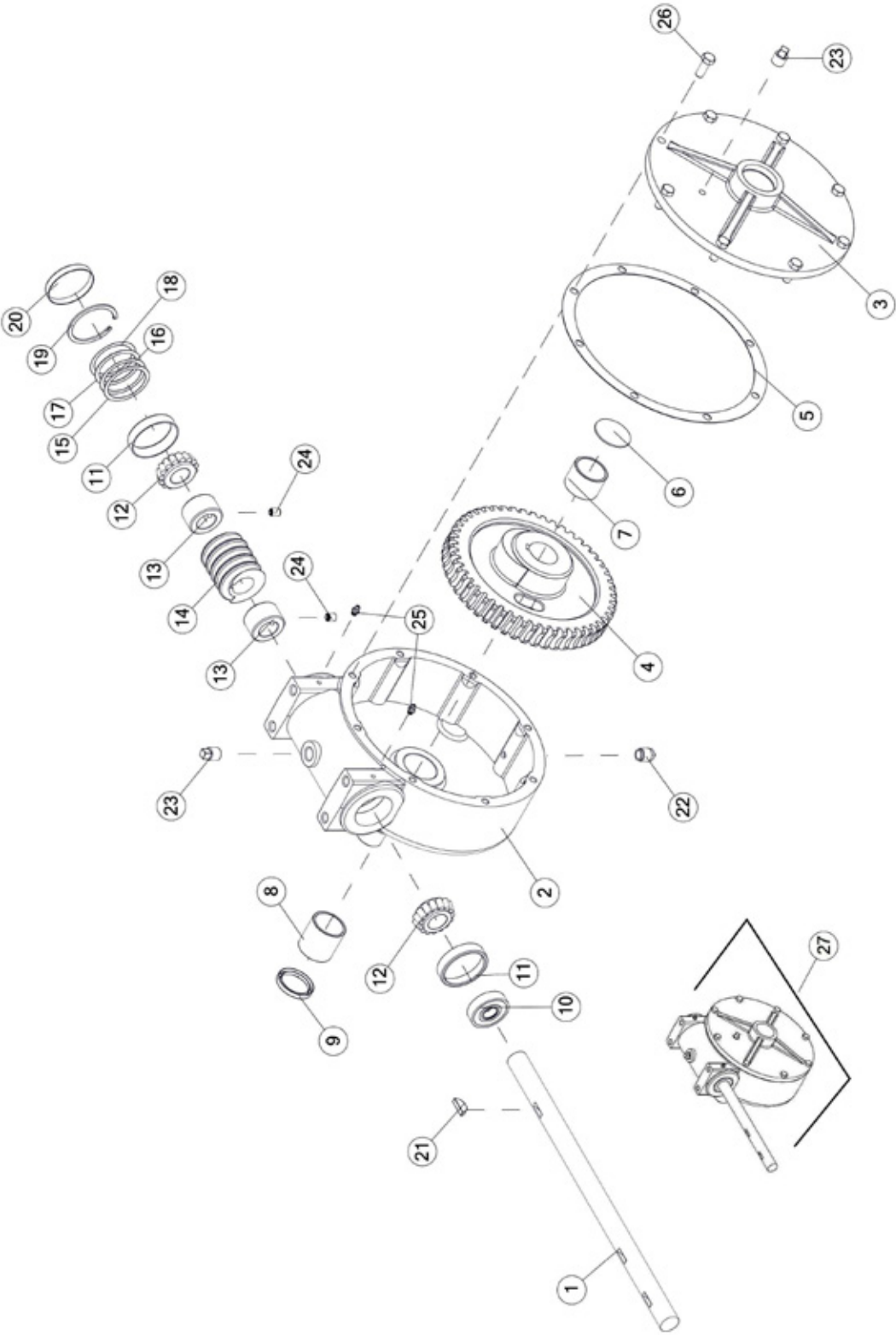


# FIGURE 7 OPTIONAL HYDRAULIC DRIVE ASSEMBLY



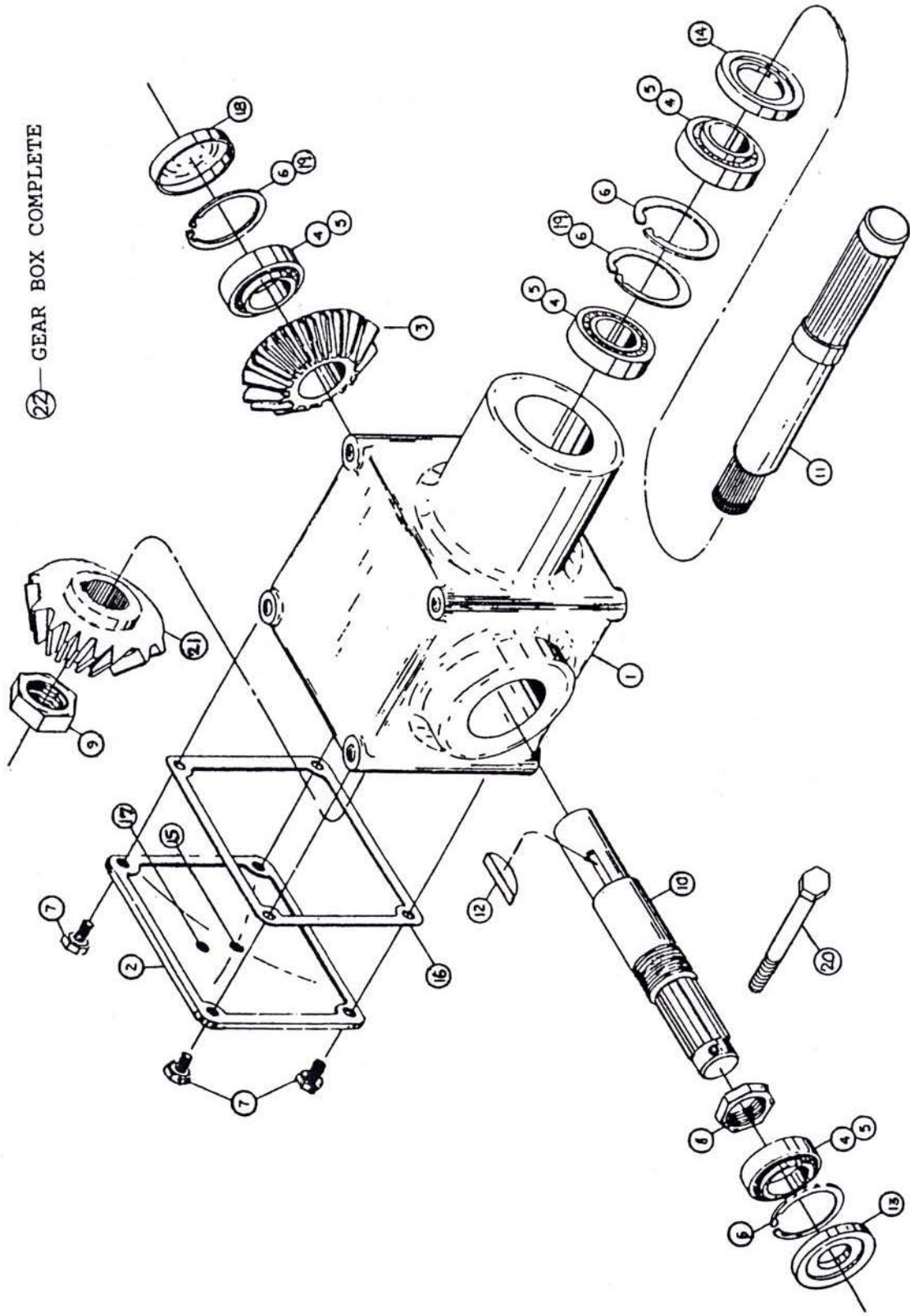


**FIGURE 8**  
**WORM GEARBOX ASSEMBLY**



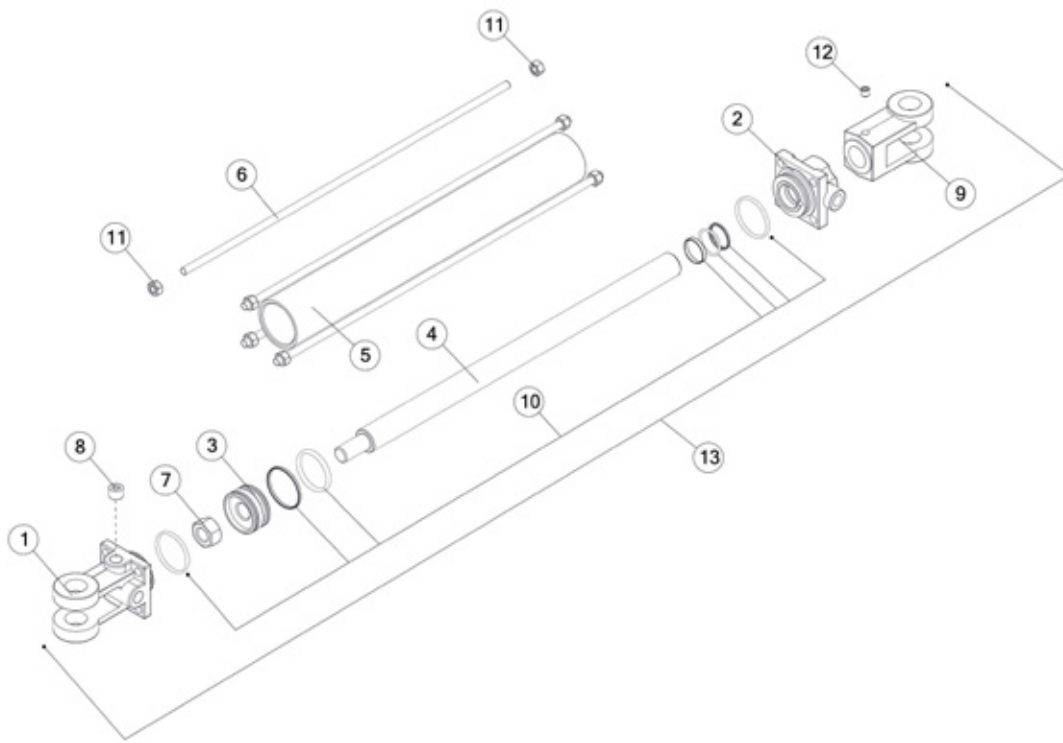


# FIGURE 9 BEVEL GEARBOX



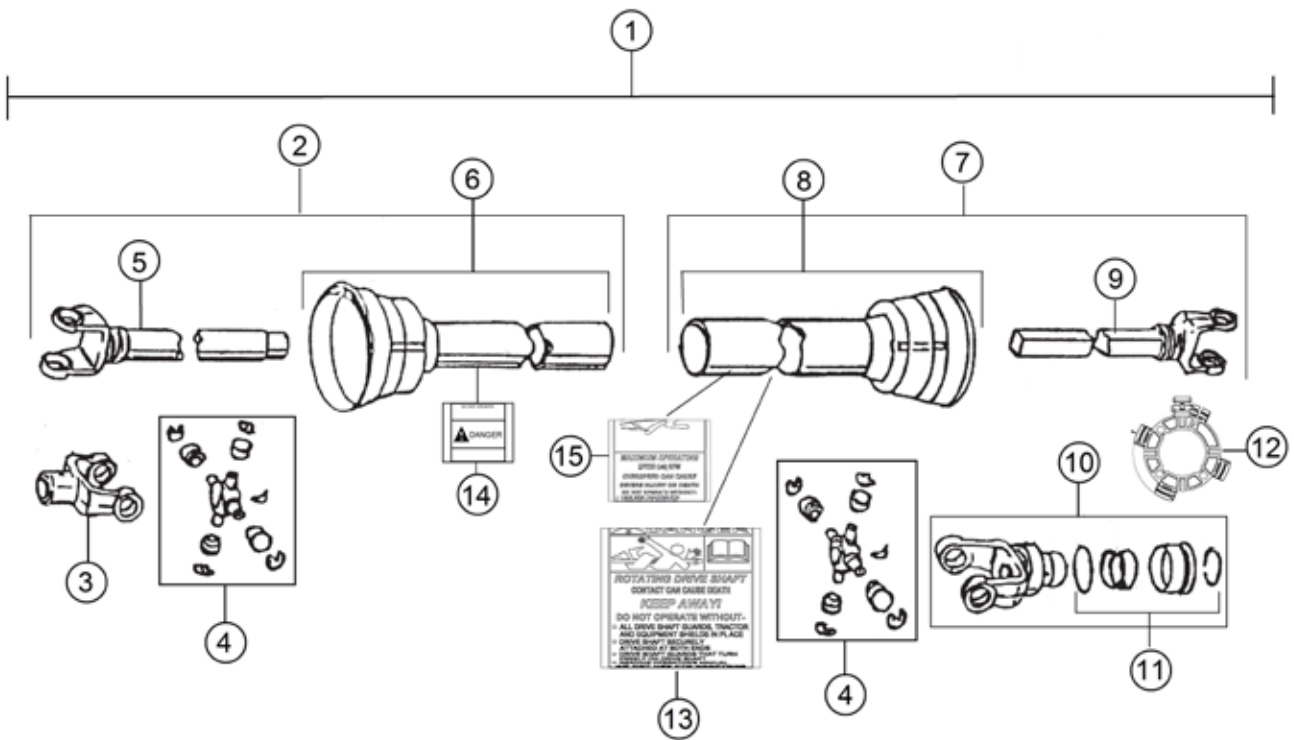


# FIGURE 10 HYDRAULIC CYLINDER



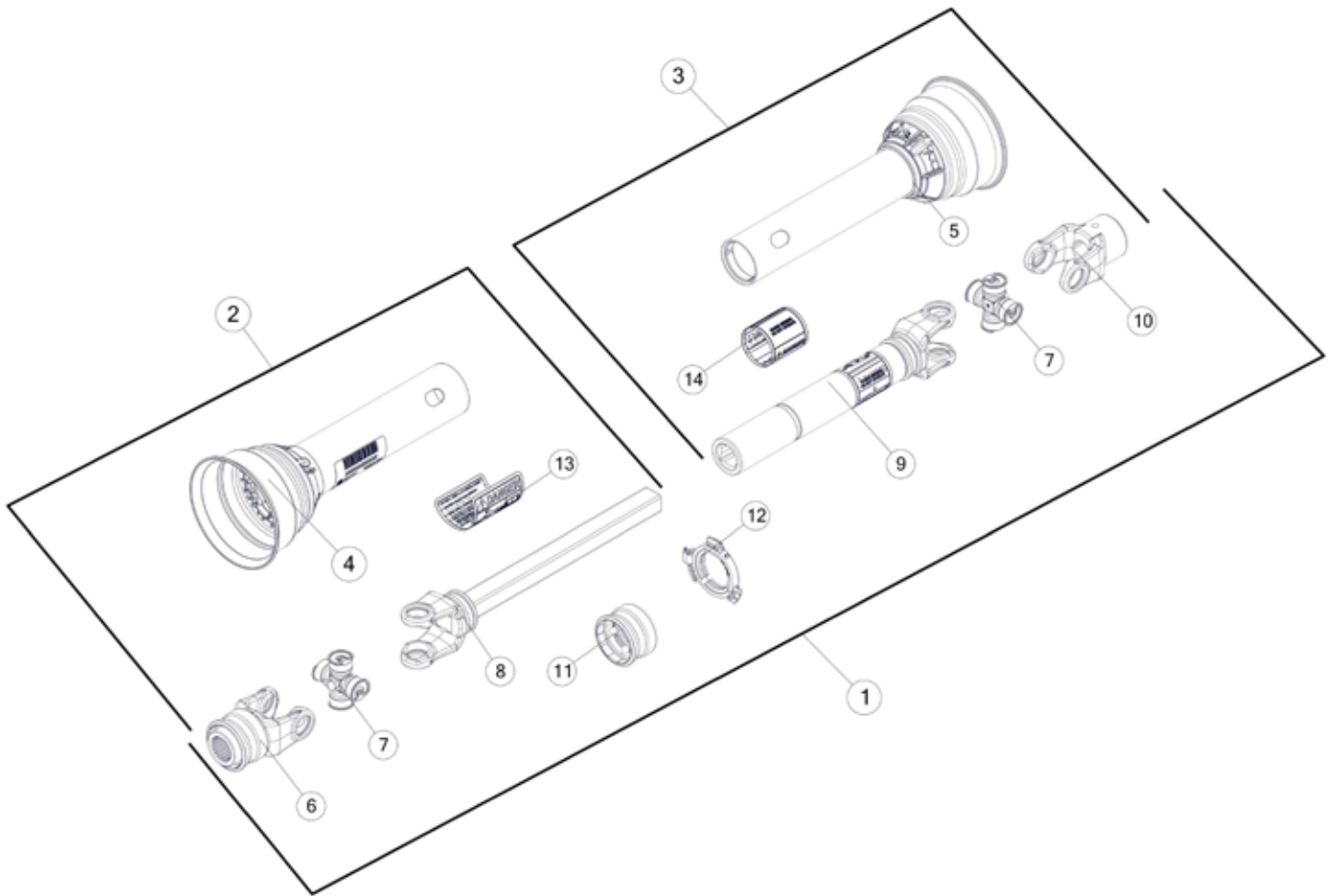


# FIGURE 11 PTO ASSEMBLY





**FIGURE 12**  
**PTO ASSEMBLY (1000RPM)**

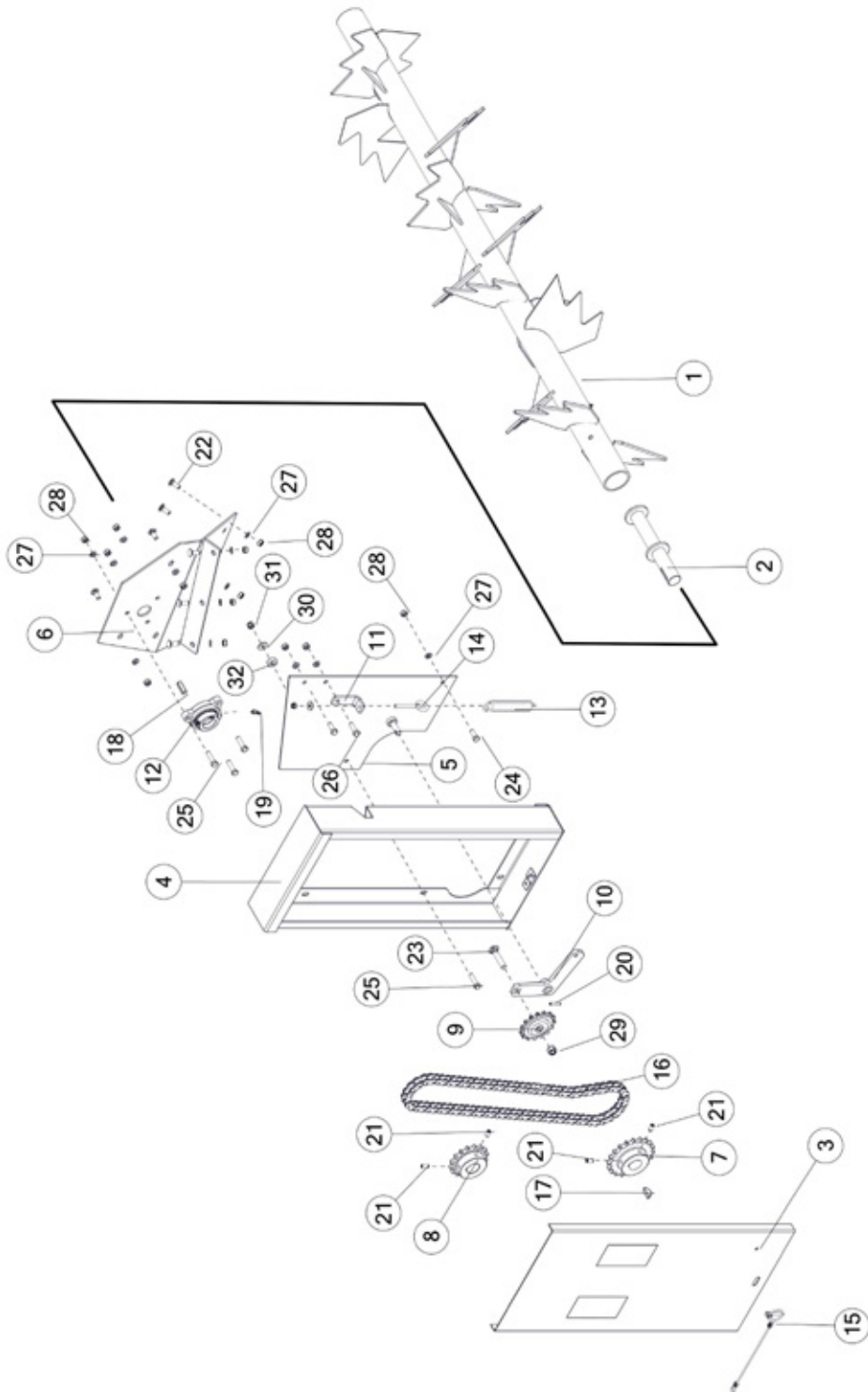


**FIGURE 12**  
**PTO ASSEMBLY (1000RPM)**

<u>ITEM</u>	<u>QTY</u>	<u>PART#</u>	<u>DESCRIPTION</u>
1	1	23N313	COMPLETE PTO
2	1	23N314	TRACTOR HALF W/SHIELD
3	1	23N153	MACHINE HALF PTO W/SHIELD
4	1	55864	OUTER GUARD
5	1	23N156	INNER GUARD
6	1	37N73	1000 RPM YOKE
7	2	14NW	14R CROSS & BEARING KIT
8	1	23N159	YOKE AND SHAFT
9	1	23N155	YOKE AND TUBE
10	1	G1R35	YOKE 1-1/4
11	1	S225	SPRING-LOK REPAIR KIT
12	1	55861	GUARD REPAIR KIT
*	1	S402	ADMA SAFETY MANUAL

**\*MEANS NOT SHOWN**

# **FIGURE 13** **OPTIONAL 2ND BEATER LH**

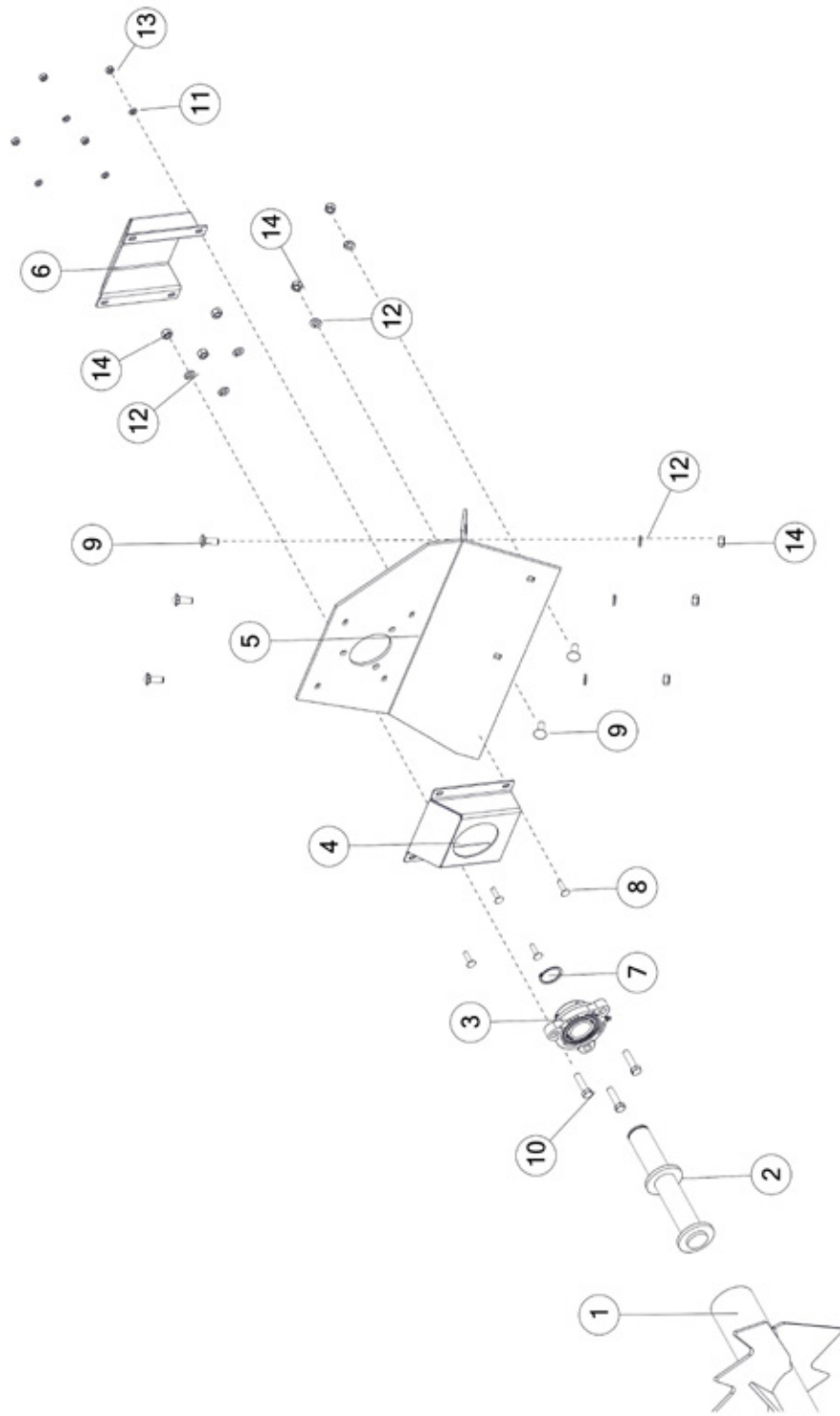


## FIGURE 13

### OPTIONAL 2ND BEATER LH

<u>ITEM</u>	<u>QTY</u>	<u>PART#</u>	<u>DESCRIPTION</u>
1	1	80724	SECOND BEATER
2	1	80723	STUB SHAFT, RH
3	1	81467	FRONT SHIELD WITH DECAL
4	1	81468	BEATER SHIELD WITH DECALS
5	1	81465	BACK SHIELD WITH DECAL
6	1	80718	BEATER PANEL, RH
7	1	80898	SPROCKET, 20T
8	1	D23	SPROCKET, 16T
9	1	12N42	IDLER SPROCKET,15T
10	1	80728	SPRING TENSIONER ARM
11	1	80152	SPRING TENSIONER BRKT
12	1	80725	BEATER BEARING
13	1	ST36	TENSION SPRING
14	1	YBTE10015	BOLT TURNED EYE, 5/16 X 2-5/8
15	1	S122	LANYARD CLIP PIN CABLE
16	1	37N49	ROLLER CHAIN #60
17	1	5B9	KEY
18	1	A32	SQUARE KEY
19	1	RG21	GREASE ZERK, 45 DEGREE
20	1	YPEX08010	EXPANSION PIN, 1/4 X 1-1/4
21	4	YSKP12035	SETSCREW, 3/8 X 3/4
22	6	YBCR12010	BOLT CARRIAGE, 3/8 X 1 G5
23	1	YBCR16025	BOLT CARRIAGE, 1/2 X 2-1/2 G2
24	2	YBHH12005	BOLT HEX, 3/8 X 1 G2
25	3	YBHH12025	BOLT HEX, 3/8 X 1-1/2 G5
26	1	YBHH12030	BOLT HEX, 3/8 X 1-1/4 G2
27	12	YWLO12005	WASHER LOCK, 3/8
28	12	YNHX12004	NUT HEX, 3/8 G2,
29	1	YNNY16005	NUT HEX, 1/2 G2,
30	1	YWFL12005	WASHER FLAT, 3/8

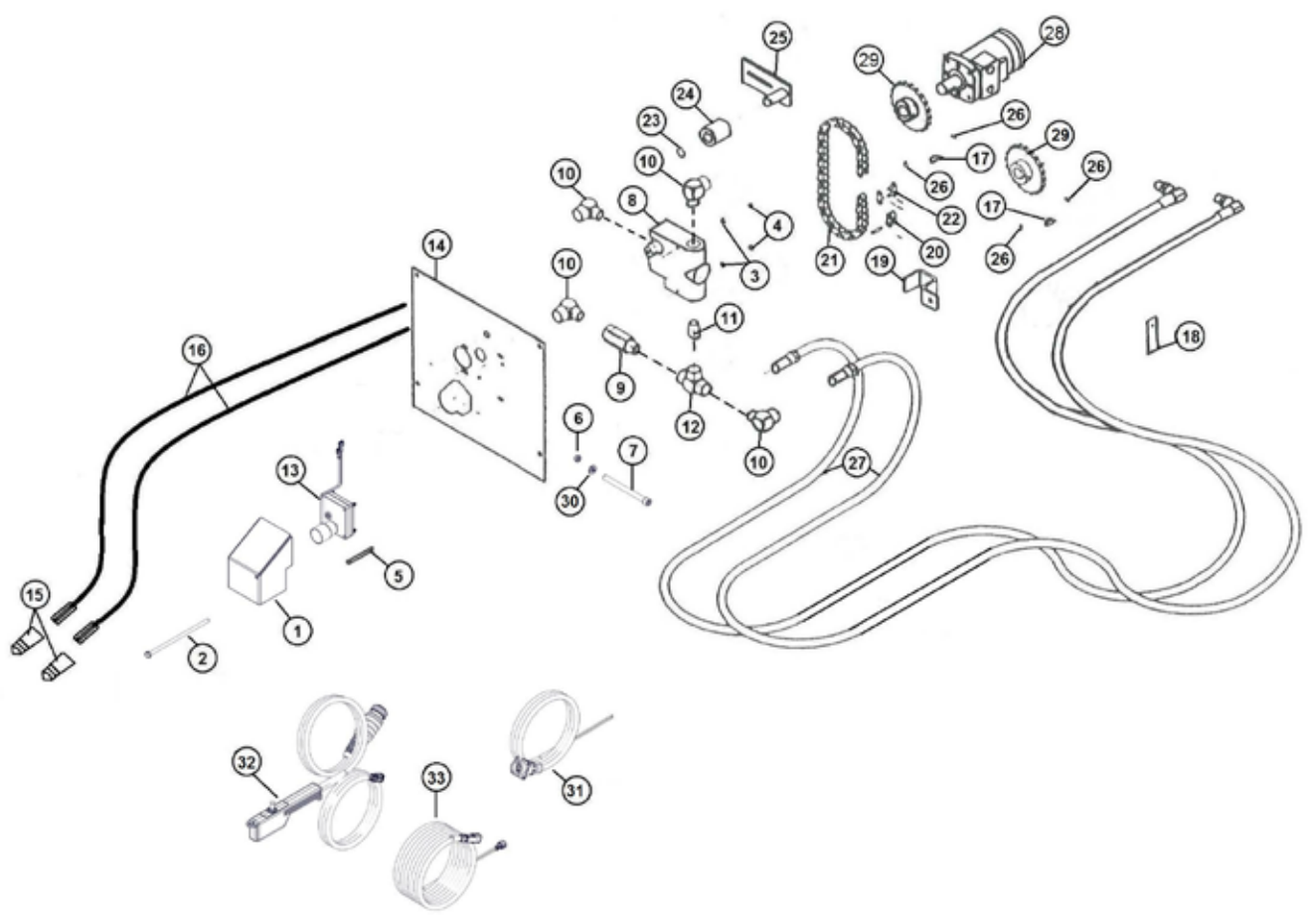
**FIGURE 13**  
**OPTIONAL 2ND BEATER RH**



**FIGURE 13**  
**OPTIONAL 2ND BEATER RH**

<b><u>ITEM</u></b>	<b><u>QTY</u></b>	<b><u>PART#</u></b>	<b><u>DESCRIPTION</u></b>
1	1	80724	SECOND BEATER
2	1	80721	STUB SHAFT LH
3	1	80725	BEATER BEARING
4	1	57216	BEATER BEARING PROTECTOR
5	1	80716	BEATER PANEL LH
6	1	80729	EXTERIOR BEATER BEARING PROTECTOR
7	1	81527	EXTERNAL SNAP RING 1-3/8
8	4	YBCR08005	BOLT CARRIAGE, 1/4 X 1 G5
9	5	YBCR12010	BOLT CARRIAGE, 3/8 X 1 G5
10	3	YBHH12025	BOLT HEX, 3/8 X 1-1/2 G5
11	4	YWLO08010	WASHER LOCK, 1/4 G8
12	8	YWLO12005	WASHER LOCK, 3/8
13	4	YNHX08005	NUT HEX, 1/4
14	8	YNHX12004	NUT HEX, 3/8 G2

# **FIGURE 14** **OPTIONAL ELECTRIC CONTROL FOR HYDRAULIC DRIVE**

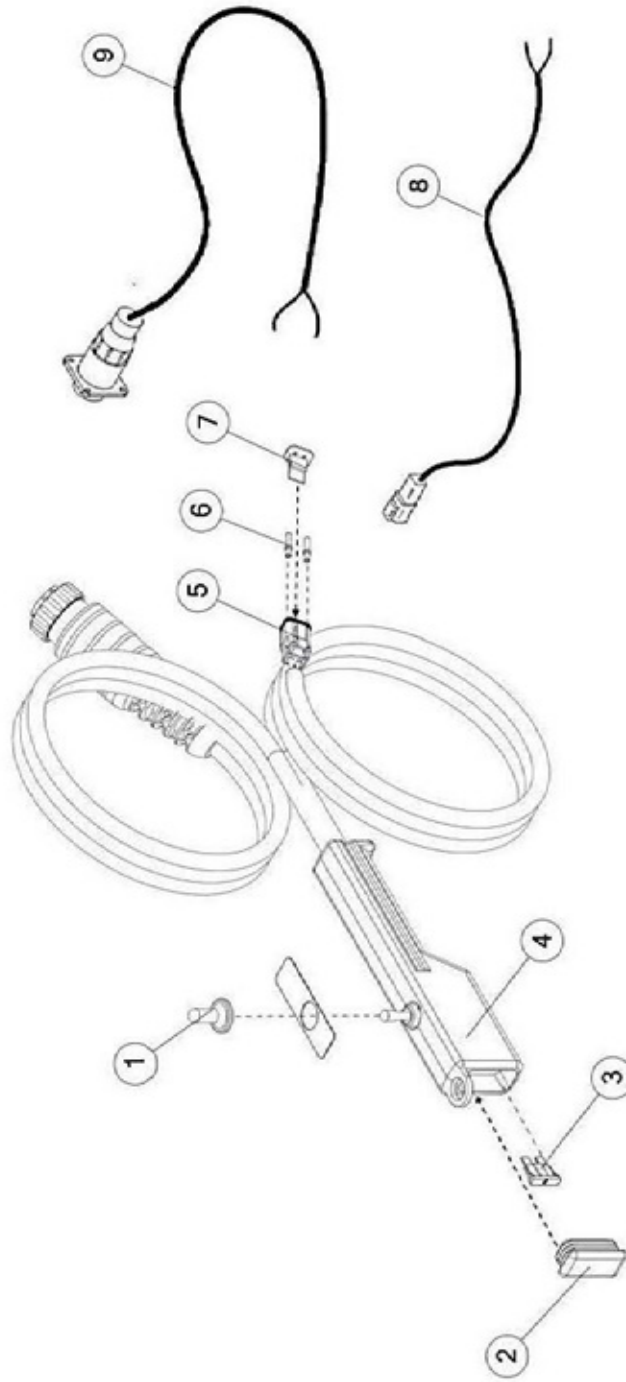


## FIGURE 14

### OPTIONAL ELECTRIC CONTROL FOR HYDRAULIC DRIVE

<u>ITEM</u>	<u>QTY</u>	<u>PART#</u>	<u>DESCRIPTION</u>
1	1	81058	MOTOR SHIELD HOLDER
2	1	YBHH08127	SHIELD BOLT
3	2	YWLO08005	WASHER LOCK, 1/4
4	2	YNTL08005	NUT HEX, 1/4 G2
5	2	YBCR08025	BOLT CARRIAGE, 1/4 X 2-1/2 G5
6	1	YNTL12005	NUT HEX, 3/8
7	1	YSHS12020	BOLT SOCKET, 3/8 X 4-1/2
8	1	DF15A	FLOW CONTROL
9	1	DF18	CHECK VALVE
10	4	HE58	FIT, 90, 1/2NPT X 1/2NPT
11	1	DF4	FIT, STRAIGHT, 1/2NPT X 1/2NPT
12	1	DF8	FIT, TEE, 1/2NPT X 1/2NPT X 1/2NPT
13	1	81270	GEAR MOTOR
*	1	81269	MOTOR CAP
14	1	23N133	CONTROL PANEL
15	2	DWM205	MALE QUICK COUPLER
16	2	23N309	HYD HOSE, 8 X 96
17	2	5B10	WOODRUFF KEY, 1/4 X 1
18	1	23N117	HOSE HOLDER
19	1	HE14	PIPE BRACKET
20	1	X60	OFFSET LINK (#50)
21	1	23N131	ROLLER CHAIN (#50, 40 PITCHES)
22	1	X61	CONNECTOR LINK (#50)
23	1	10R32	EXTERNAL SNAP RING
24	1	23N238	CHAIN TIGHTENER ROLLER
25	1	L10R35	TIGHTENER BRAKET
26	2	YSKP10010	SCREW SOCKET HEAD, 5/16 X 3/8
27	2	77330	HYDRAULIC HOSE, 6, 224IN
28	1	DF1	HYDRAULIC MOTOR
29	1	11S19	DRIVE SPROCKET (20T)
30	1	YWLO12005	WASHER LOCK, 1/4
31	1	16SV269	TRACTOR CONTROL HARNESS
32	1	63365	HAND CONTROLLER
33	1	16SV272	POWER SUPPLY CABLE

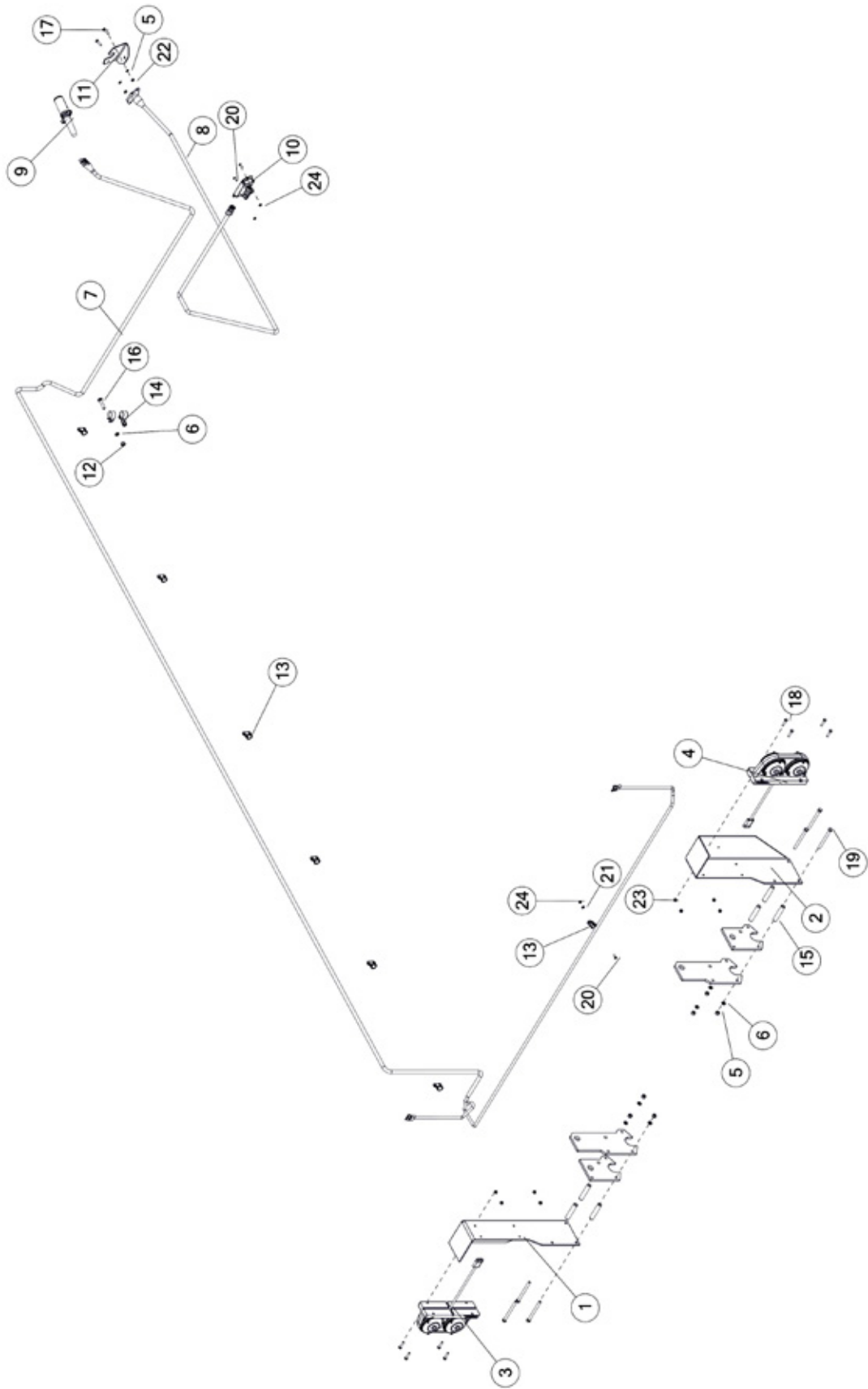
# **FIGURE 15** **ELECTRIC CONTROL**



**FIGURE 15**  
**ELECTRIC CONTROL**

<b><u>ITEM</u></b>	<b><u>QTY</u></b>	<b><u>PART#</u></b>	<b><u>DESCRIPTION</u></b>
1	1	16SV235	SWITCH BOOTS
2	1	61564	CAP
3	1	61597	FUSE, BLADE, 5AMP
4	1	63365	HAND CONTROLLER (ON-OFF-ON)
5	1	58790	DEUTSCH 2 PIN PLUG
6	2	56760	DEUTSCH SOCKET, SOLID, 14-16 GA.
7	1	58793	LOCKING WEDGE FOR DT06-2S CONNECTOR
8	1	56N134	SPREADER CONTROL CORD
9	1	16SV269	TRACTOR CONTROL CABLE

# FIGURE 16 LIGHT KIT



## FIGURE 16 LIGHT KIT

<u>ITEM</u>	<u>QTY</u>	<u>PART#</u>	<u>DESCRIPTION</u>
1	1	77918	LIGHT BRACKET LH
2	1	77922	LIGHT BRACKET RH
3	1	77923	TAIL LIGHT ASSY LH
4	1	77924	TAIL LIGHT ASSY RH
5	1	YNL12005	NUT HEX, 3/8
6	2	YWLO12005	WASHER LOCK, 3/8
7	1	77975	ELEC HARNESS
8	1	79260	LIGHT HARNESS
9	1	TLPC	TRANSPORT LIGHT CORD
10	1	69908	MODULE CONTROL BLINKER
11	1	BFR659	LIGHT BRACKET
12	2	YNL12005	NUT HEX, 3/8
13	5	HGV162	1/2 RUBBER WIRE HOLDER
14	2	HGV72	SMALL TUBE HOLDER SPACER
15	6	ST55	BOLT CARRIAGE, 3/8 X 2
16	2	YBCR12035	BOLT, CARRIAGE 1/4 X 1
17	2	YBHH08005	BOLT HEX, 1/4 X 1-1/4
18	8	YBHH08030	BOLT HEX, 3/8 X 4-1/2
19	8	YBHH12185	MACHINE SCREW #10-24 X 5/8
20	6	YSPN64005	RIVET
21	6	YMRV06015	WASHER, 3/16
22	2	YNHX08005	NUT HEX, 1/4
23	8	YNNY08005	NUT HEX, 1/4
24	8	YNNY64005	NUT HEX, #10-24



# CHANGE NOTES

1. Added 81269 to Figure 14
2. Added light kit to Figure 16

**H&S MFG. CO.**

products approved

for the

**FEMA**

**SEAL OF QUALITY**

