



PARTS BOOK

S2280

MANURE SPREADER

Part #91277

Rev. #05

HSMFG010725

Starting Ser. #622PD80001



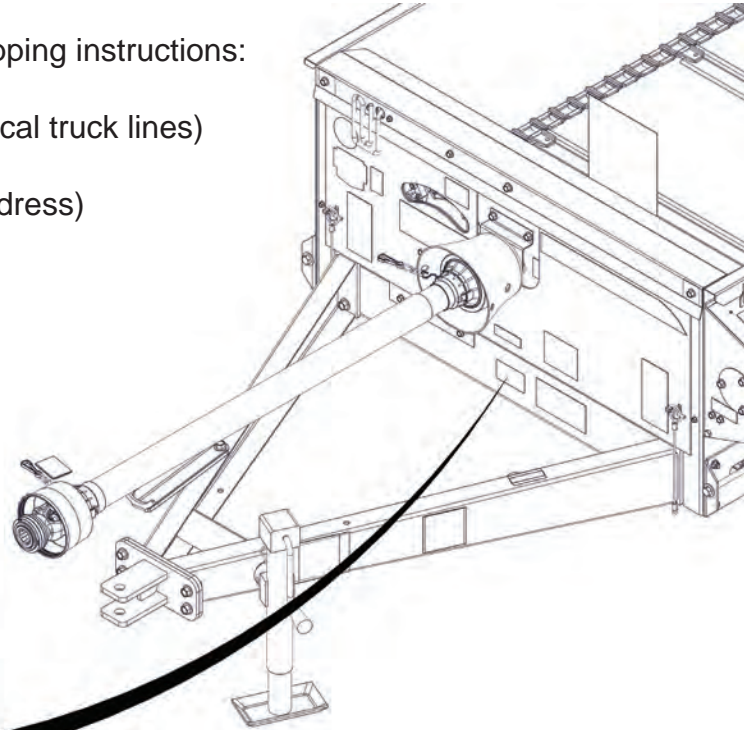
INSTRUCTIONS FOR ORDERING PARTS

All service parts should be ordered through your authorized H&S dealer. Your Dealership will be able to give you faster service if you will provide them with the following:

1. All references to left or right apply to the machine as viewed from the rear.
2. Parts should not be ordered from illustration only. Please order complete part number.
3. If your dealer has to order parts - give shipping instructions:

VIA truck - large pieces (please specify local truck lines)

VIA United Parcel Service (include full address)



H&S MFG. CO. INC. MARSHFIELD, WIS.	
MOD. NO.	<input type="text"/>
SER. NO.	<input type="text"/>
DESCR.	<input type="text"/>

PLEASE RECORD NUMBERS FOR YOUR UNIT FOR QUICK REFERENCE

ABOUT IMPROVEMENTS

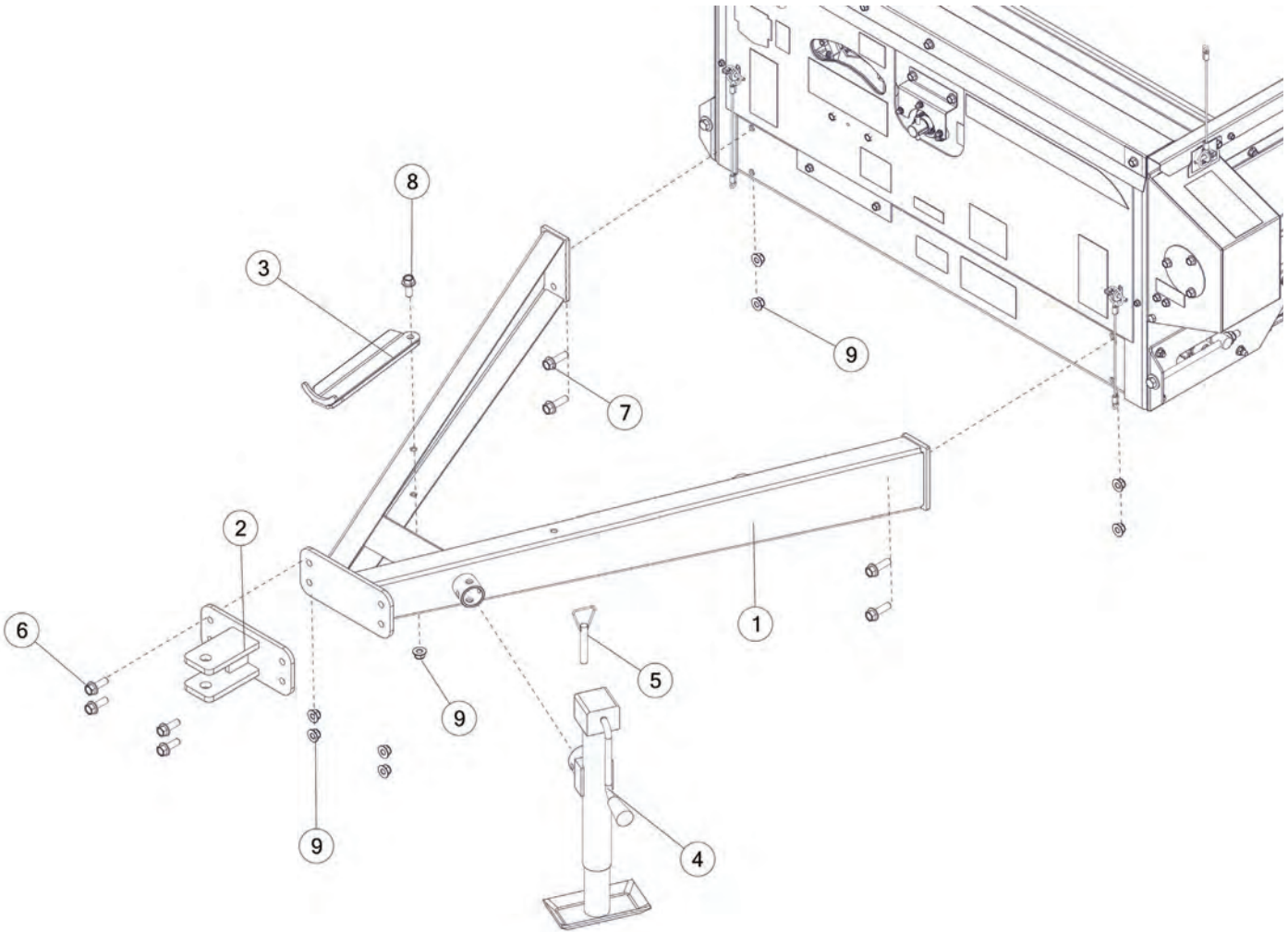
H&S IS CONTINUALLY STRIVING TO IMPROVE ITS PRODUCTS

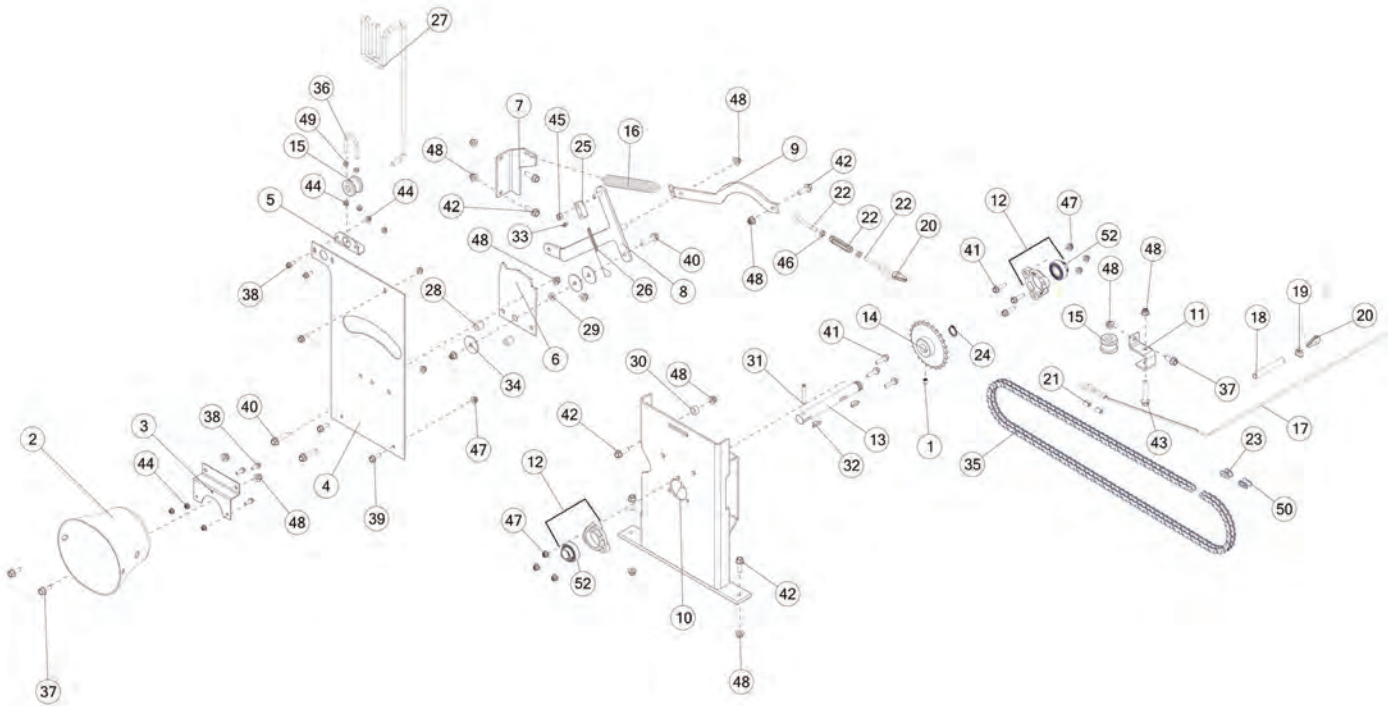
We must, therefore, reserve the right to make improvements or changes whenever it becomes practical to do so, without incurring any obligation to make changes or additions to the equipment previously sold.





FIGURE 1
FRONT POLE & COMPONENTS





REF #	PART #	DESCRIPTION	QTY
1	YSKP12010	SET SCREW, SOCKET, KNURLED CUP PT, 3/8-16 X 1/2	1
2	17G45	PLASTIC PTO SHIELD	1
3	91278	CENTER BEARING BRACKET	1
4	72001	SHIFTING MECHANISM BRACKET	11
5	71972	CABLE GUIDE BRACKET, FRONT	1
6	23N283	STOP BRACKET	1
7	91205	SPRING STANDOFF	1
8	72015	LEVER, SHIFTER	1
9	71284	PIVOT LINK BRACKET	1
10	68993	FRONT FRAME POST	1
11	17G55	ROPE GUIDE BRACKET	1
12	80530	PILLOW BLOCK BEARING, 1	2
13	80N7	INPUT SHAFT	1
14	69783	SPROCKET, 50, B, 25, 1 SHAFT	1
15	F33	SIDE CABLE GUIDE	2



FIGURE 2

INPUT SHAFT ASSEMBLY

REF #	PART #	DESCRIPTION	QTY
16	10R14	COIL SPRING, 8-1/2, 25, TENS	1
17	70713	SHIFTER CABLE, .19 X 121	1
18	72120	ELEC HARNESS, HEAT SHRINK, 4 X 1/2	1
19	BFR220	CABLE CLAMP, 3/16	1
20	ES14	THIMBLE	2
21	71279	SLEEVE, .13 X .63	2
22	F84	TURNBUCKLE EYE BOLT	1
23	X60	OFFSET LINK	1
24	3G21	SNAP RING, 1 HEAVY DUTY	1
25	23N282	SHIFTERDOG BRACKET, 5/8	1
26	23N284	SPRING, EXT, COIL, 5.50 X 6.95, 1.20, SHIFTER DOG	1
27	23N183	ROPE, .38 X 144	1
28	ST81	EXTENSION SPACER, 11/16	2
29	23N297	TUBE, RND, STR, .75 X .19 X .21, DOM	1
30	80N11	FRONT POST SPACER	1
31	YPEX10020	EXPANSION PIN, 5/16 X 2-1/4	1
32	5B10	WOODRUF KEY, 1/4 X 1	2
33	G89	STRAIGHT ZERK, 1/4-28	1
34	YWCU12005	WASHER CUST, FLAT, .435 ID. X 1-7/8 OD. X .125 ZC	3
35	70200	CHAIN, ROLL, 50 X 119	1
36	YBPU08005	PIPE U BOLT, 1/4 X 3/4	1
37	YBFB12003	BOLT FLANGE, 3/8 X 1 G5	2
38	YBFB08075	BOLT FLANGE, 1/4 X 3/4 G5	5
39	YBFB10001	BOLT FLANGE, 5/16 X 1 G5	3
40	YBFB12175	BOLT FLANGE, 3/8 X 1-3/4 G5	3
41	YBFB10125	BOLT FLANGE, 5/16 X 1-1/4 G5	6
42	YBFB12125	BOLT FLANGE, 3/8 X 1-1/4 G5	6
43	YBFB12250	BOLT FLANGE, 3/8 X 2-1/2 G5	1
44	YNFG08010	NUT FLANGE, 1/4 GF	7
45	YNRL12005	NUT HEX, 3/8-16 LKRS A ZC	1
46	YNHX10010	NUT HEX, 5/16-18 NA G5 ZC RH THREAD	1
47	YNFG10005	NUT FLANGE, 5/16 GF	8
48	YNFG12006	NUT FLANGE, 3/8 GF	12
49	YNHX08007	NUT HEX, 1/4	2
50	X61	CONNECTOR LINK	1
51	YNHX10015	NUT HEX, 5/16-18 NA G5 ZC LH THREAD	1
52	23N221	BEARING W/SET SCREWS, 1IN	2





FIGURE 3
FRONT PANEL & COMPONENTS

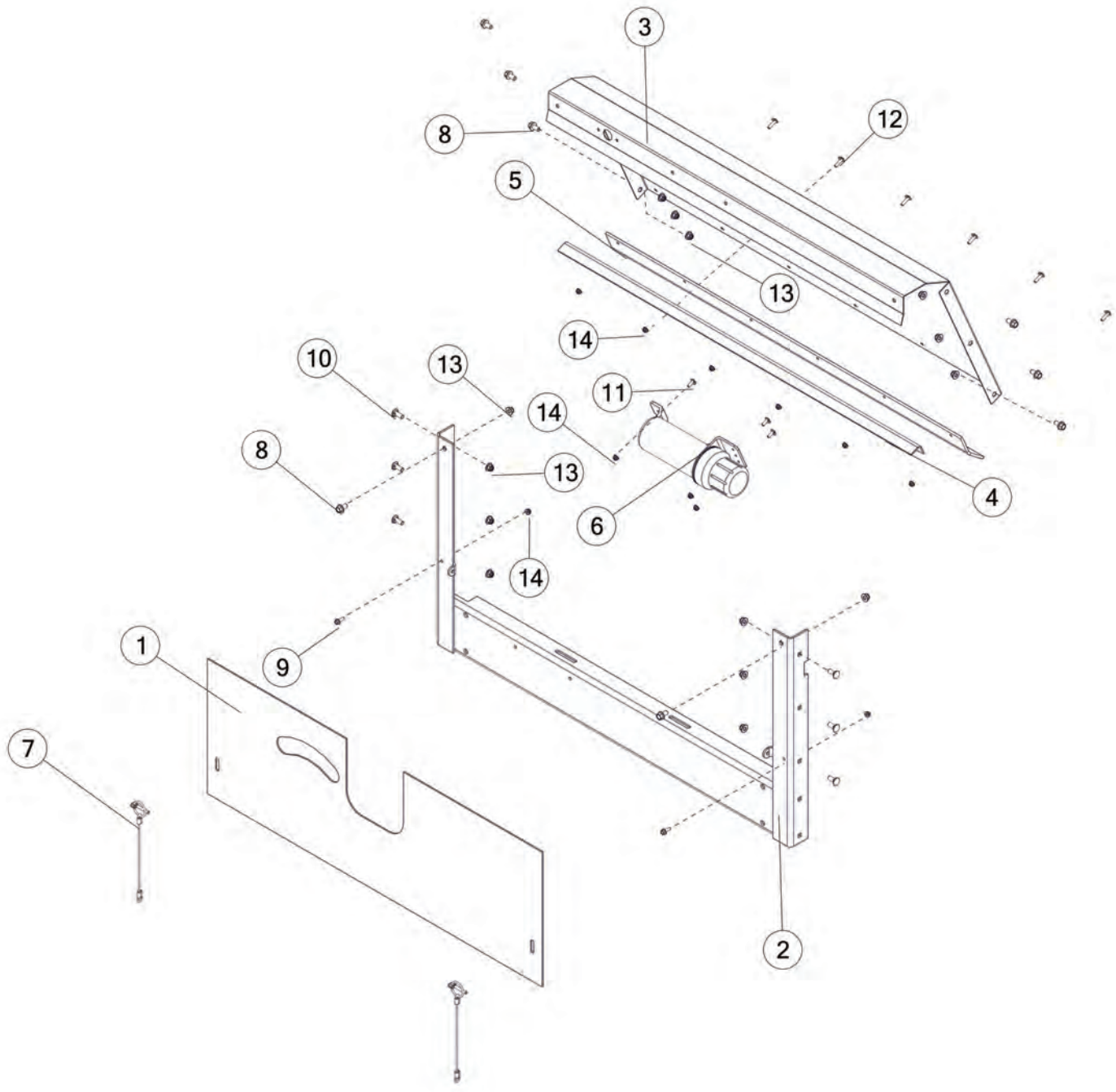




FIGURE 4 SIDE PANELS & COMPONENTS

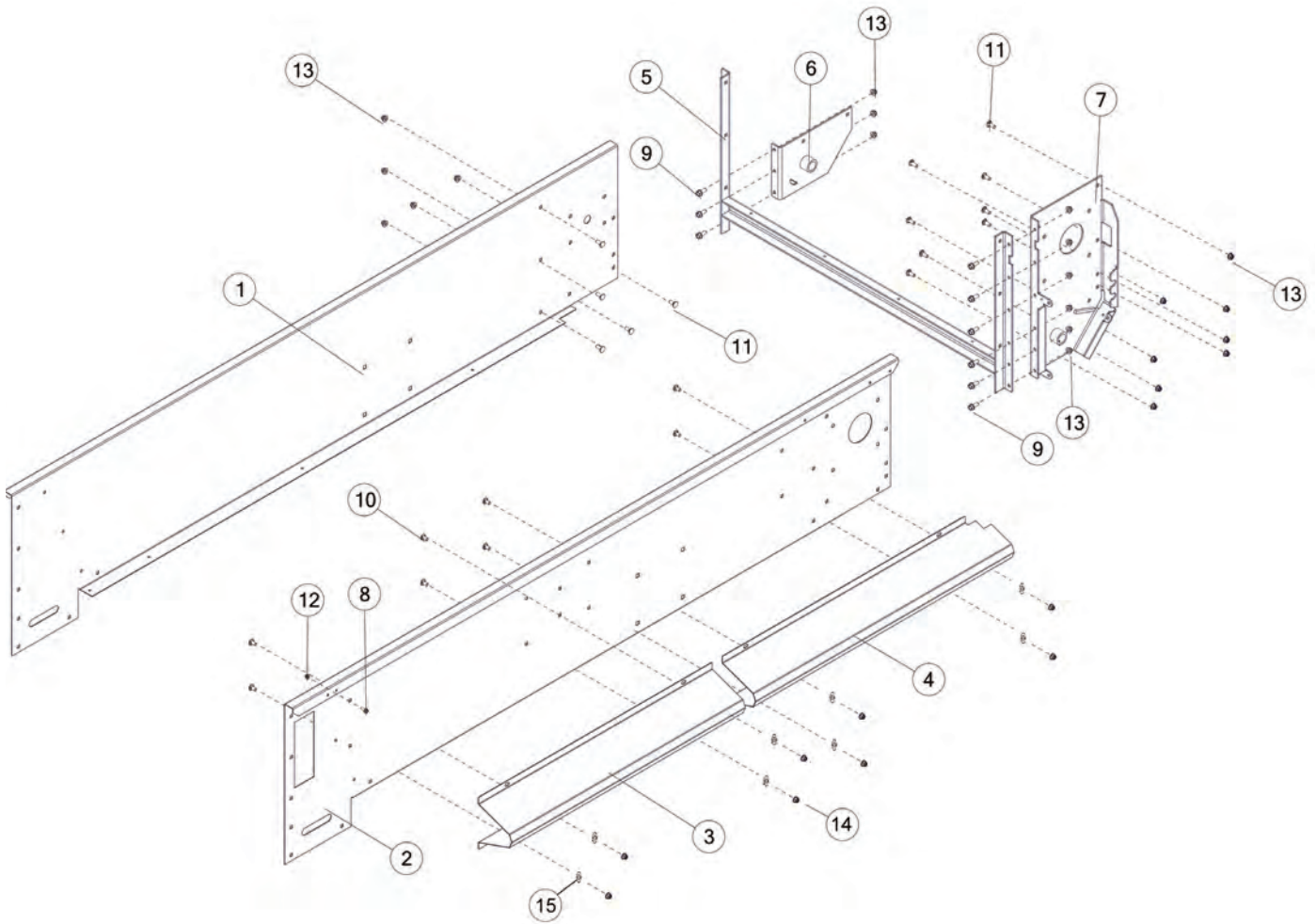
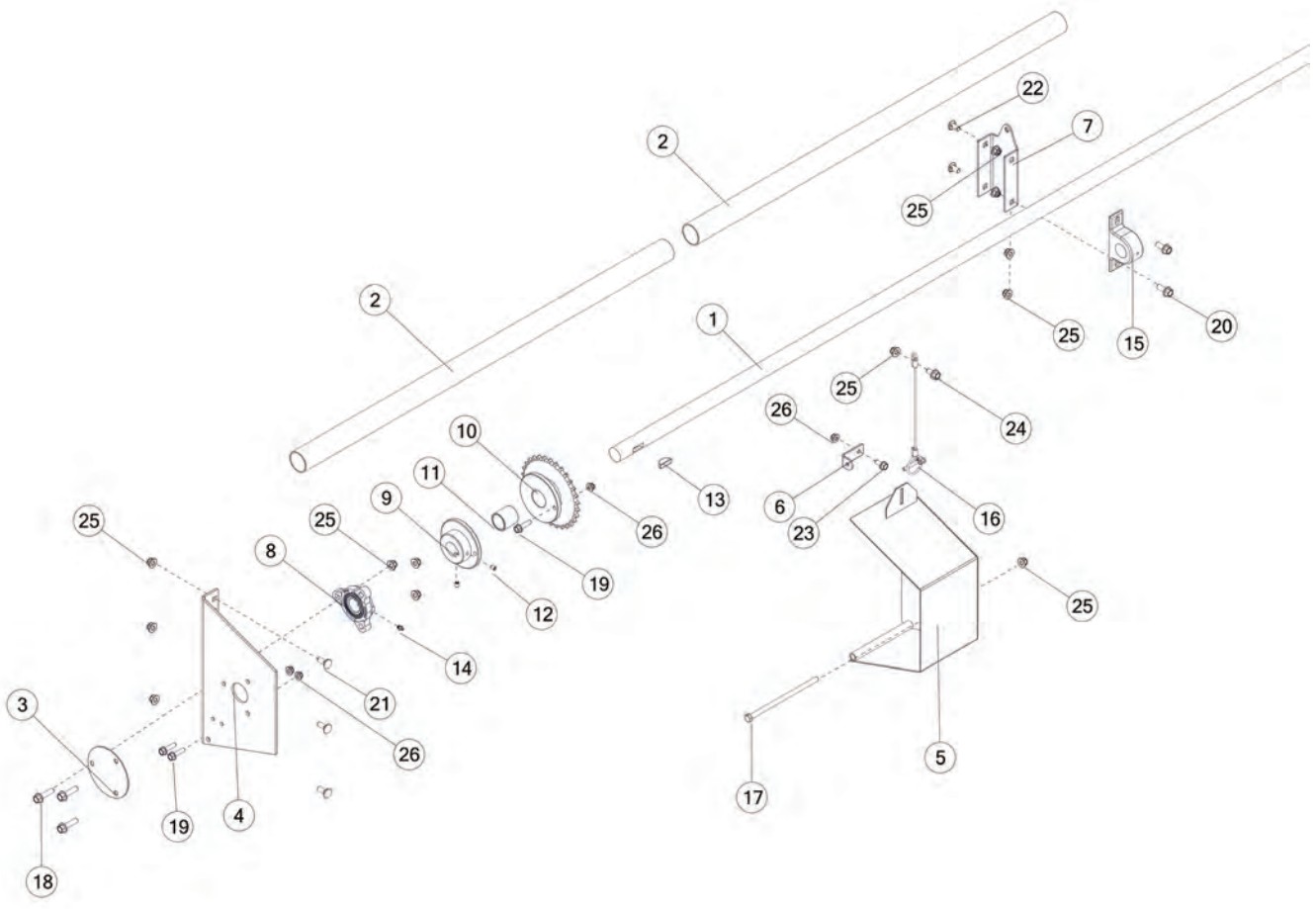
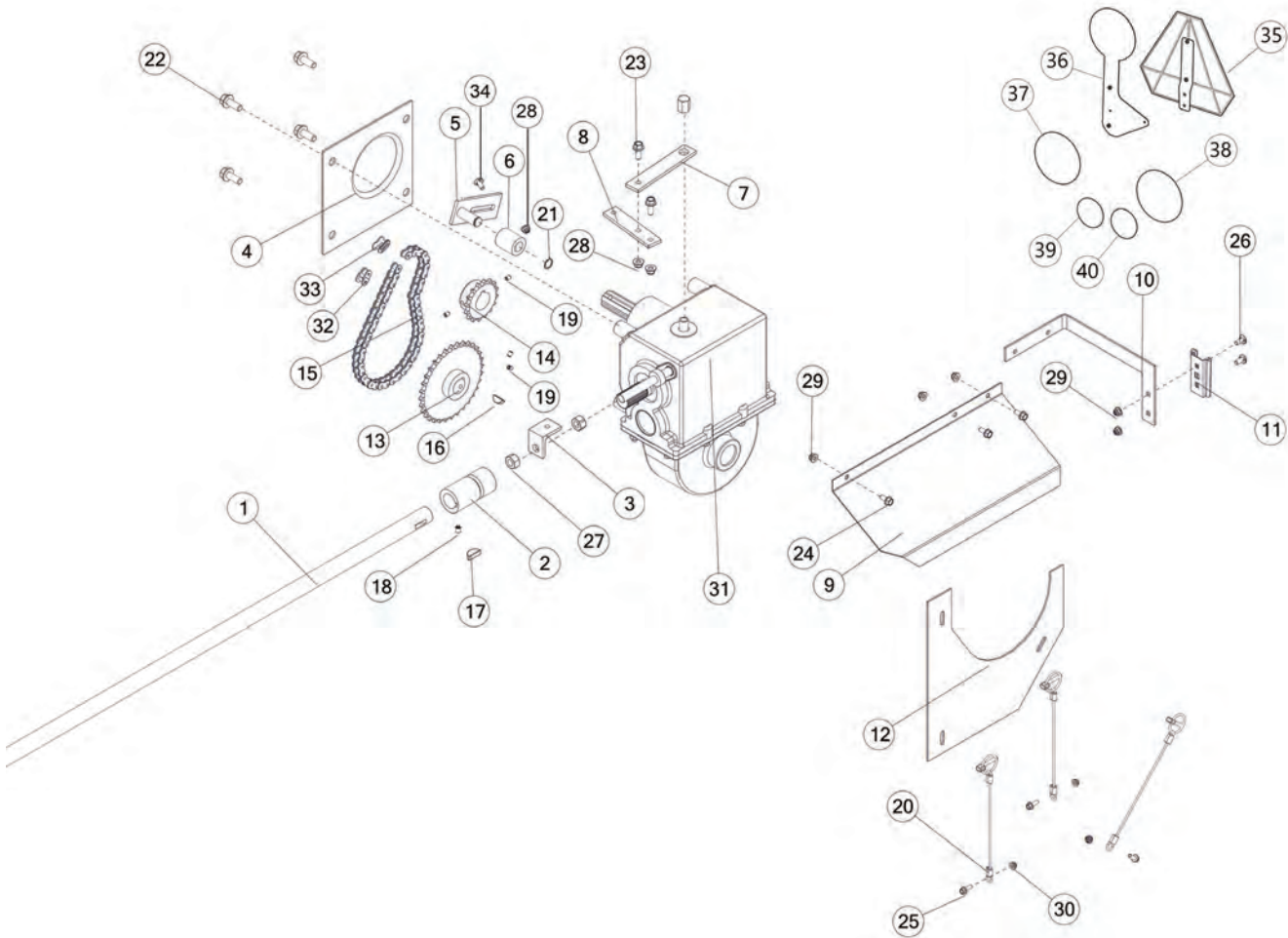




FIGURE 5 SIDE SHAFT & COMPONENTS





REF #	PART #	DESCRIPTION	QTY
1	91268	SIDE SHAFT	1
2	17G65	COUPLER ASSEMBLY	1
3	23N291	BRACKET, ROD, SHIFTER	1
4	69964	BEATER FLARE	1
5	L10R35	TIGHTENER BRACKET ASSEMBLY	1

REF #	PART #	DESCRIPTION	QTY
6	23N238	CHAIN TIGHTENER ROLLER	1
7	23N289	SHIFTER ROD LEVER FULCRUM	1
8	23N290	SHIFTER ROD BRACKET	1
9	91218B	GEARBOX SHIELD W/DECALS	1
10	70192	BRACKET, SMV	1
11	F97	SMV BRACKET	1
12	72078B	CHAIN SHIELD, POLY, 14.7 X 14.4 X .13 W/DECALS	1
13	69791	SPKT, 50, B, 32, 1.25 SHAFT	1
14	69786	SPKT, 50, B, 16, 1.50 SHAFT	1
15	70193	CHAIN, ROLL, 50 X 45	1
16	G12	WOODRUF KEY, 5/16 X 1	1
17	5B9	WOODRUF KEY, 3/8 X 1-1/4	1
18	YSKP12010	SET SCR, SOCKT, KNURLED CUP PT, 3/8-16 X 1/2	1
19	YSKP10010	SET SCR, SOCKT, KNURLED CUP PT, 5/16 - 18 X 3/8	4
20	S122	LANYARD, CLIP PIN CABLE	3
21	10R32	SNAP RING, EXTERNAL, .7	1
22	YBFB16100	BOLT FLANGE, 1/2 X 1 G5	4
23	YBFB12003	BOLT FLANGE, 3/8 X 1 G5	2
24	YBFB10075	BOLT FLANGE, 5/16 X 3/4 G5	3
25	YBFB08075	BOLT FLANGE, 1/4 X 3/4 G5	3
26	YBCR10030	BOLT CARRIAGE, 5/16-18 X 3/4 G5 ZC	2
27	YNHX20005	NUT HEX, 5/8-11 NA A ZC	2
28	YNFG12006	NUT FLANGE, 3/8 GF	3
29	YNRL12005	NUT HEX , REVERSIBLE-SIDE LOCK, 3/8	5
30	YNFG08010	NUT FLANGE, 1/4 GF	3
31	17G142	GEARBOX	1
32	X60	OFFSET LINK, #50	1
33	X61	CONNECTOR LINK, #50	1
34	YBCR12020	BOLT CARRIAGE, 3/8 X 1-1/4 G5	1
35	BFR723	SMV BRACKET	1
36	88414	SIGN BRACKET	1
37	88413	DECAL NOTICE 30KM/H	1
38	88412	DECAL NOTICE 20MILE/H	1
39	HS103288	DECAL NOTICE	1
40	HS103201	DECAL NOTICE	1





FIGURE 7
HUB, SPINDLE & COMPONENTS

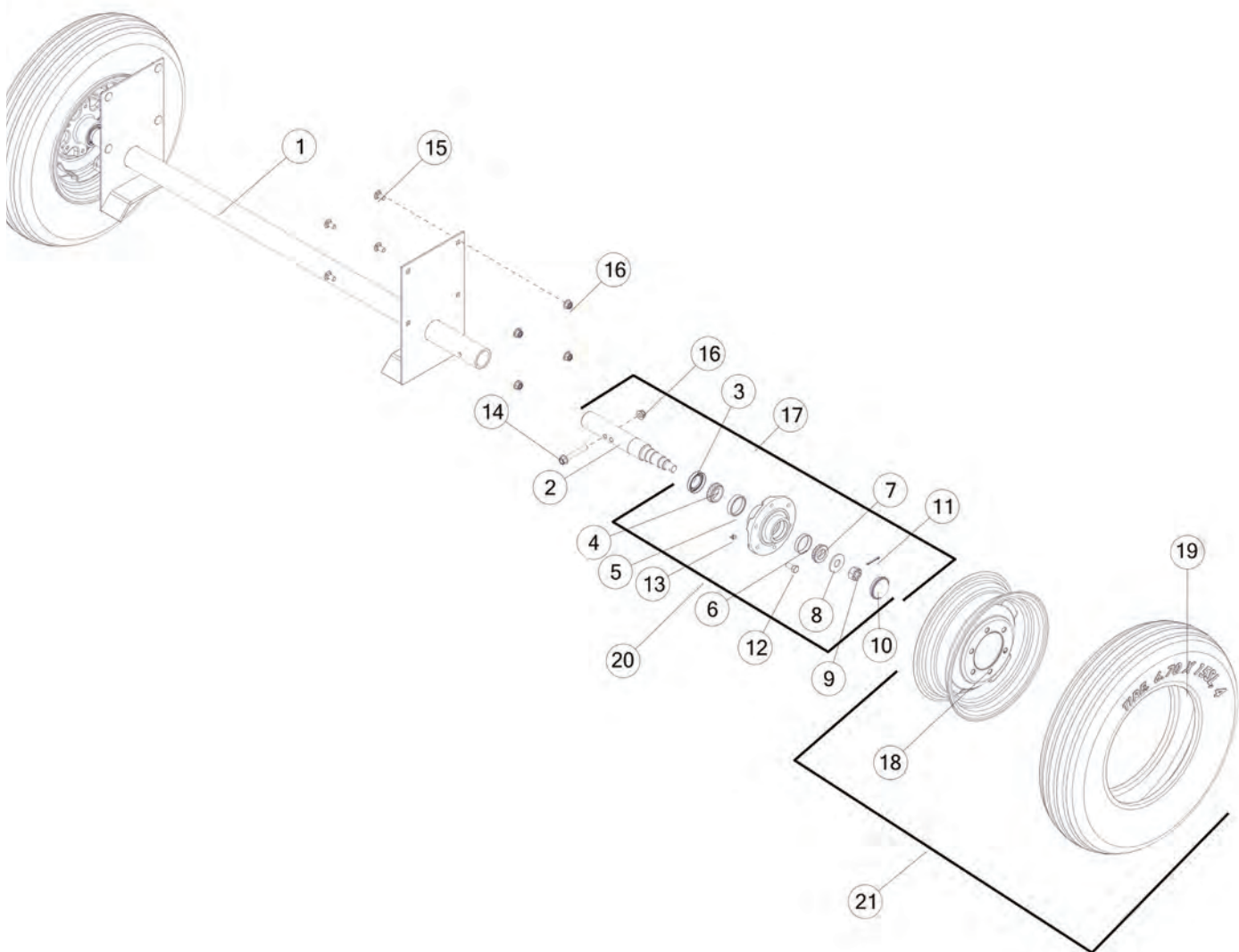




FIGURE 8 FLOOR & COMPONENTS

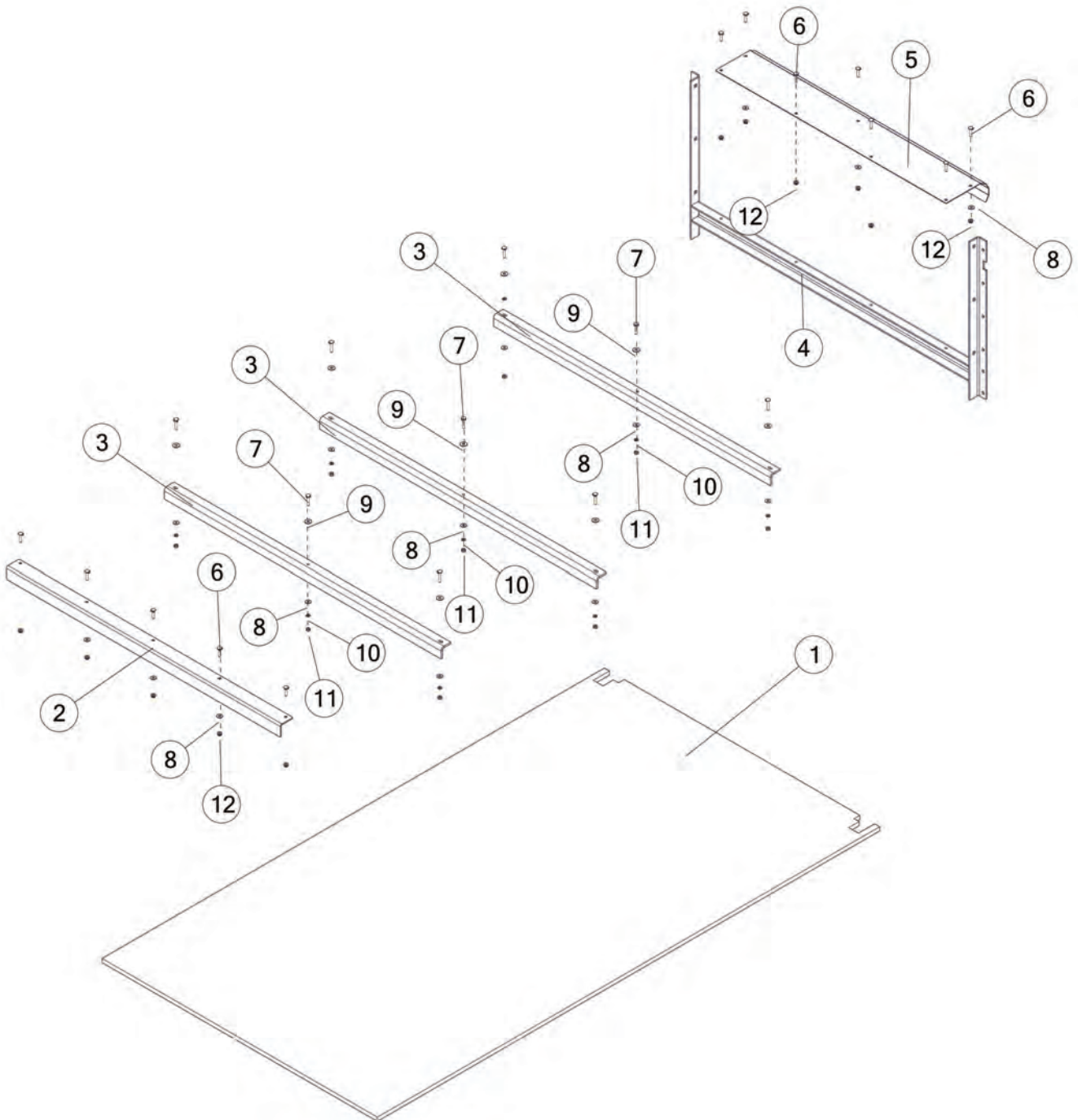




FIGURE 9 DRIVE SHAFTS & COMPONENTS

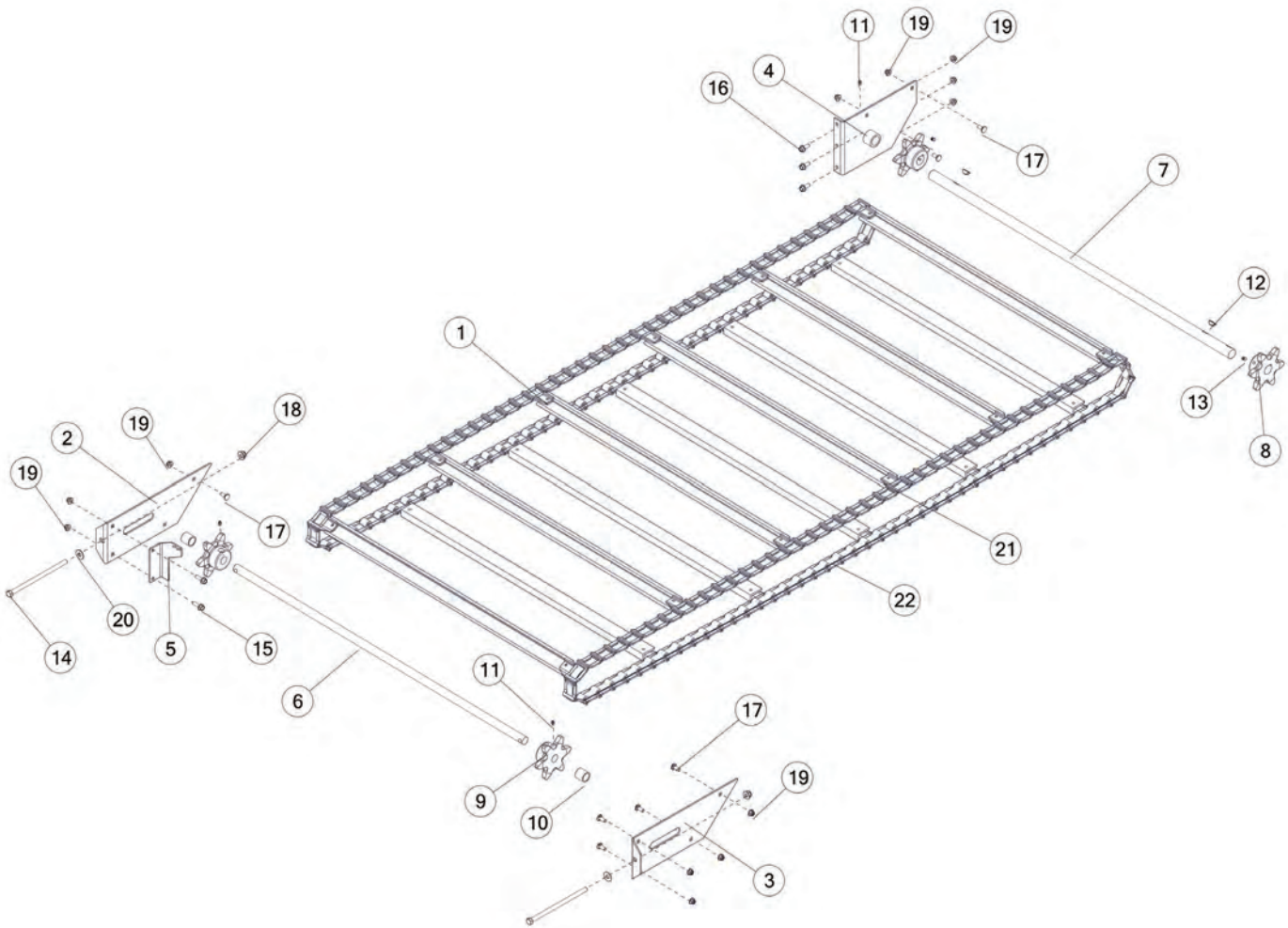




FIGURE 10 BEATER & COMPONENTS

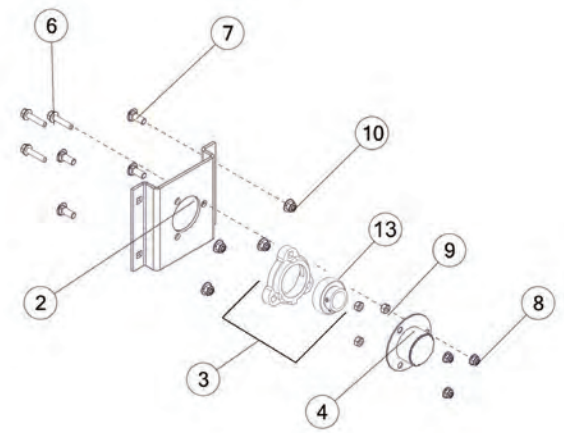
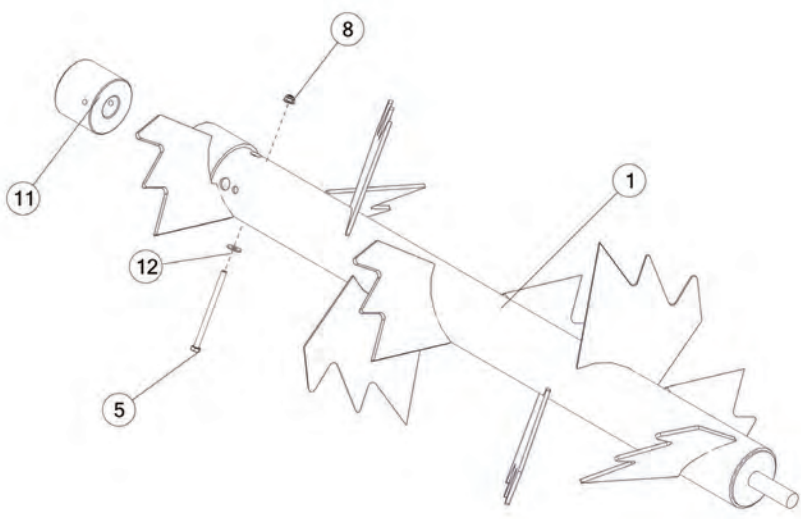
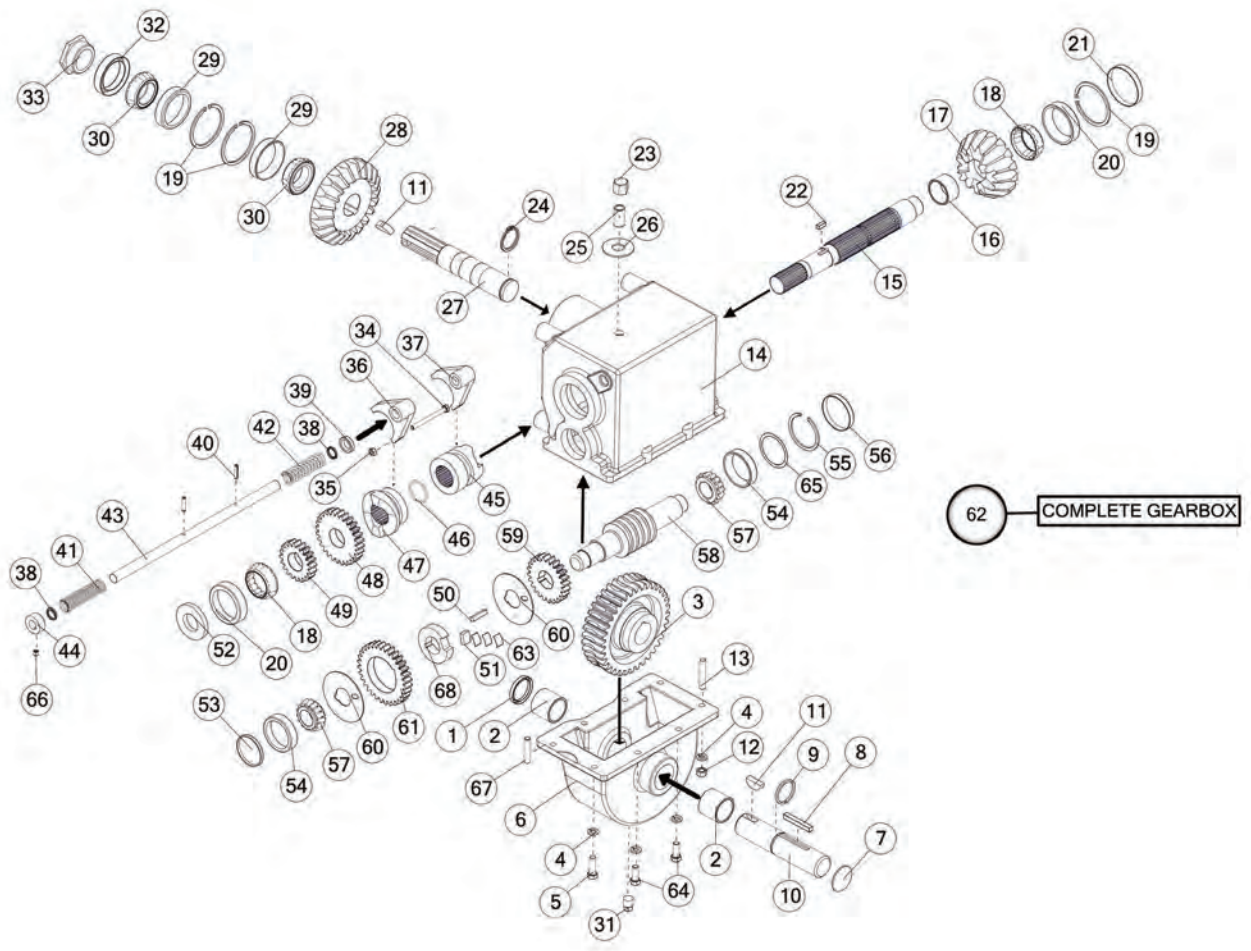




FIGURE 11

GEARBOX





REF #	PART #	DESCRIPTION	QTY
1	17G133	SEAL	1
2	17G134	BRONZE BUSHING	2
3	17G137	WORM GEAR 36T	1
4	YWLO12005	WASHER LOCK, 3/8	8
5	YBHH12035	BOLT HEX, 3/8 X 1-1/4 G5	2
6	17G107	LOWER GEARBOX HOUSING	1
7	17G139	CAP	1
8	17G132	SQUARE KEY	1
9	17G135	SNAP RING	1
10	17G136	OUTPUT SHAFT	1
11	5B9	WOODRUFF KEY	2
12	YNHX12005	NUT HEX, 3/8 G2	2
13	17G140	STUD	1
14	17G99	UPPER GEARBOX HOUSING	1
15	17G108A	INPUT SHAFT	1
16	17G111	BRONZE BUSHING	1
17	17G110	BEVEL GEAR 16T	1
18	G18	TAPER BEARING	2
19	G55	INTERNAL SNAP RING	3
20	18VB25	RACE	2
21	G68	CAP	1
22	17G116	SQUARE KEY	1
23	17G58	VENT CAP	1
24	12V62	HEAVY DUTY EXTERNAL SNAP RING	1
25	23N288	PIPE NIPPLE	1
26	YWFL24005	WASHER FLAT, 3/4	1
27	17G104	OUTPUT SHAFT	1
28	17G101	BEVEL GEAR 22T	1
29	17G102	RACE	2
30	17G103	TAPER BEARING	2
31	G65	PIPE PLUG, 3/8 NPT	1
32	17G105	SEAL	1
33	17G106	NUT HEX, 1-1/2	1
34	YBHH08090	BOLT HEX, 1/4 X 3 G2	1
35	YNHX08007	HEX NUT, 1/4 G5	1
36	17G125	HIGH SPEED SHIFTER YOKE	1
37	17G129	BEATER SHIFTER YOKE	1
38	17G121	SEAL	2
39	17G122	TUBE	1





FIGURE 11

GEARBOX

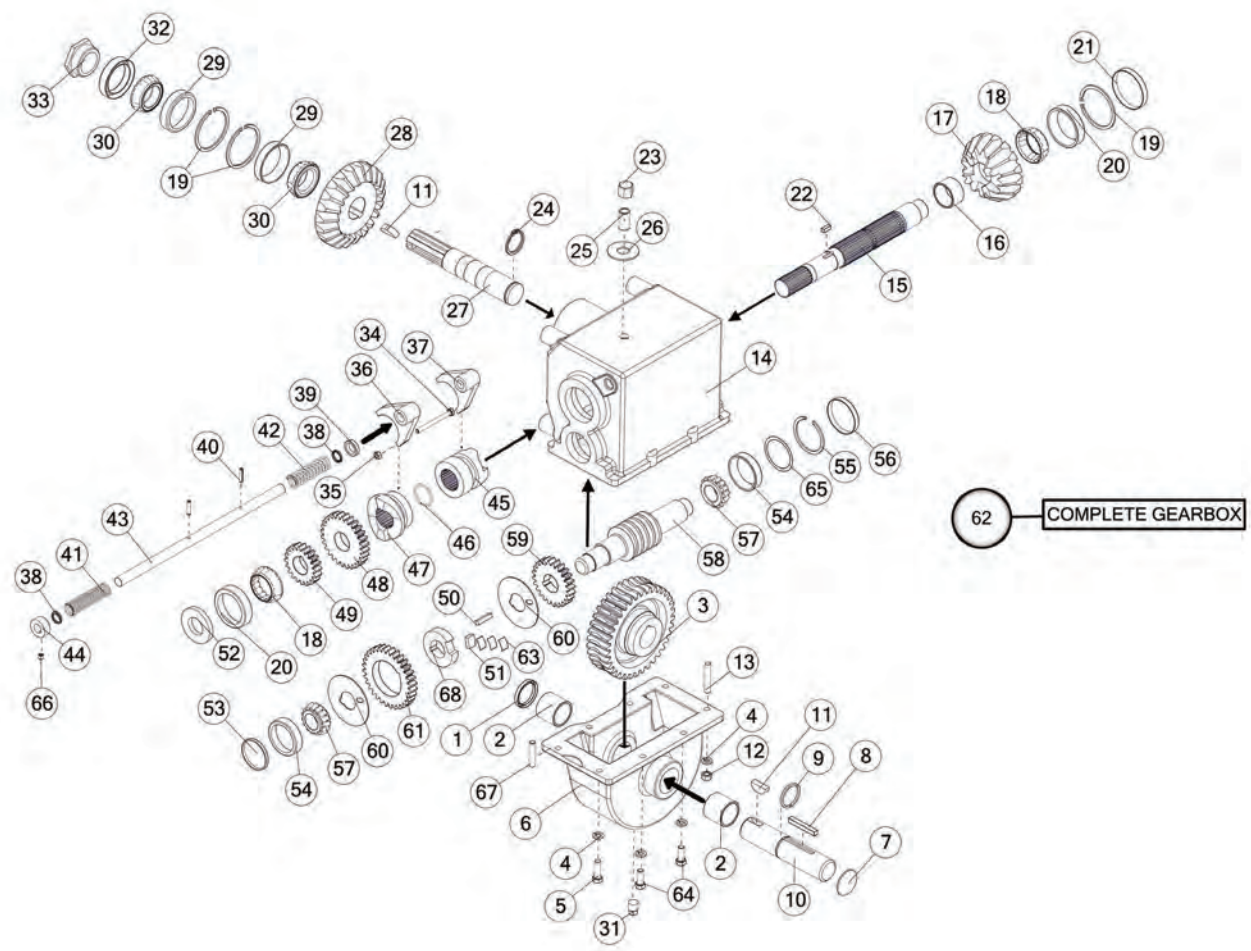




FIGURE 11

GEARBOX

REF #	PART #	DESCRIPTION	QTY
40	17G123	ROLL PIN	2
41	17G128	SPRING	1
42	17G130	SPRING	1
43	17G131	SHIFTER ROD	1
44	17G171	LOCK COLLAR, 1-1/4	1
45	17G109	BEATER CLUTCH	1
46	17G169A	SNAP RING	1
47	17G119	HIGH SPEED CLUTCH	1
48	17G118	GEAR 28T	1
49	17G115	LOW SPEED GEAR	1
50	S135	SQAURE KEY	1
51	17G124	CLUTCH DOG	1
52	S136	SEAL	1
53	17G100	CAP	1
54	3G18	RACE	2
55	3G19	INTERNAL SNAP RING	1
56	G90	CAP	1
57	L3G24	TAPER BEARING	2
58	17G120	SHAFT	1
59	17G117	HIGH SPEED GEAR	1
60	17G112	WASH FLAT	2
61	17G113	LOW SPEED GEAR	1
62	17G142	COMPLETE GEARBOX	1
63	17G126	DOG SPRING	3
64	YBHH12010	BOLT HEX, 3/8 X 1 G5	4
65	G92	STAINLESS SHIM	1
66	YSKP10015	SET SCREW	1
67	17G138	STUD	1
68	17G114	LOW SPEED CLUTCH	1



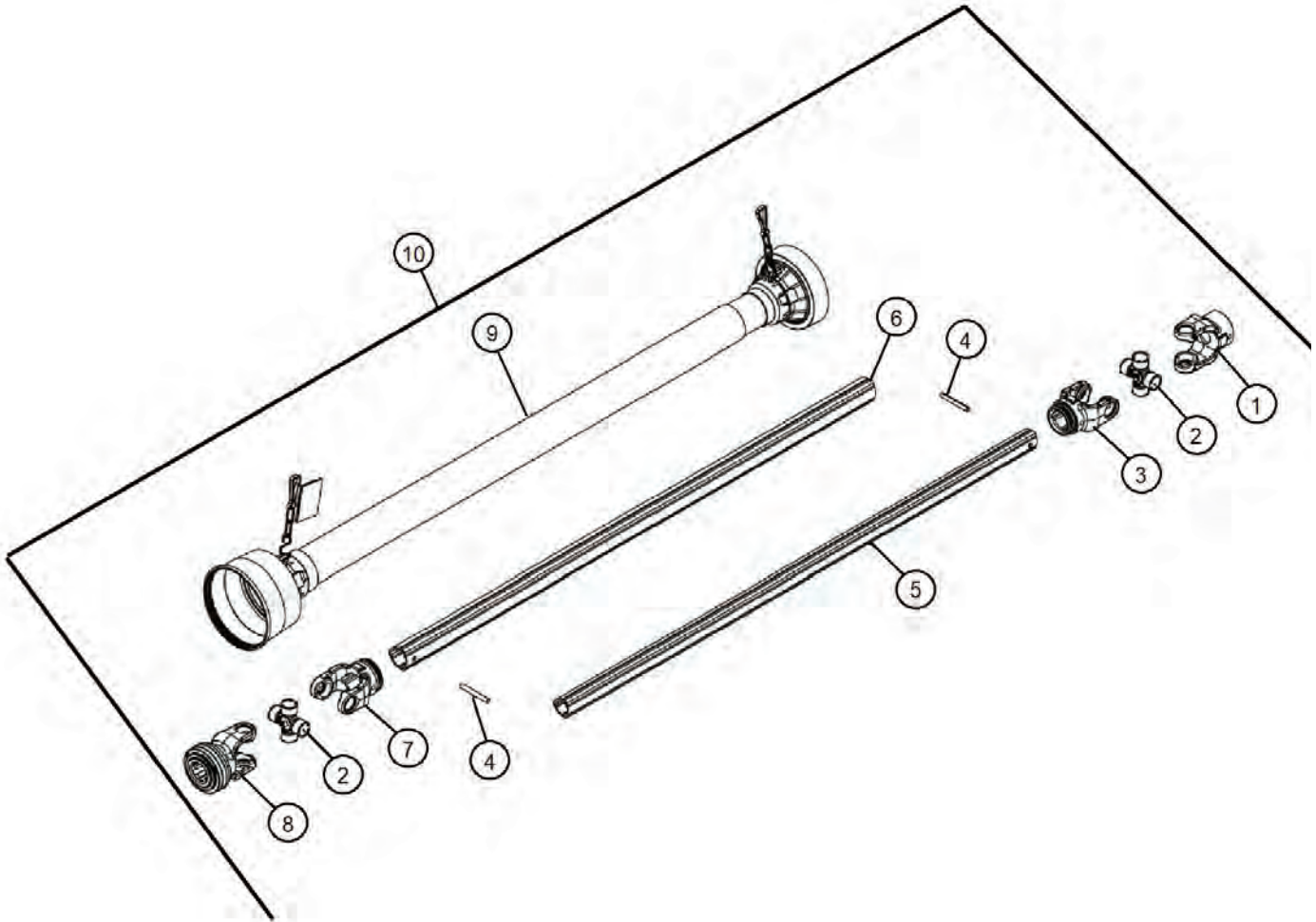
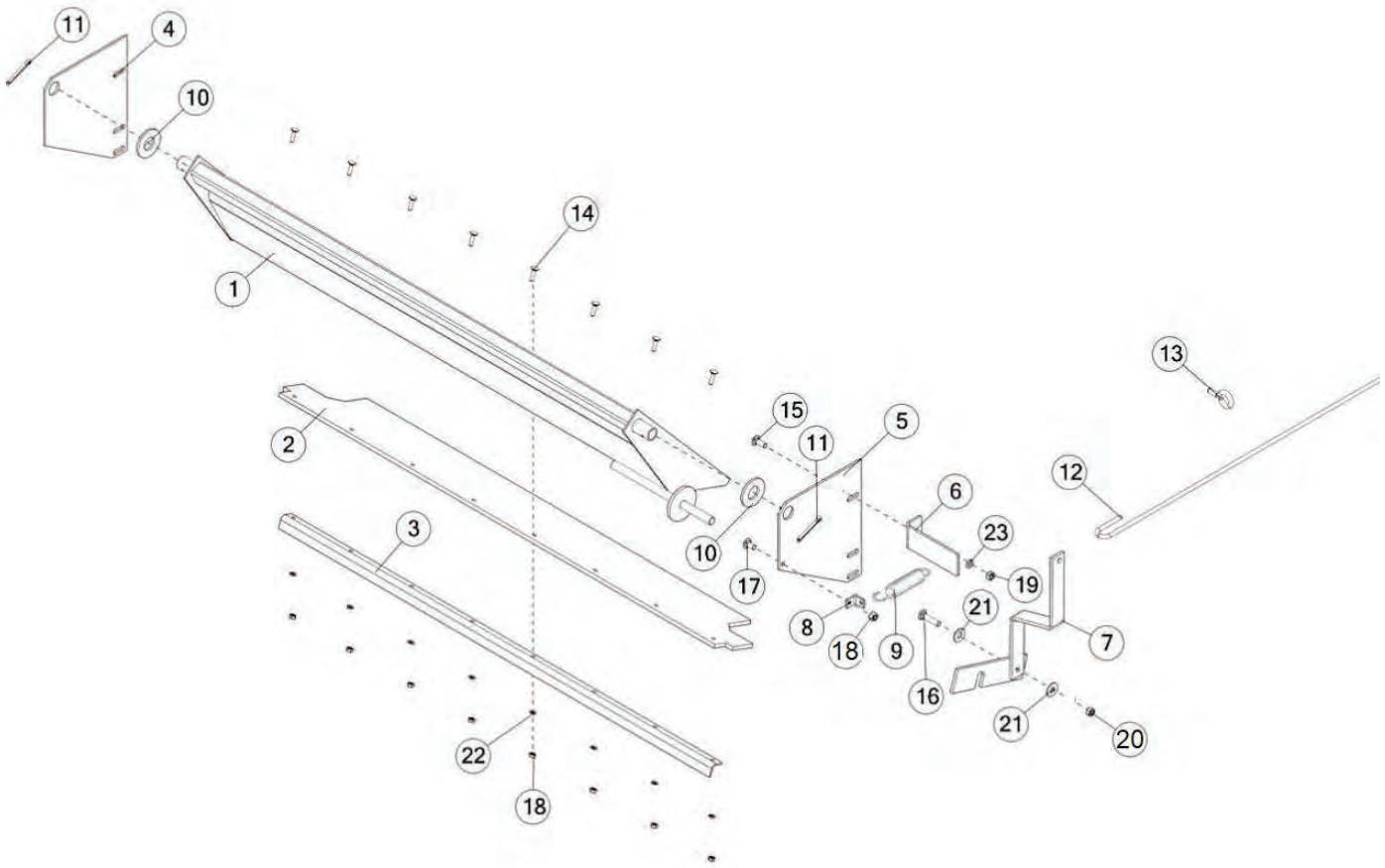




FIGURE 13
OPTIONAL REAR PAN (MSO3C)







Manufactured By:

H&S MANUFACTURING CO., INC.

2608 S. HUME AVE. MARSHFIELD, WI 54449

(715) 387-3414 | hsmfgco.com

